







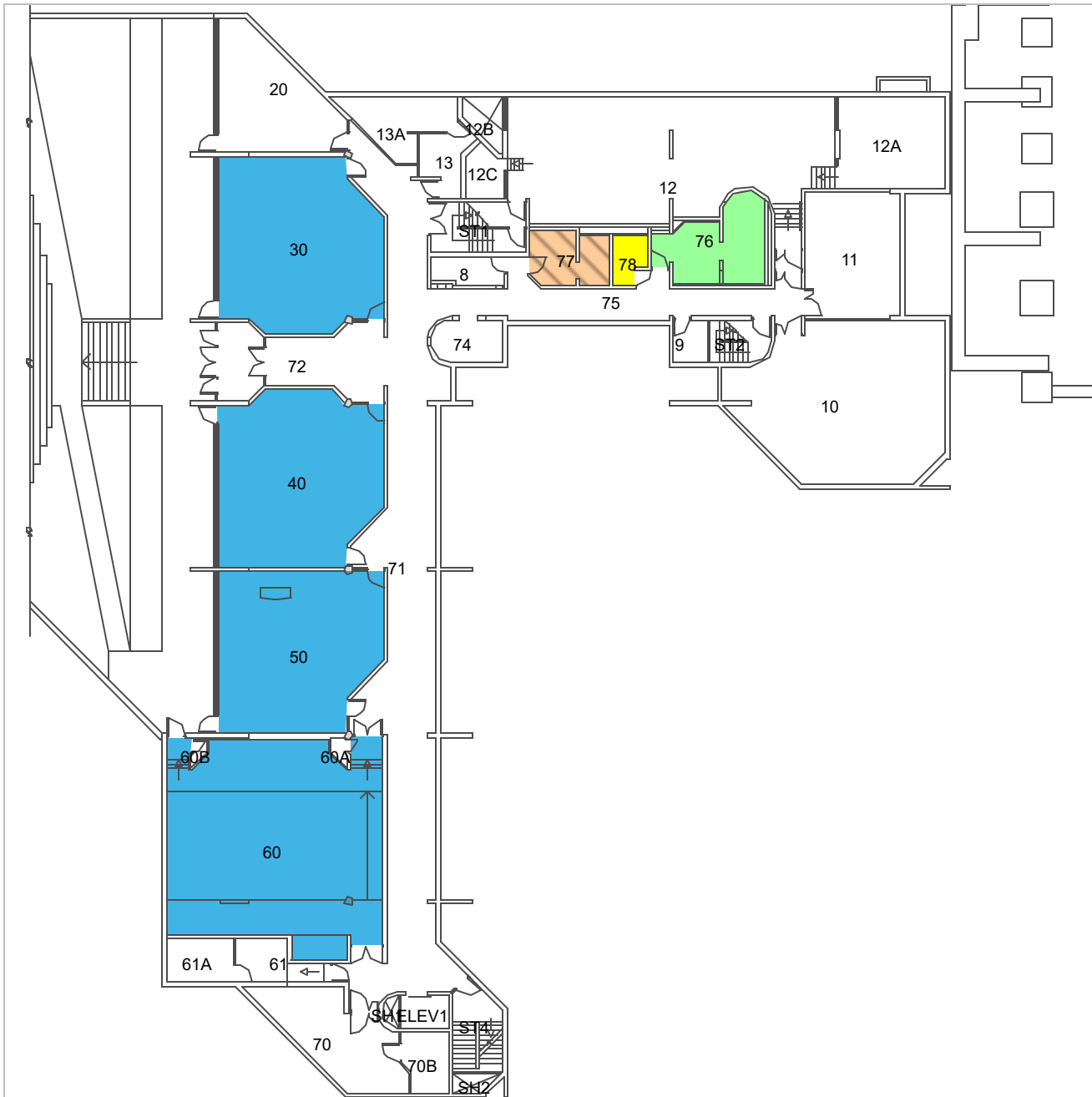
Printed On: March 03, 2025

## Food, Nutrition and Health Building ( 449 ) - Floor: -1

### Washrooms and Classrooms

-  Clsrm Fixed Tablets
-  Clsrm Move T & C
-  Clsrm Move Tablets
-  Multiple Occupant Washroom - Men
-  Multiple Occupant Washroom - Woman - Accessible
-  Single Occupant Washroom - All Gender - Accessible

Washrooms labeled as all gender and/or accessible are currently under review by UBC Facilities for alignment with UBC's draft design guidelines for inclusive washrooms and the BC Building Code.






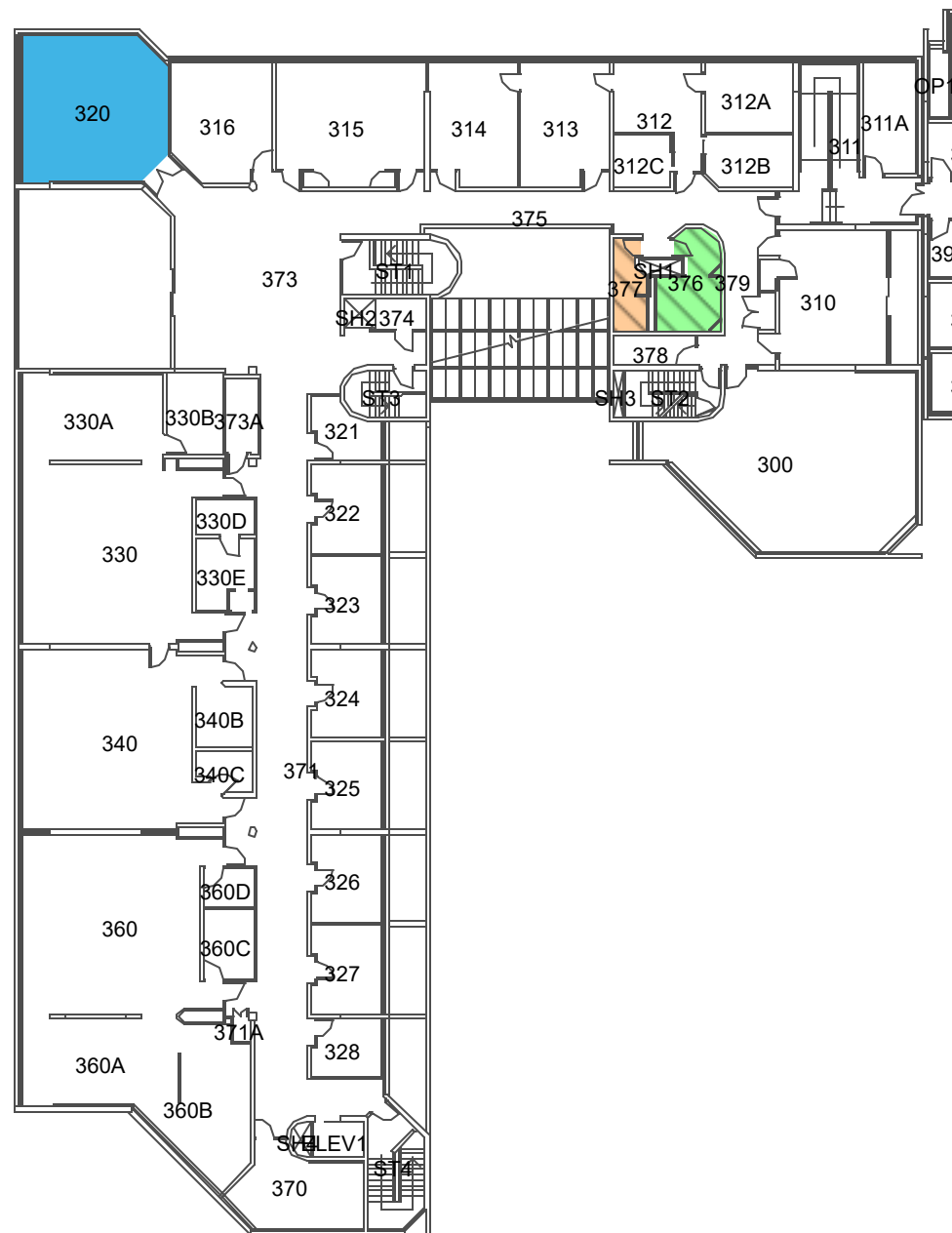


Printed On: March 10, 2025

## Food, Nutrition and Health Building ( 449 ) - Floor: 3

### Washrooms and Classrooms

-  Clsm Move Tablets
-  Multiple Occupant Washroom - Men
-  Multiple Occupant Washroom - Women



Washrooms labeled as all gender and/or accessible are currently under review by UBC Facilities for alignment with UBC's draft design guidelines for inclusive washrooms and the BC Building Code.