

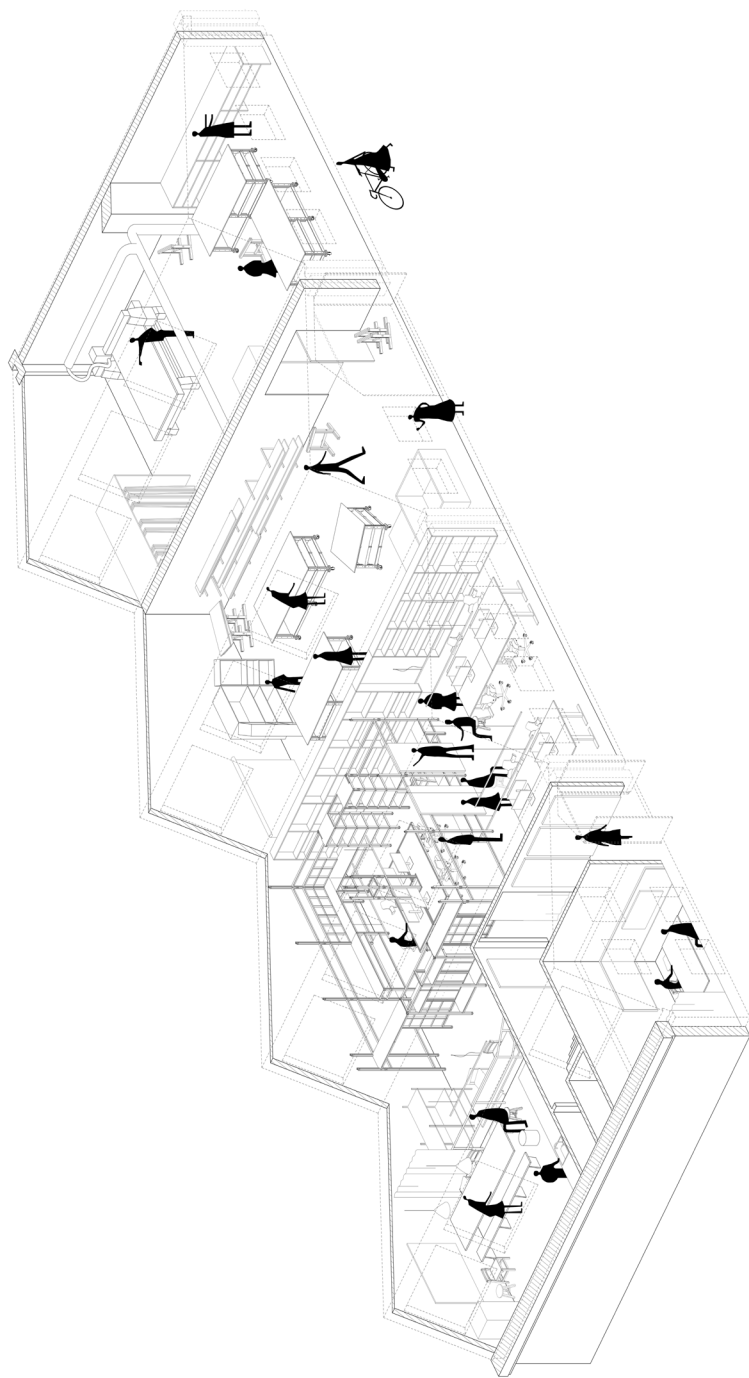
Archival Studies

# Culture

---

2025

---



We build spaces  
that can grow, be  
reimagined, and  
shared







# ARCHIVAL STUDIES

Established in 2018, Archival Studies is a Copenhagen-based design studio focused on adaptive architecture and its spaces.

We operate from our own hybrid studio and workshop, enabling us to prototype in-house in order to push the boundaries of conventional building standards and artistic architectural practice.

Here we are designing not only spaces but inventory, lighting solutions, and structural systems. All with a focus on modularity and circularity.

We define ourselves through flexibility: in how our work functions, in how we collaborate closely with our clients, and in how we bring projects to completion.





## OUR ROLE IN THE CULTURAL FIELD?

How can we, together with cultural institutions, approach the green transition?

How can adaptive design act as a driver for minimizing waste and improve inclusion?

Cultural institutions increasingly carry the responsibility to engage with the green transition, even if not legally required. Funders and sponsors demand clear strategies, encouraging institutions to embed sustainability and accountability into their work.

For a young design studio like us, these values are part of our foundation.

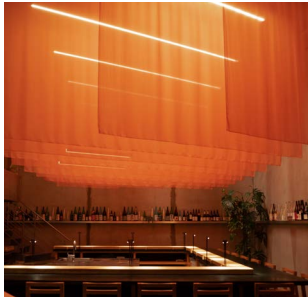
Exhibitions and cultural spaces, with their temporary and small-scale nature, offer ideal laboratories for testing sustainable solutions. Beyond reducing emissions, they can model innovative approaches, inspire audiences, and set new standards. By embracing responsibility and openness, cultural institutions can drive meaningful change and offer real depth to sustainability and inclusion.





# SELECTED PROJECTS

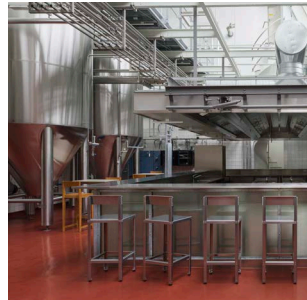
## HOSPITALITY



Kōnā  
Restaurant, 2020

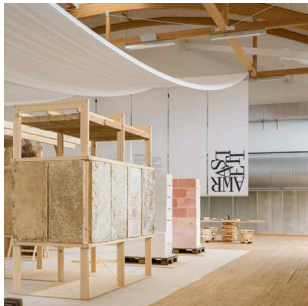


Gasoline Grill  
Restaurant, 2021

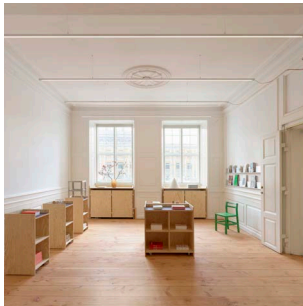


Åben Kødbyen, Furnishing design  
Project by Pihlmann Architects, 2022

## CULTURAL



Reset Materials  
Exhibition Design, 2023



Gammel Strand Kiosk  
Interior, 2024



SMK Welcome Desk, Entrance hall  
Interior, ongoing

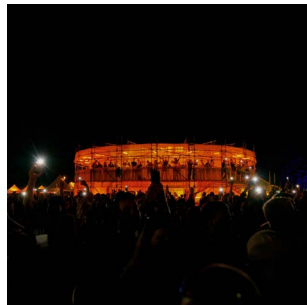
## COMMUNITY



Spor10  
Interior, Social activation, 2023



Vores Sted  
Fælles tegnestue, 2025



Syd for Solen Festival  
Pavilion and bar, 2024+25

## WORK



Refshaleøen Ejendomsselskab, Office  
Furnishing design, 2021

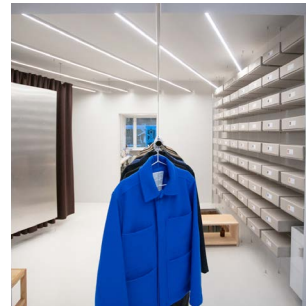


Playdead, Office  
Interior, ongoing



Trifolium, Office  
Interior, ongoing

## RETAIL



Arkitem Kopenhagen, Retail and workshop  
Interior

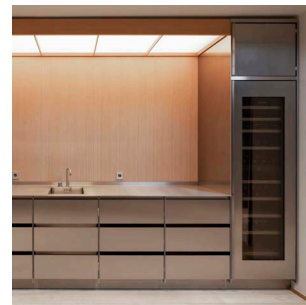


Rockfon, Display System  
Repurposable display system, 2023

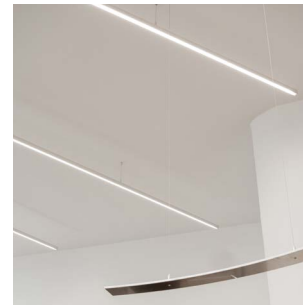


D Line, Display System  
Repurposable display system, 2024

## SYSTEMS AND PRODUCTS



Standard Kitchen System  
2024



Linear Light System  
2022



Alu Furniture System  
2023



## EXHIBITION 05 \_ RESET MATERIALS

Archival Studies was commissioned to plan and execute the design of the exhibition Reset Materials. The layout of the space was intentionally designed as a cityscape, mirroring the applications of the featured pieces within the architectural realm. Highways, streets, and pathways wind through the exhibition's high-rises, monuments, arcs, and squares, enabling close engagement with the displayed items and offering a layered landscape that as a window into a potential future.

A central element of the design concept was minimizing waste. All materials were maintained at their standard sizes, avoiding the need for cutting or modification. This approach ensured that all exhibition materials could be repurposed once the show concluded.

PROJECT TYPE: Exhibition Design, Production, Installation  
CLIENT: Akademisk Arkitektforening, Copenhagen Contemporary  
COLLABORATION: Curator Chrissie Muhr, Graphical design Studio Atlant  
LOCATION: Refshaleøen, Copenhagen, DK  
DATE: 2023  
PHOTOGRAPHY: Hampus Berndtson







Archival Studies



@archival\_studies

archivalstudies.net







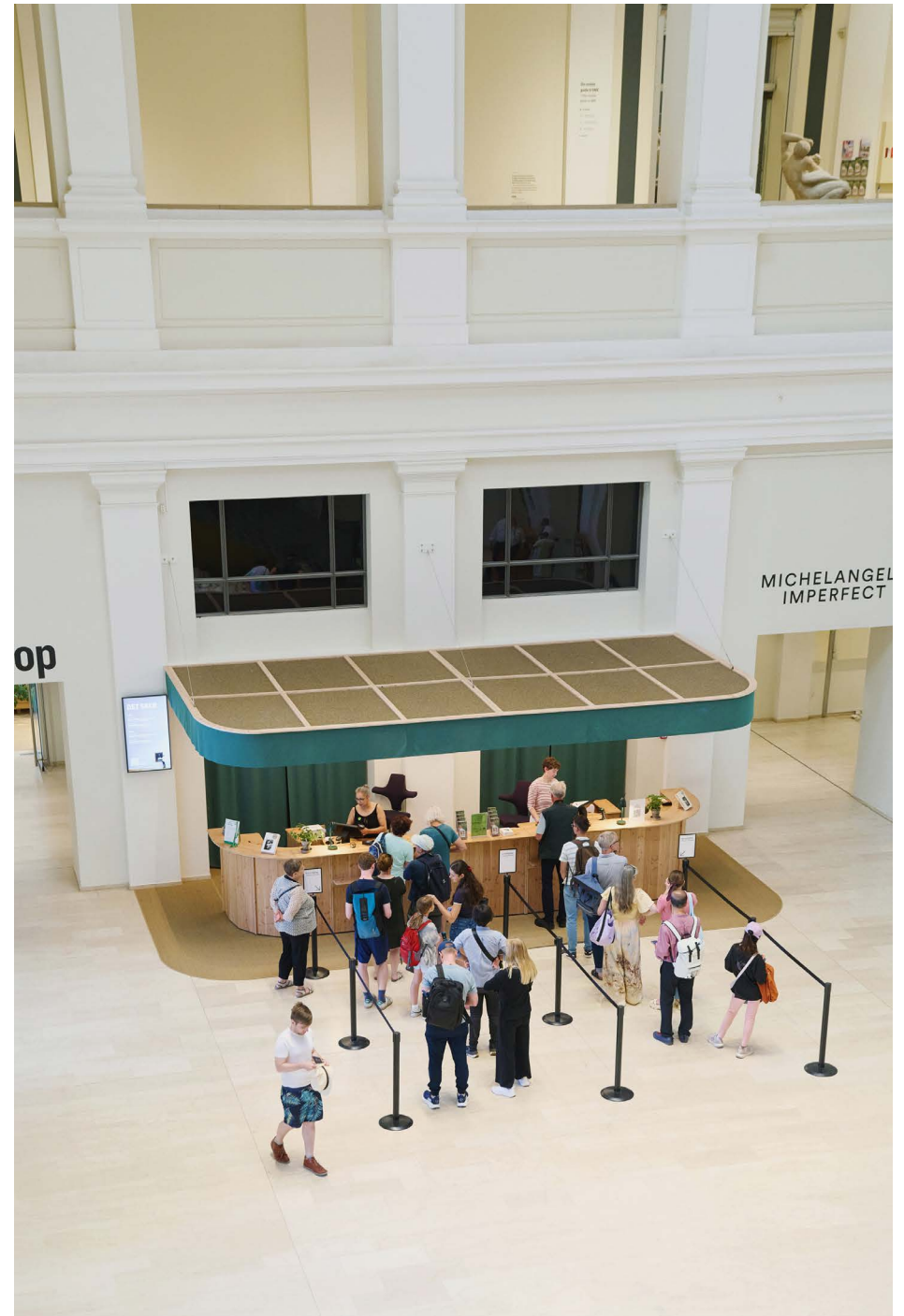
## INTERIOR 15 \_ SMK ENTRANCE HALL

Positioned at the heart of SMK's grand entrance, the welcome desk serves both as a ticket counter and a visual guide for visitors.

The warm, understated counter, combined with a carpeted floor, a calming textile backdrop and a eelgrass acoustic canopy introduces biogene textures and tactility to the otherwise blank desaturated space. This design offers a welcoming, human-scale point of access within the museum's vast entrance hall.

The central counter consists of five flexible modules. Castors on each module allow easy repositioning, enabling the layout to evolve with SMK's needs. Panels are not glued but attached with screws, making repairs, customization, and reuse possible.

PROJECT TYPE: Spatial Design, inventory, production, installation  
CLIENT: Statens Museum for Kunst  
LOCATION: Copenhagen, DK  
DATE: 2024 - Ongoing  
PHOTOGRAPHY: Niklas Adrian Vindelev



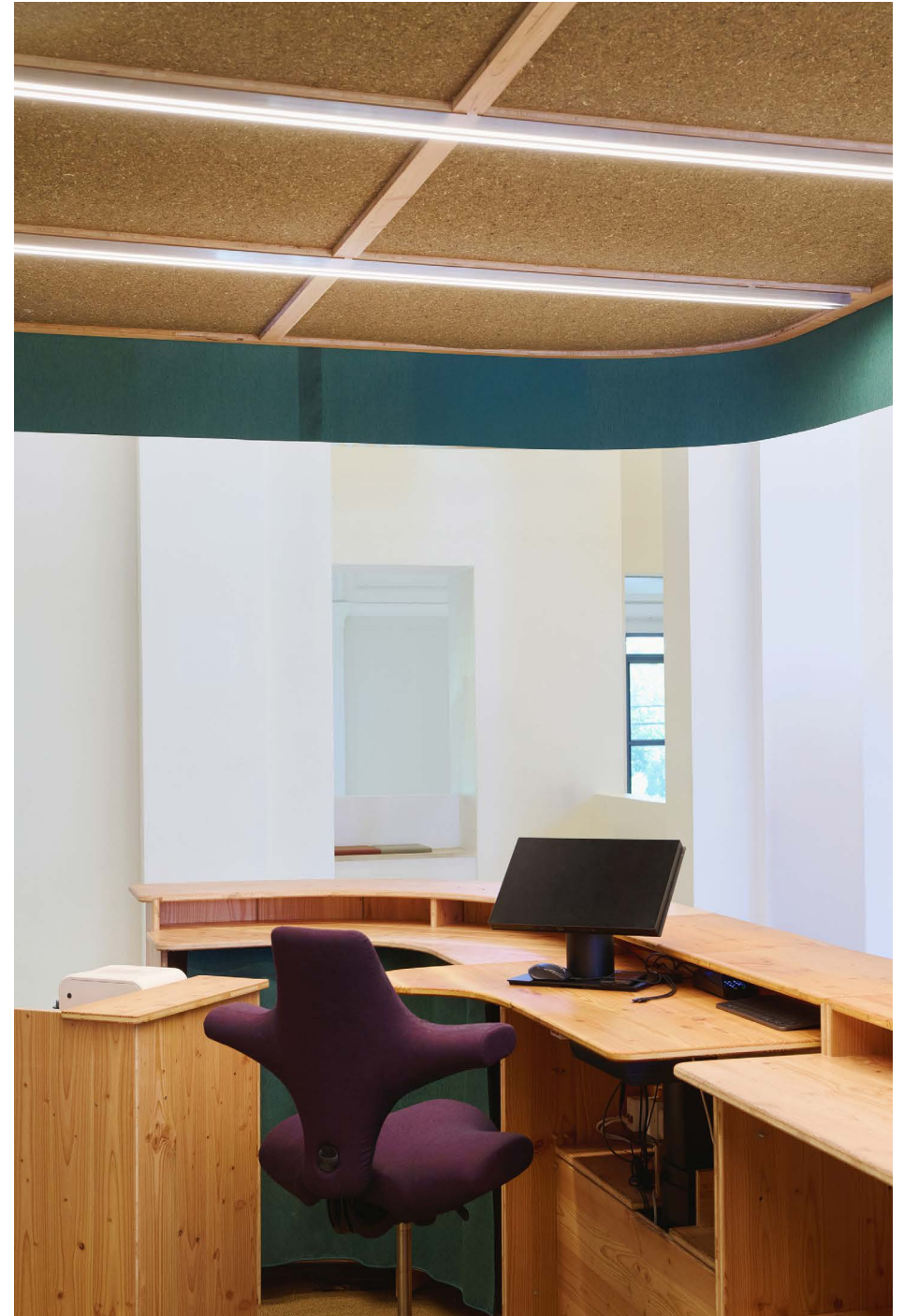








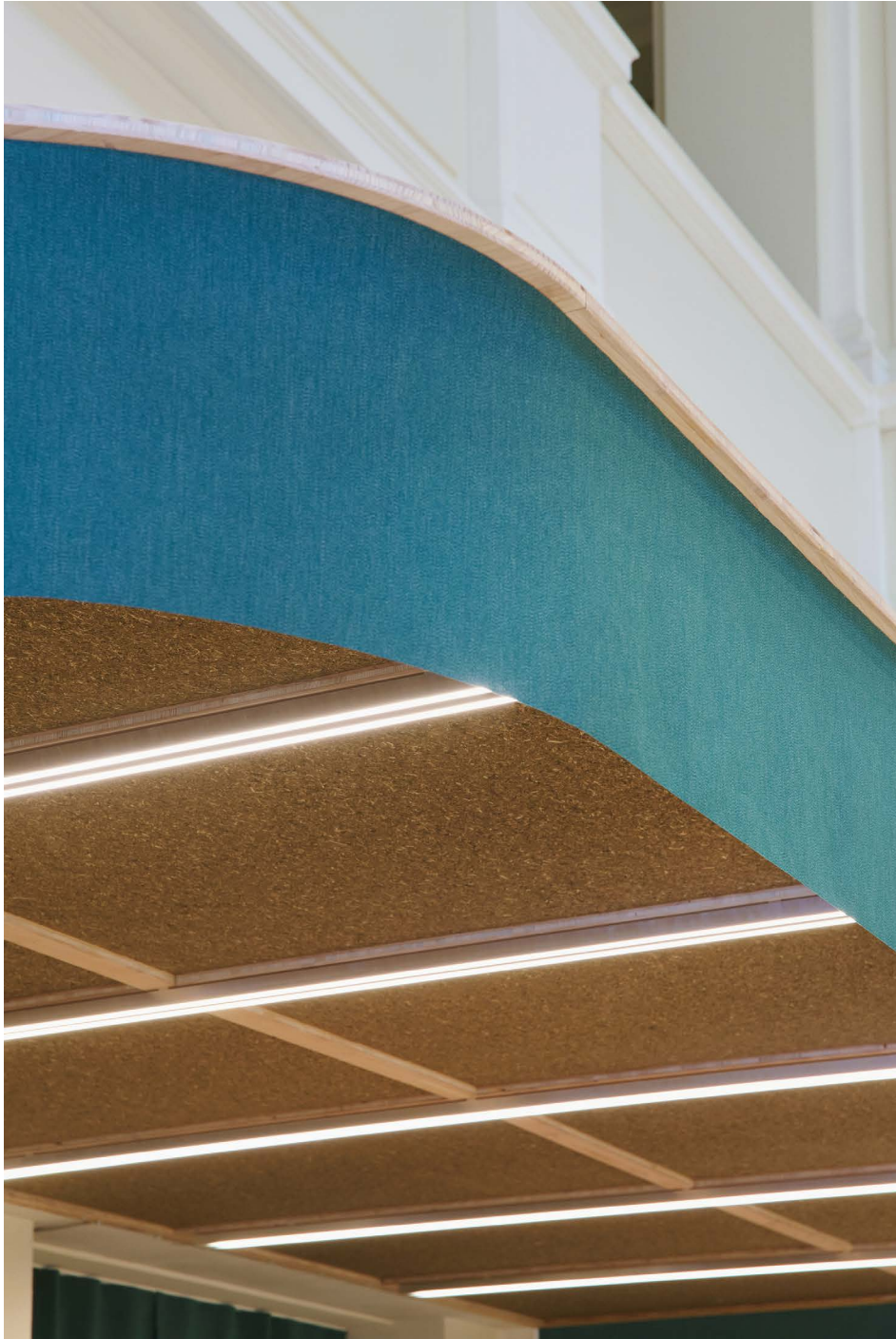
Archival Studies



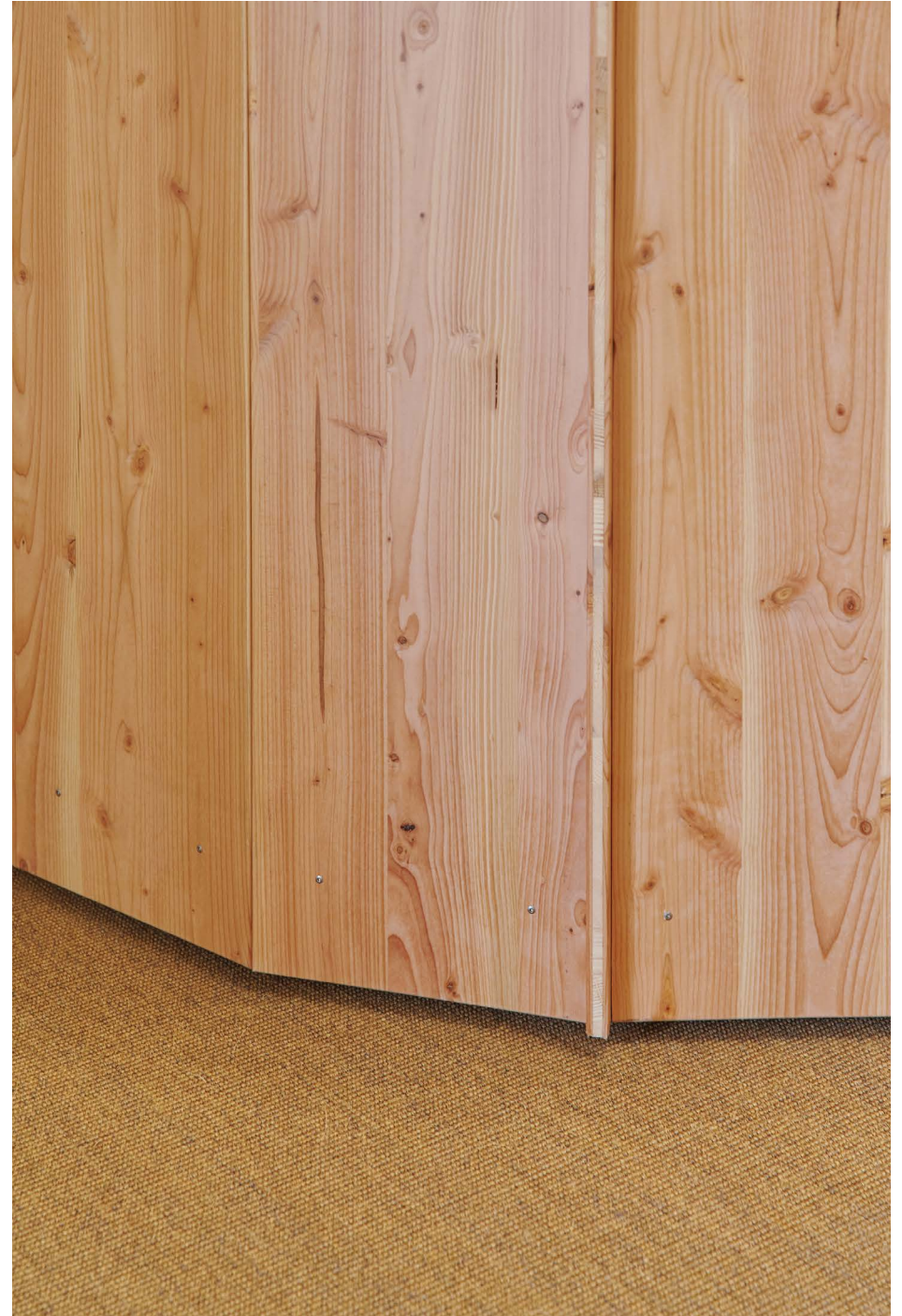
@archival\_studies

archivalstudies.net





Archival Studies



@archival\_studies

archivalstudies.net





Archival Studies



@archival\_studies

archivalstudies.net





Archival Studies



@archival\_studies

archivalstudies.net



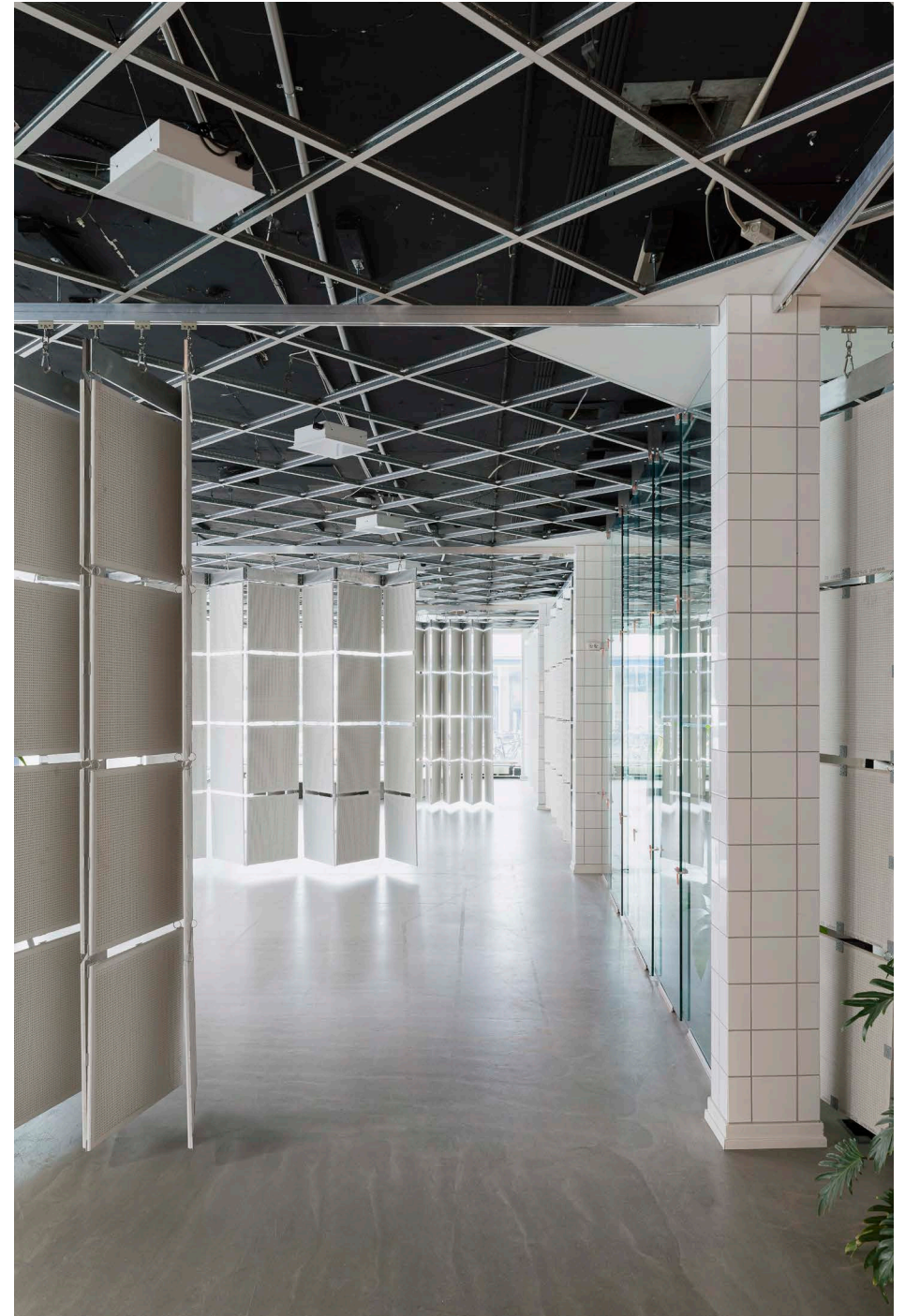
## INTERIOR 05 \_ART HUB

Every element must be reused. Nothing is disposed but revitalized through the rewriting of function and appearance.

The transformation of Art Hub Copenhagen points towards a general path for how recycling can be rethought in architecture. When resources are not consumed, but regenerated into value-creating elements, recycling is no longer a necessary evil, but the very catalyst of form and intention.

Collaboration with Pihlmann Architects

PROJECT TYPE: Office Interior  
CLIENT: Art Hub Copenhagen  
LOCATION: Copenhagen, DK  
DATE: 2020  
PHOTOGRAPHY: Hampus Berndtson  
COLLABORATORS: Pihlmann Architects











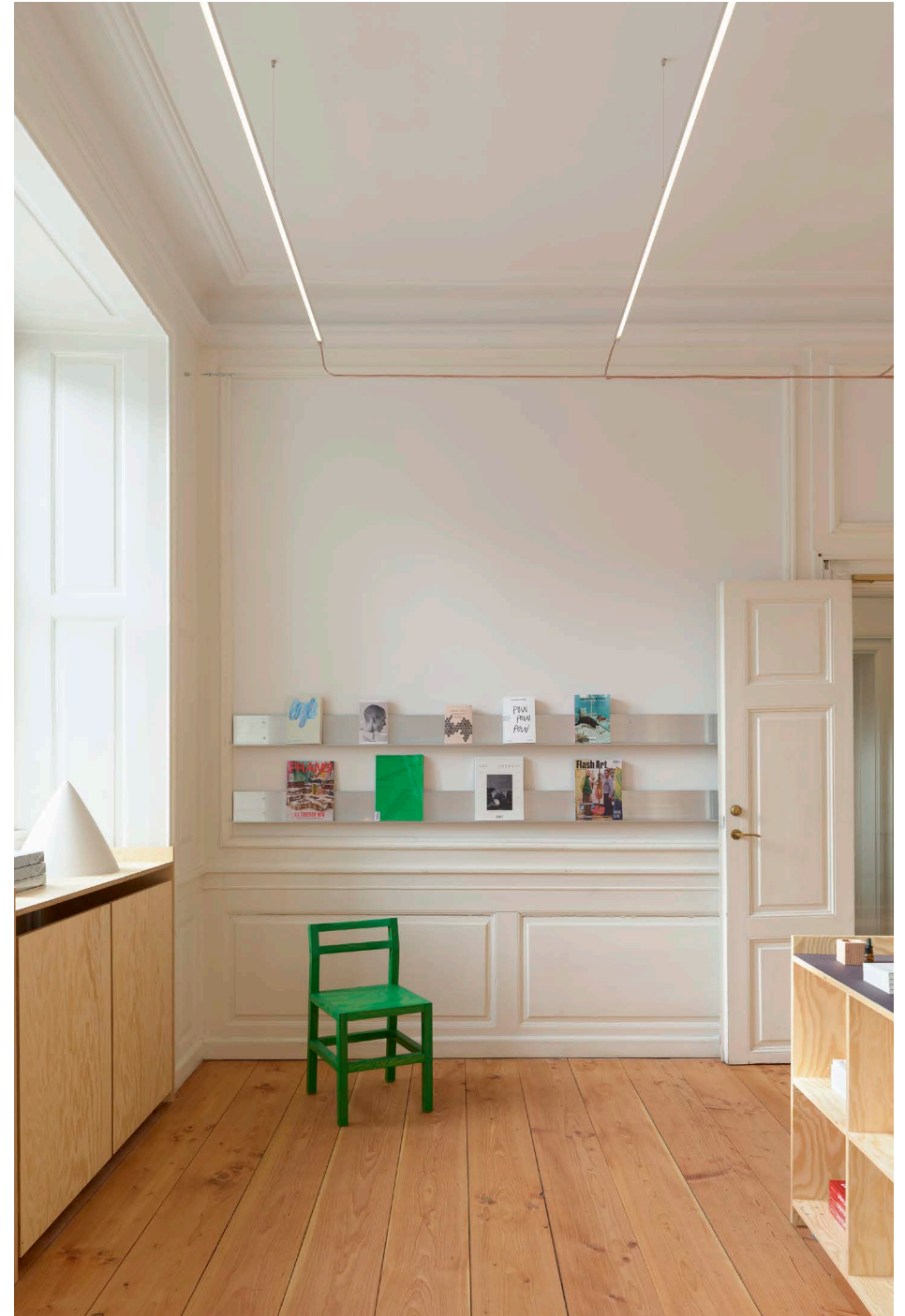


## INTERIOR 14 \_ GAMMEL STRAND PUBLIC AREA

We began by reimagining the entrance, shop, and ticket sales area, focusing on restoring the space's original character while enhancing its functions. By working with what was already there, we aimed to create a more intuitive and open experience for visitors.

Layers of added interiors were removed, allowing the classical architecture to breathe once again. The restored wooden floorboards and exposed walls reveal the building's history while making room for new possibilities. The result is an inviting space - one that respects the past while offering the art center a dynamic platform to evolve as a vibrant cultural hub.

PROJECT TYPE: Retail, Interior  
CLIENT: Gammel Strand  
LOCATION: Copenhagen, DK  
DATE: 2024  
PHOTOGRAPHY: Hampus Berndtson

















## BUILDING 01 \_ VORES STED

‘Vores Sted’ (Our Place) celebrates the 25th anniversary of the Danish philanthropic foundation Realdania by providing 150 social gathering spaces free of charge to communities and associations across Denmark.

The pavilions are designed with a philosophy of fostering community while minimizing environmental impact and will be constructed primarily from recycled and biogenic materials, available in four different typologies.

The goal of the project is to provide versatile and inviting meeting places for Denmark’s self-organized communities. Designed as simple pavilions with a distinctive gabled roof, they are both recognizable and archetypal in Denmark’s built environment.

PROJECT TYPE: Building  
CLIENT: Realdania  
LOCATION: Denmark  
YEAR: 2024, ongoing  
COLLABORATORS: pihlmann architects, Cobe and ReVærk













## INVENTORY 03 \_ THORAVEJ29

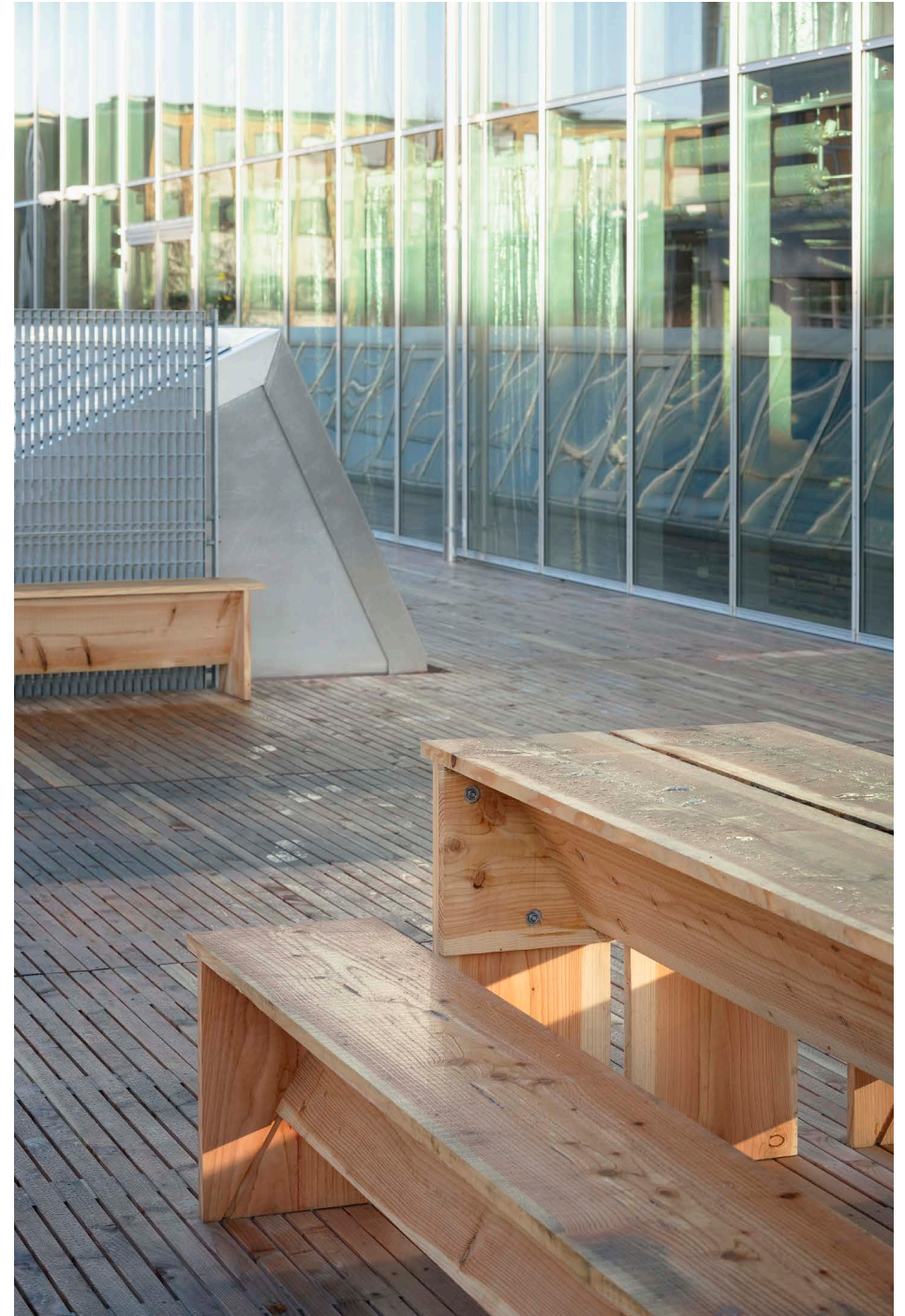
We were commissioned to develop a line of loose inventory for Bikuben Foundations community hub, Thoravej29.  
All designed and produced in - house.

For the outdoor furniture and planterboxes were realized in 'green' undried wood to reduce energy consumption while unlocking new aesthetic possibilities that stay closer to the raw state of the material.

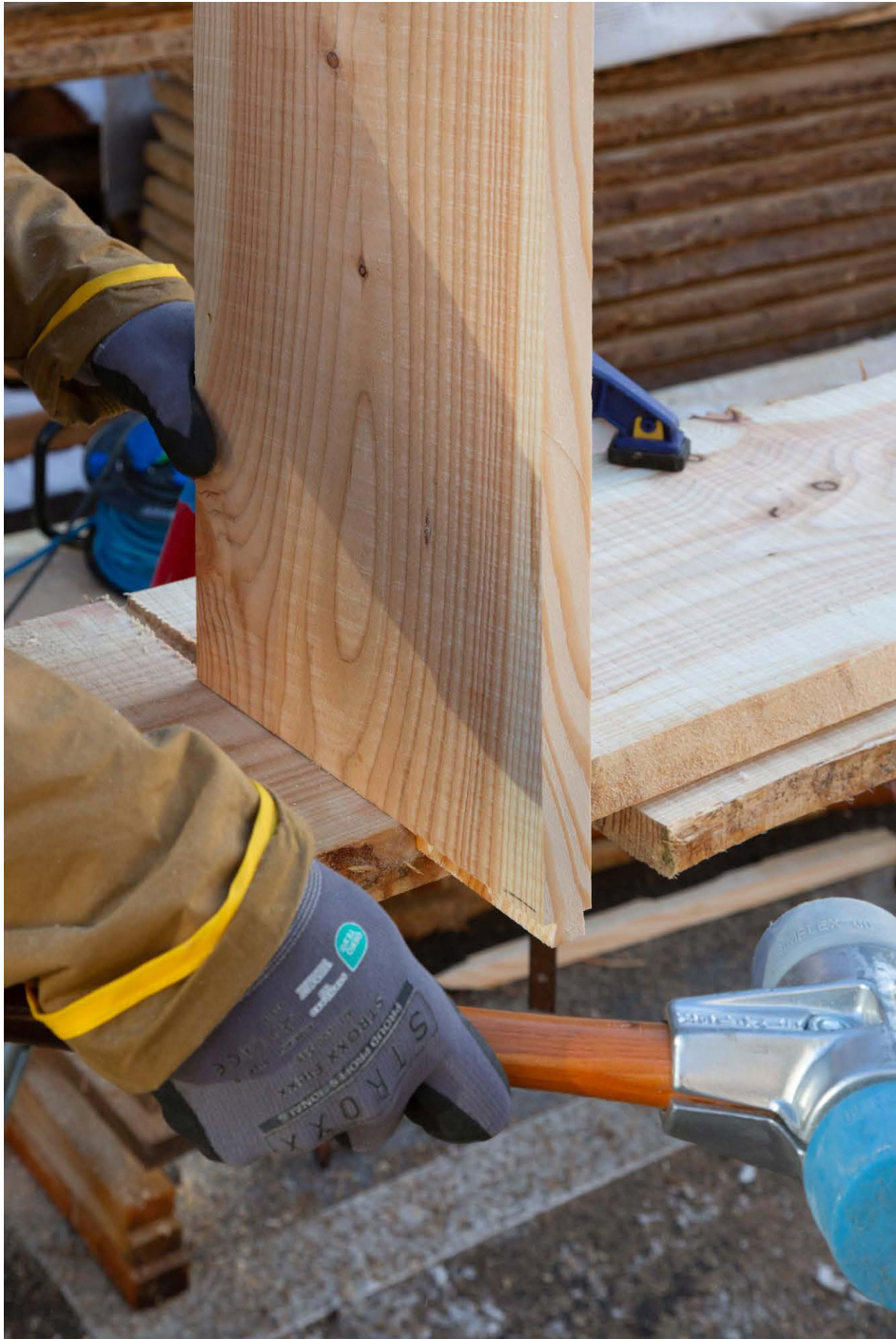
For the high chairs around the interior of the building we intentionally included knots, wind cracks, sapwood, and planer marks.

For their workshops, we designed a fully disassemblable workshop table, which we also open-sourced.

PROJECT TYPE: Research, inventory, production  
CLIENT: Bikuben Foundation  
LOCATION: Thoravej 29, Copenhagen, DK  
DATE: 2025  
PHOTOGRAPHY: Hampus Berndtson







Archival Studies



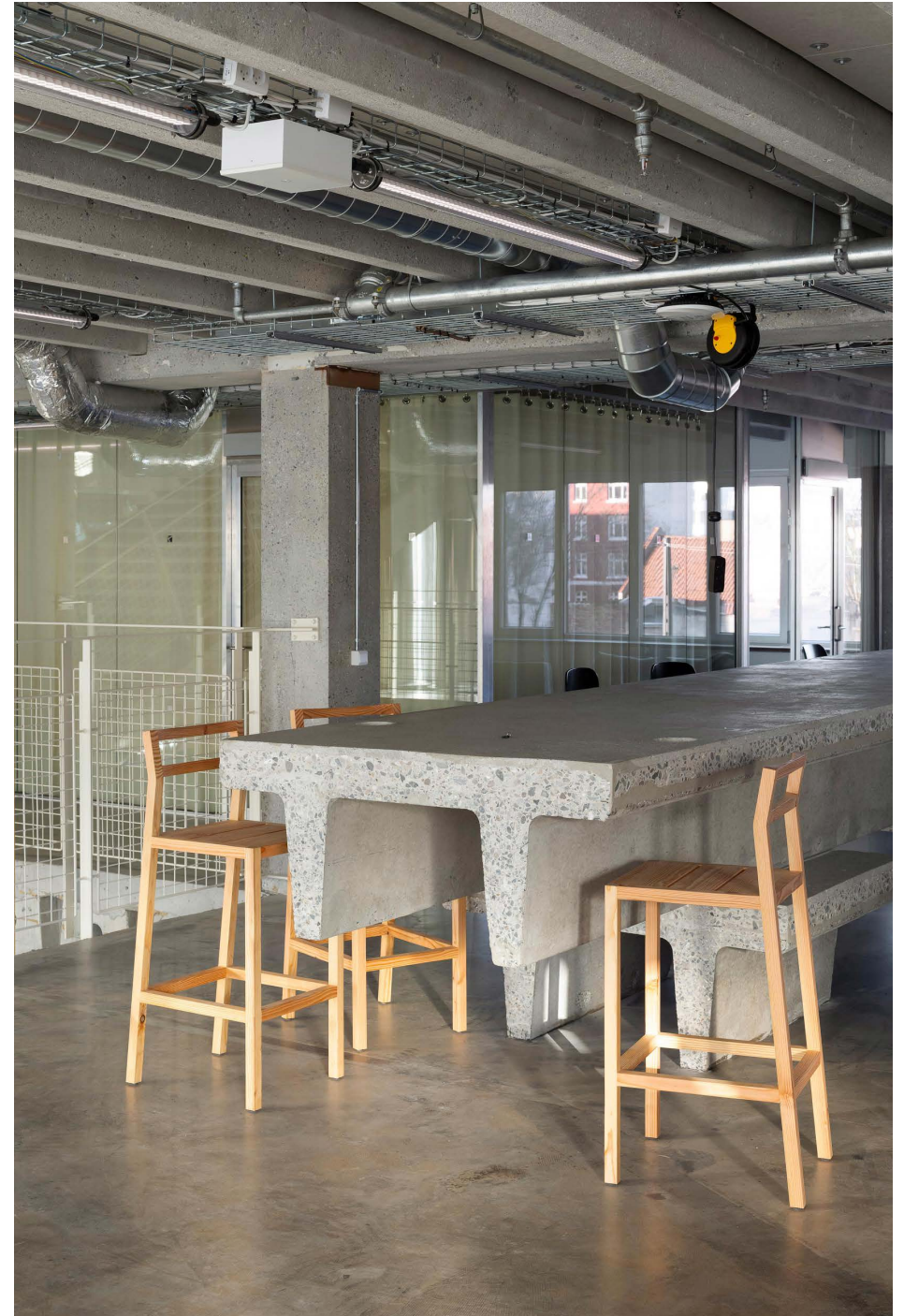
@archival\_studies

archivalstudies.net





Archival Studies



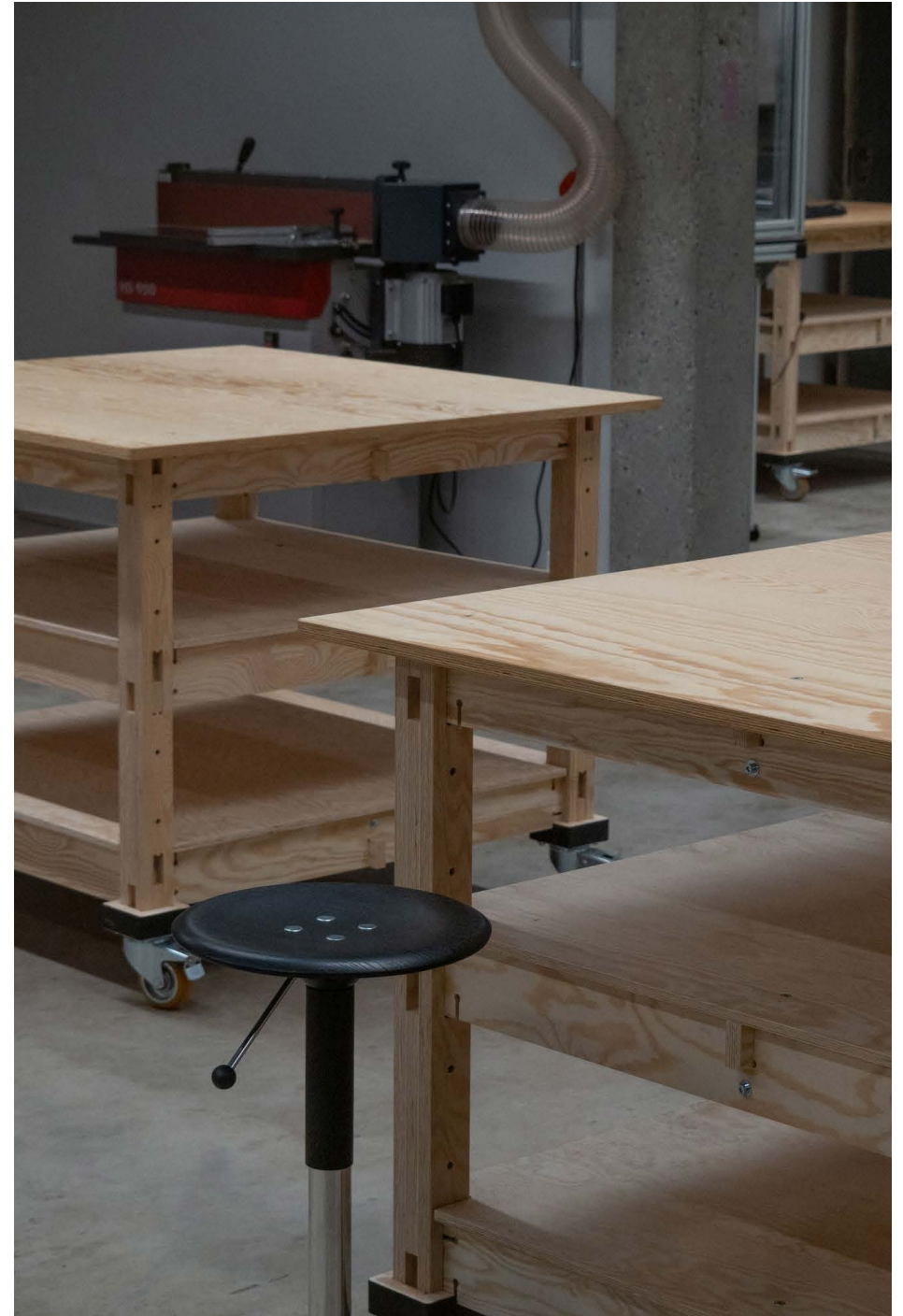
@archival\_studies

archivalstudies.net





Archival Studies



@archival\_studies

archivalstudies.net

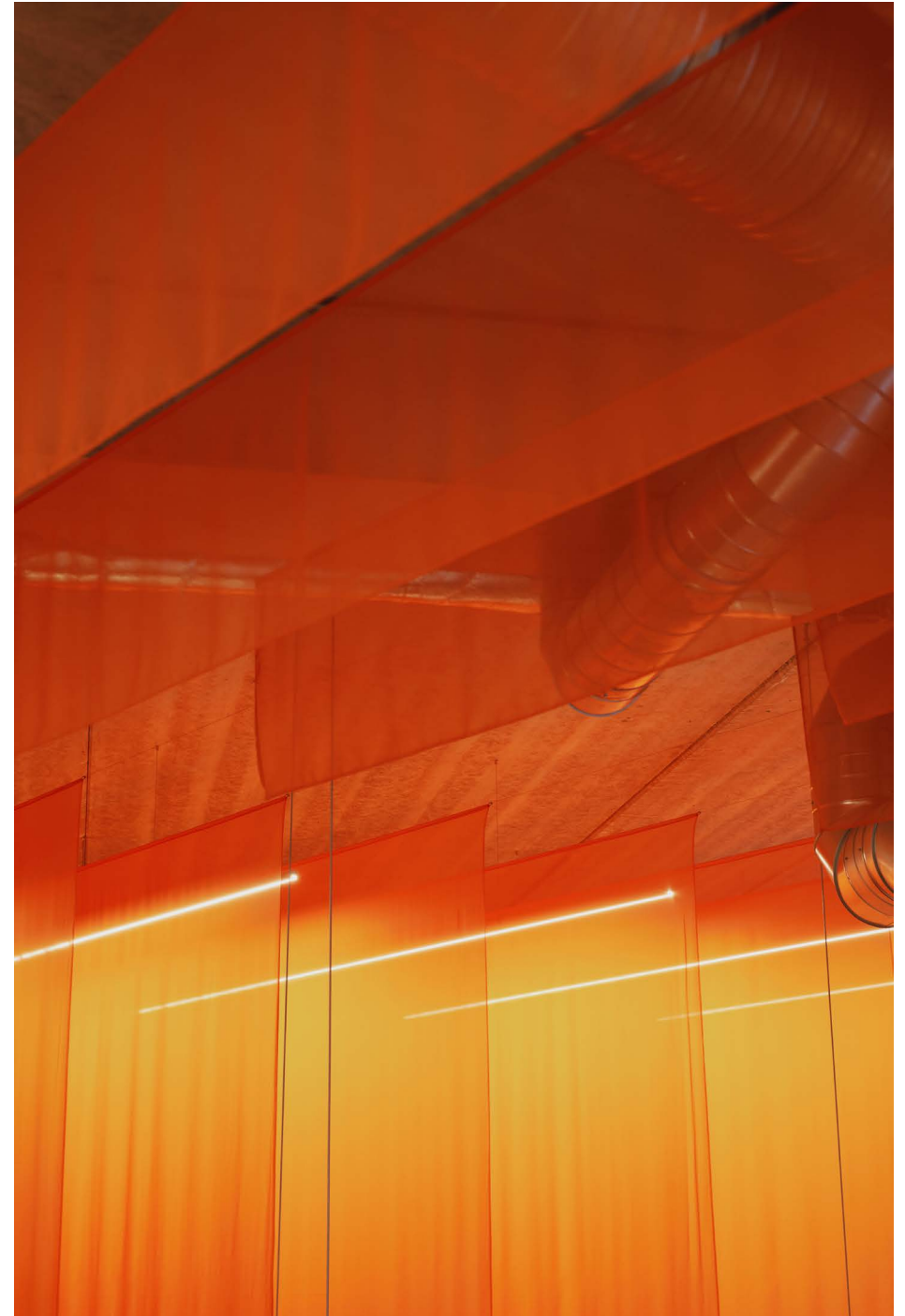


## INTERIOR 06 \_ KŌNĀ

Kōnā's interior unfolds in two distinct spaces. Guests first step into the intimate Izakaya, where a soft, low textile ceiling creates a relaxed atmosphere. As they descend the stairs, the space expands dramatically, revealing the Omakase Bar with its soaring height.

Suspended textiles and carefully designed lighting soften the concrete's rawness while giving the space a distinct identity. As guests move through, translucent orange textiles shift in appearance, dissolving into an atmospheric cloud of color. This interplay of light and material infuses warmth into the cool concrete, creating a space that feels both stimulating and inviting.

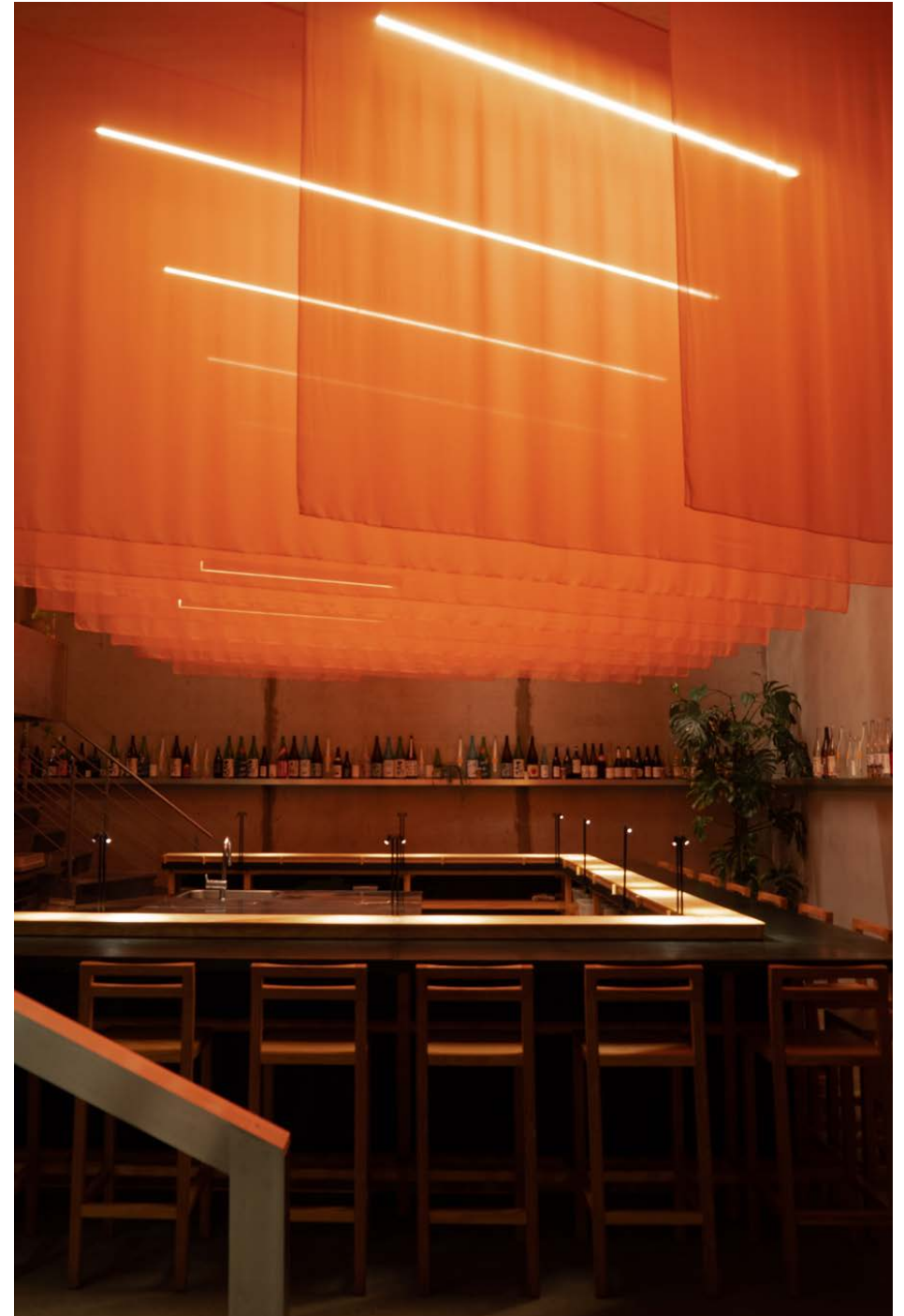
PROJECT TYPE: Restaurant Interior, production, installation  
CLIENT: Philipp Inreiter and Carlsberg Byen  
LOCATION: Copenhagen, DK  
DATE: 2020  
PHOTOGRAPHY: Niklas Adrian Vindelev / Archival Studies







Archival Studies



@archival\_studies

archivalstudies.net







## BUILDING SYSTEM \_ ROCKFON

To showcase their new range of design solutions, Rockfon's modular exhibition system was designed to frame and uplift the products on display.

The structure of CNC-milled plywood was designed for disassembly to be taken apart to travel between exhibitions. This approach aims to minimize waste between events and allows the material to gain character and charm over time. The exhibition system was first implemented at Paris' Workspace Expo in 2023, and has since been repurposed for exhibitions in Amsterdam and Malmö.

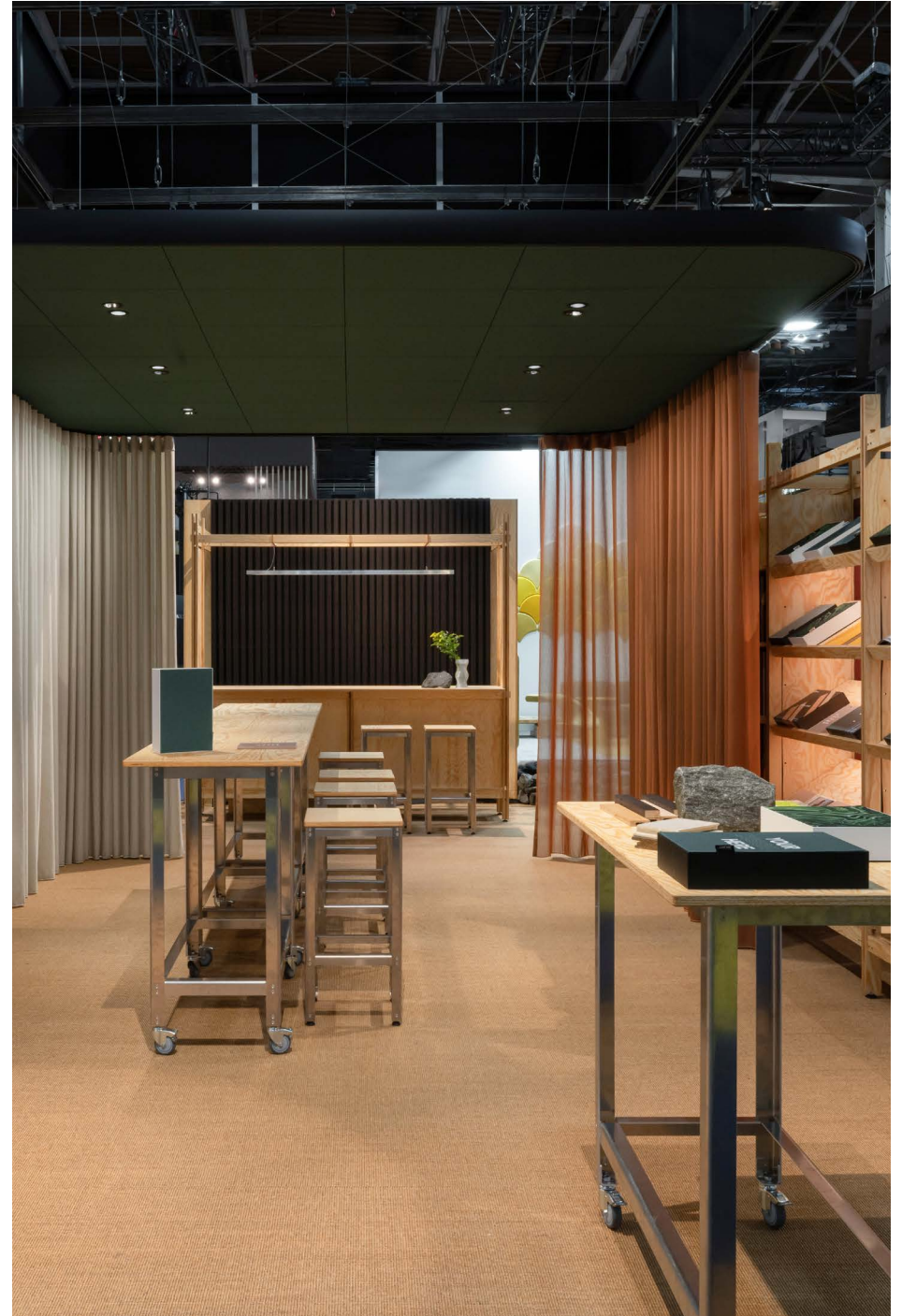
PROJECT TYPE: Modular Exhibition System  
CLIENT: Rockfon  
LOCATION: Paris (FR), Amsterdam (NL), Malmö (SE)  
DATE: 2023–2024  
PHOTOGRAPHY: Studio Brinth







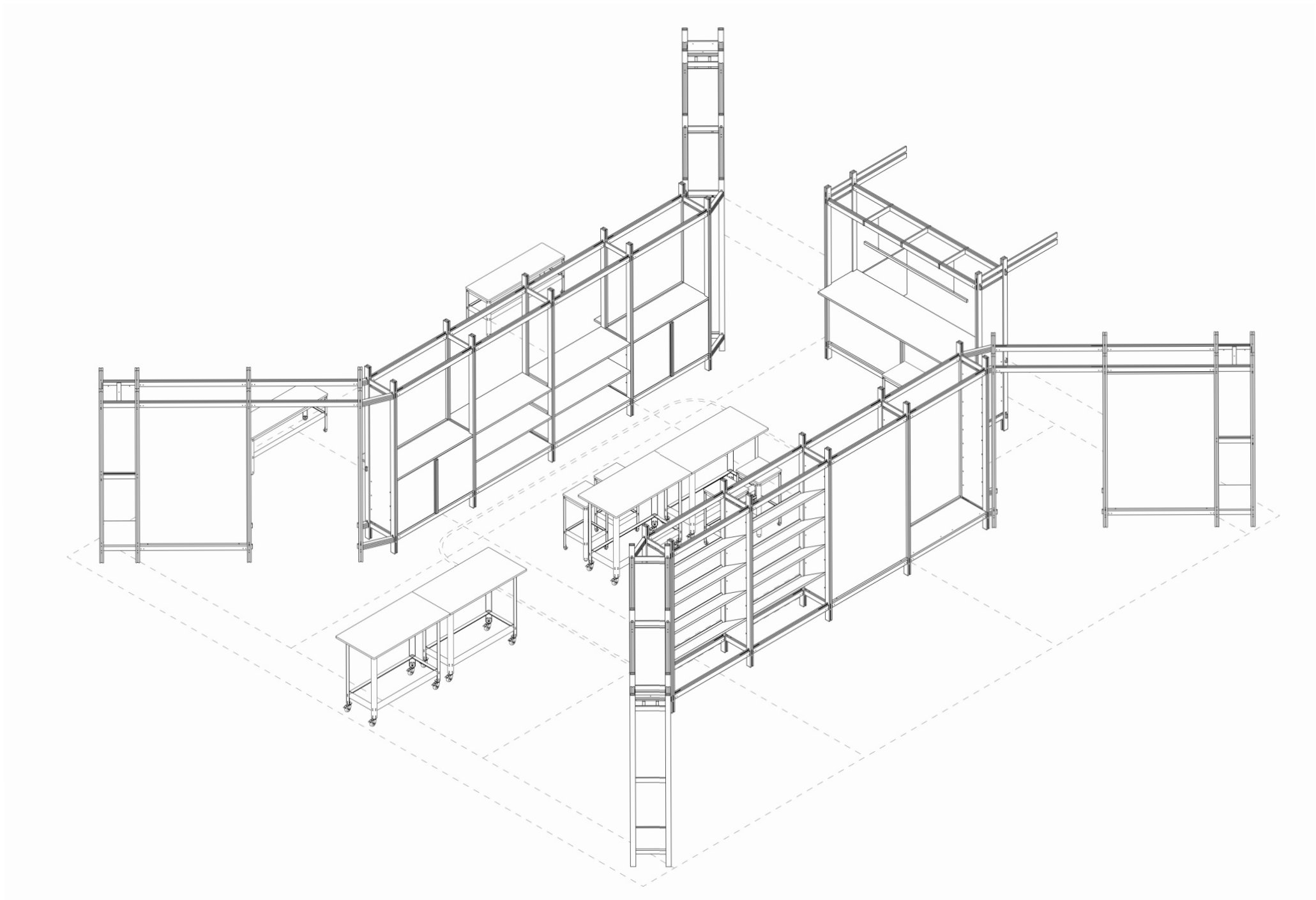
Archival Studies



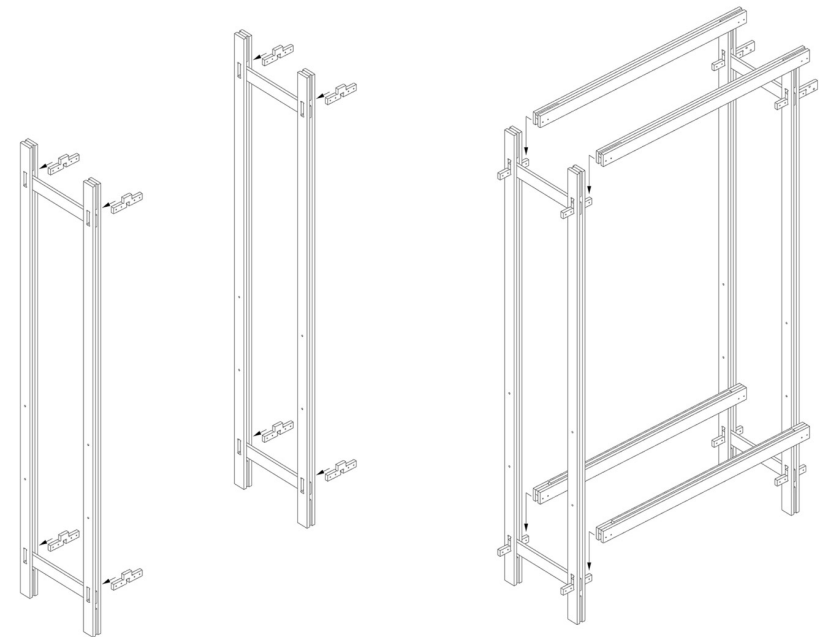
@archival\_studies

archivalstudies.net











# 360 DEGREE SERVICES

## ANALYSIS AND CO-CREATION

Every project begins with a deep understanding of place, history, and people. We analyze everything from existing interiors and collections to the building's heritage, ensuring that our design responds sensitively to context. Working closely with our clients, we co-create solutions that are both holistic and sensorial - enriching the experience for visitors while supporting employees. We see institutions as long-term partners, valuing their perspectives and initiatives to build meaningful, lasting relationships.

## CONCEPT AND SPACE PLANNING

Our service package includes space planning, office and back-of-house design, detailed furnishing budgets, visualizations, and full project timelines. We prioritize sustainable materials and solutions that reflect institutional values, ensuring that spatial identity and atmosphere align with brand and sustainability goals.

## DESIGN DEVELOPMENT

With the concept defined, we refine every detail. We distinguish between off-the-shelf items and custom-made solutions, tailoring designs to the institution's needs while balancing innovation, cost, and functionality.

## PROTOTYPING

To bridge the gap between vision and reality, we create physical prototypes and mock-ups. These allow stakeholders to test, see, and feel materials and dimensions—an approach far more tangible than renderings alone, and one that strengthens decision-making.

## PRODUCTION AND BUILDING

As architects, designers, and skilled craftspeople, we not only design but also build. With in-house production capacity, we can adapt and repair quickly while collaborating with trusted suppliers for larger-scale needs. This flexibility ensures resilience, efficiency, and consistent quality throughout the process.

## FURNISHING

We provide guidance and sourcing for furnishings that complement both functional and aesthetic requirements, always with an emphasis on durability, sustainability, and coherence with institutional identity.

## MANUALS AND MANAGEMENT

To secure long-term value, we deliver manuals for care, maintenance, and future adaptation. Our project and on-site management services ensure smooth implementation, from initial planning to final handover.

## PROJECT- AND ON-SITE MANAGEMENT

We take responsibility for the entire process, from planning to final implementation. Our project management ensures that timelines, budgets, and quality standards are met, while keeping communication transparent and efficient. On-site, we coordinate all stakeholders - designers, craftsmen, suppliers, and institutional staff - to secure a smooth workflow and minimize disruption to daily operations. By combining strategic oversight with hands-on presence, we provide institutions with the confidence that every detail is carefully managed and delivered to the highest standard.



# Context

Cultural institutions, by nature, foster openness - both through their programming and through their audiences, who expect engagement with contemporary societal issues. The temporary and small-scale character of most exhibitions and spaces also creates an exciting testing ground for sustainable and inclusive solutions. Beyond simply striving for low-emission production, exhibitions can function as both internal and external case studies, setting new standards and giving tangible meaning to sustainability and inclusion. In doing so, they offer a strong foundation for cohesion.

## Contact

---

For general inquiries  
please contact:  
[mail@archivalstudies.net](mailto:mail@archivalstudies.net)