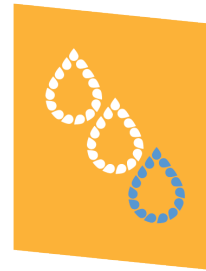




CENTRAL UTAH WATER

# Landscape Incentive Program

Utah  
Water  
Savers





## What you will learn:

---

- The different program options
  - Non-functional grass
  - The 5 steps to convert a landscape
  - Project maintenance and inspiration
  - Available resources
- 





# Program Options

## Lawn Removal



## Switch To Drip



## New Construction







CENTRAL UTAH WATER  
CONSERVANCY DISTRICT

# Lawn Removal

- Must reside in a city that has adopted water efficient landscape ordinances
- Must have existing lawn that is maintained
- Project area must be at least 200 square feet
- Must be irrigated with overhead spray







CENTRAL UTAH WATER  
CONSERVANCY DISTRICT

# Switch To Drip

- Must reside in a city with the water efficient landscape ordinances
- Project area must be at least 200 square feet
- Must have existing planting beds watered with overhead spray
- Zone must be separate from the lawn







CENTRAL UTAH WATER  
CONSERVANCY DISTRICT

# New Construction

- Must be in a city with water efficient landscape ordinances
- Full back yard projects only
- No square foot minimum
- Additional requirements if lawn is installed







CENTRAL UTAH WATER  
CONSERVANCY DISTRICT

# What is non-functional grass?





# Non-functional grass

## Creates Waste

Sprinklers are not  
designed to water areas  
less than 8' wide







# Non-functional grass

## Creates Waste

Average lawn park strips use 7,000-10,000 gallons per season







# Non-functional grass

## Unusable Space

- Difficult to maintain
- Exposure problems
- Heat island







CENTRAL UTAH WATER  
CONSERVANCY DISTRICT

# Identifying non- functional grass

Areas of lawn  
that are less  
than 8' wide







CENTRAL UTAH WATER  
CONSERVANCY DISTRICT

# Identifying non- functional grass

Lawn in areas  
where there are  
obstructions







CENTRAL UTAH WATER  
CONSERVANCY DISTRICT

# Identifying non- functional grass

Lawn planted on  
slopes





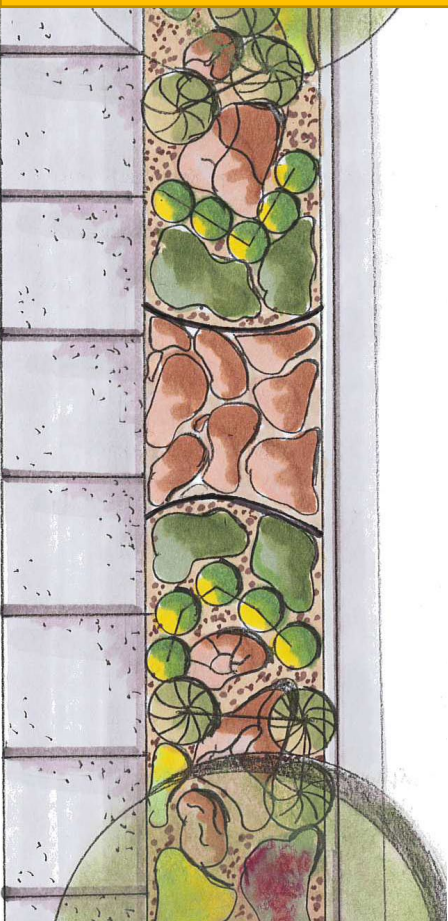


CENTRAL UTAH WATER  
CONSERVANCY DISTRICT

# Steps to Replace Non-Functional Grass

1

Plan &  
Design



2

Remove  
Lawn



3

Install  
Drip



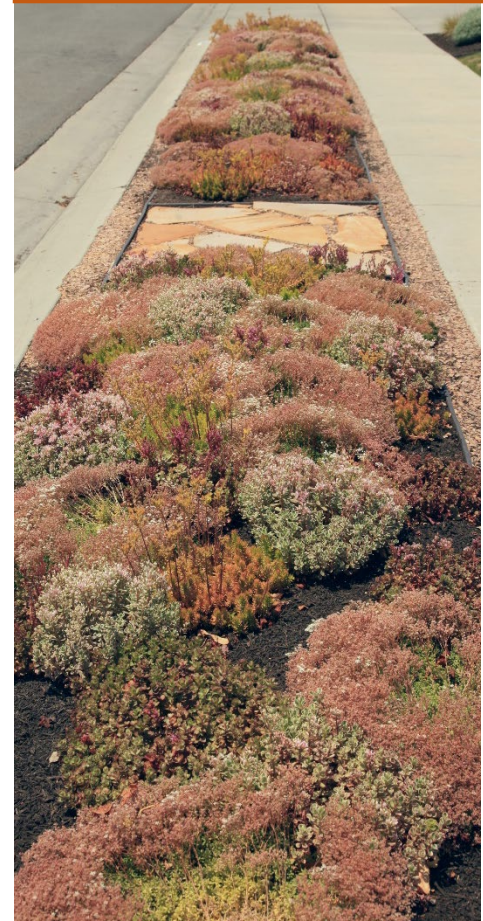
4

Add  
Hardscape



5

Plant &  
Mulch







\*Real results from past class participant

## Ordinances & Best Practices

- Park strips are owned by the city but maintained by you
- Check local regulations and codes
- Homeowner's Associations may have requirements too

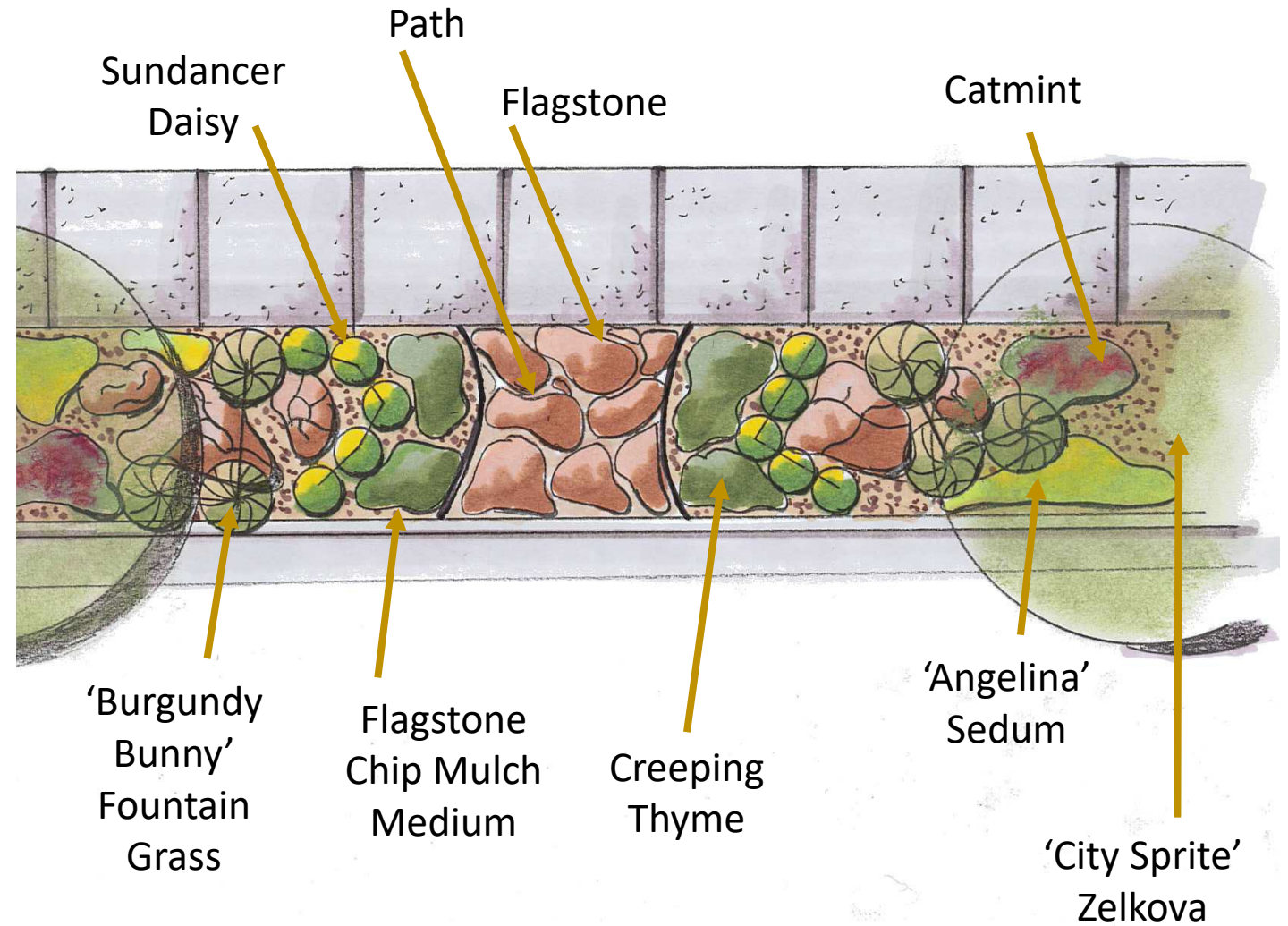




# 1

## Plan & Design

- Paths, plants, and drip irrigation
- Proper plant selection is important
- Plants should be waterwise, salt tolerant, and tough

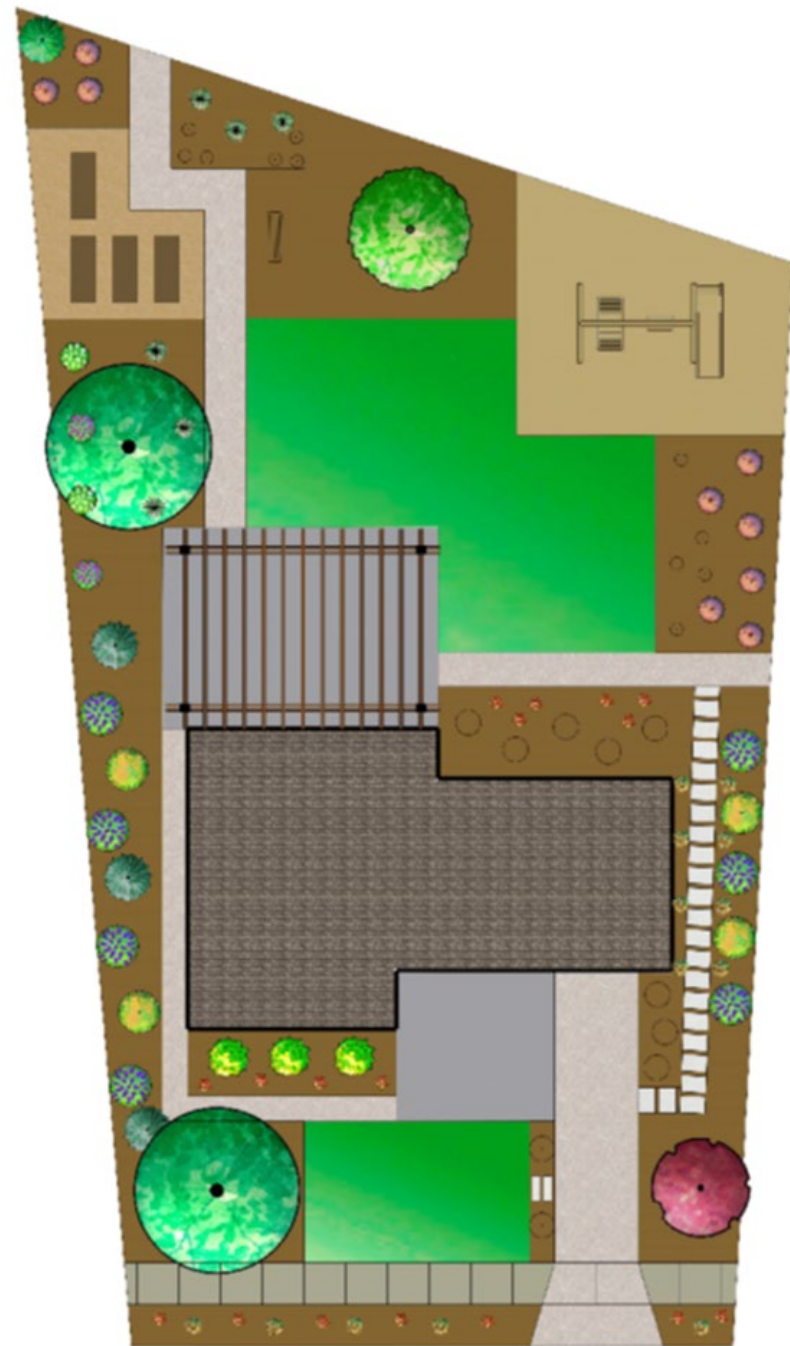




# 1

## Plan & Design

- Define the project order
- Determine how the areas affect one another
- Consider accessibility during demolition and construction







CENTRAL UTAH WATER  
CONSERVANCY DISTRICT

# Design Resources

## Free Park Strip Plans to Download



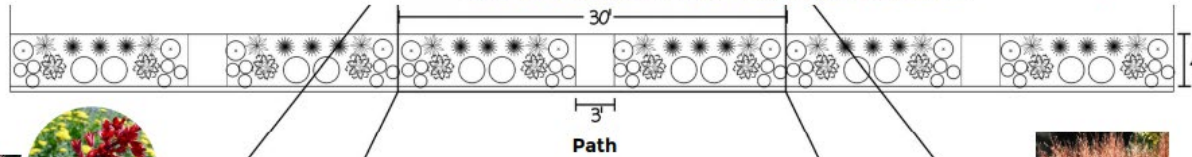
### Utah Park Strip Design Plan



Lush with  
Less

High Density  
Perennial Design

Locascapes.com



Brakelights Red Yucca



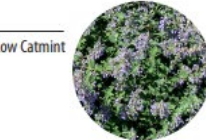
Moonshine Yarrow



Sundancer Daisy



Blaze Little Bluestem



Walkers Low Catmint

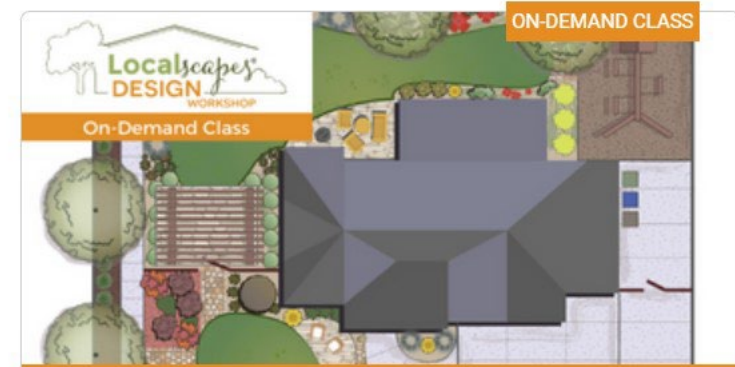
Plant List

Qty	Botanical Name	Common Name
<b>Ornamental Grasses</b>		
6	Schizachyrium scoparium 'Blaze'	BLAZE LITTLE BLUESTEM
<b>Perennials and Annuals</b>		
4	Achillea Millefolium 'Moonshine'	MOONSHINE YARROW
4	Agastache cana 'Sinning'	SONORAN SUNSET HUMMINGBIRD MINT
12	Hymenoxys acaulis	SUNDANCER DAISY
4	Nepeta x faassenii 'Walkers Law'	WALKERS LOW CATMINT
<b>Succulents</b>		
4	Hesperaloe parviflora 'Perpa'	BRAKELIGHTS RED YUCCA

Plant quantities are for each 30 ft section.

This design is free to use. Please credit Locascapes.com  
in order to copy, or share the content.  
For Non-Commercial use. Do not change content.

## Design Workshop



### Locascapes Design Workshop

On-Demand Class

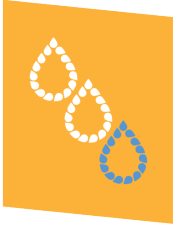
Registration Required

Now that you have learned the Locascapes process, let our professional team guide you through creating your own design plan in this hands-on design workshop that you can take from home. You will get practical tips and visual examples to help you create the best Locascape

[learn more](#)



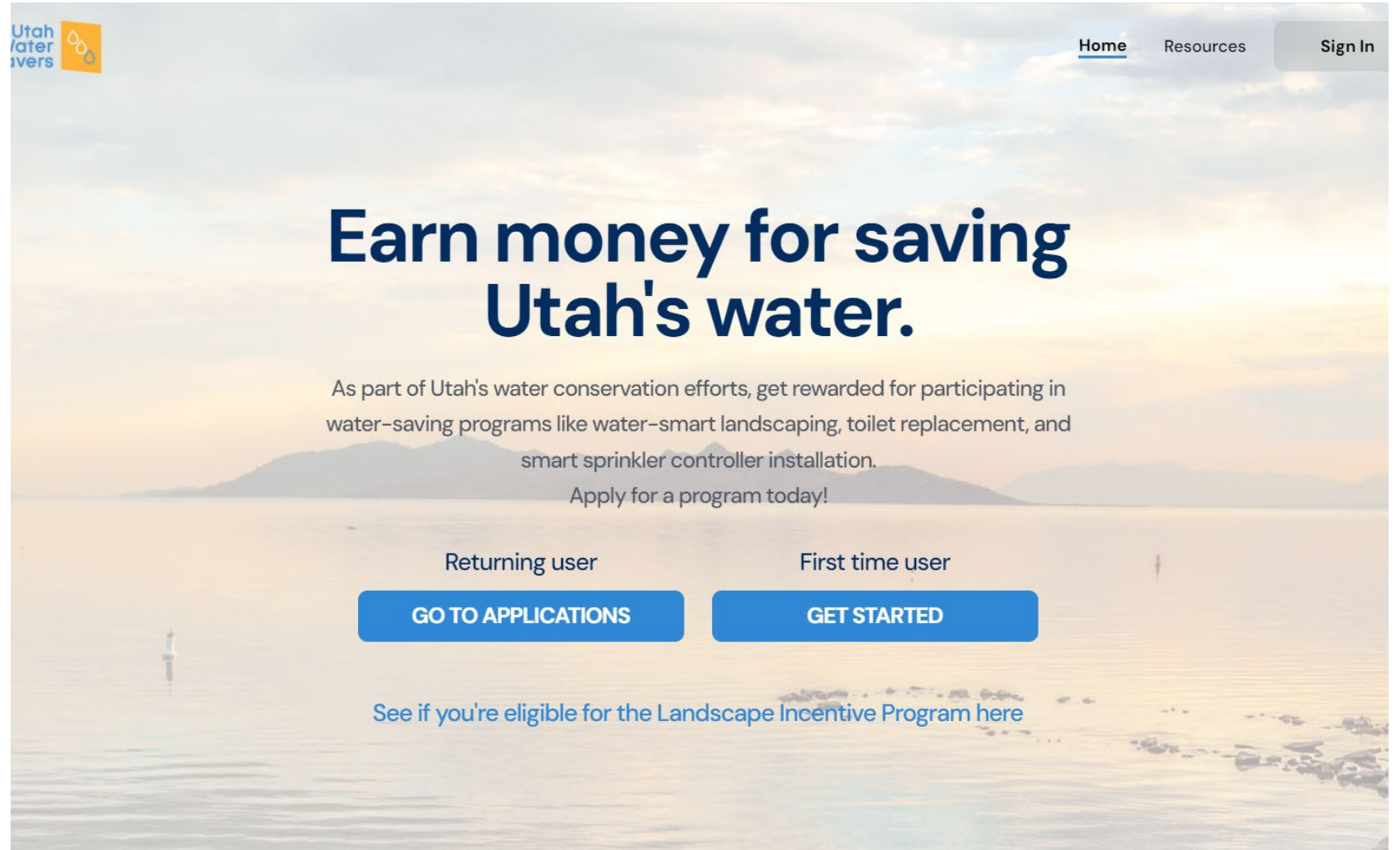
Utah  
Water  
Savers



## Requirement: Fill out an application

---

Once your design  
is complete, you  
are ready to apply  
for the Landscape  
Incentive Program



[www.utahwatersavers.com](http://www.utahwatersavers.com)







## Requirement: Before Photos

---

- Landscape Incentive Program application requires before photos of the project area/s
- Completed projects are not eligible



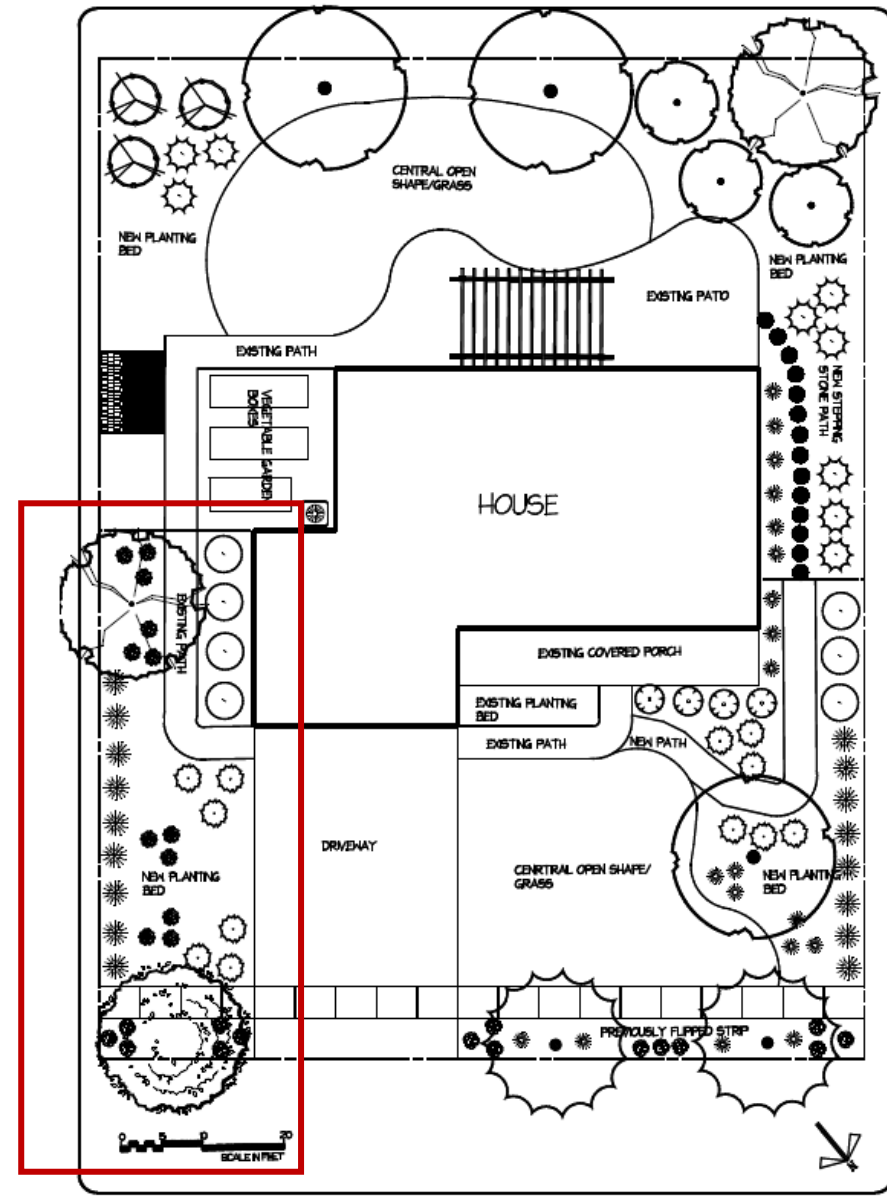
[www.utahwatersavers.com](http://www.utahwatersavers.com)





Landscape Incentive applications require a project plan and detailed description of what the project will be.

**Project Description:**  
We plan to remove 700 square feet of grass in the side yard and convert it to a planting bed with perennial plants, drip irrigation and covered with mulch. We will include a chat path that leads to the back yard.





Utah  
Water  
Savers



## Requirement: First Site Visit

---

Once you have submitted your application, you will be notified of an appointment for a site visit. You must complete this visit **BEFORE** you begin any work on your project.



[www.utahwatersavers.com](http://www.utahwatersavers.com)



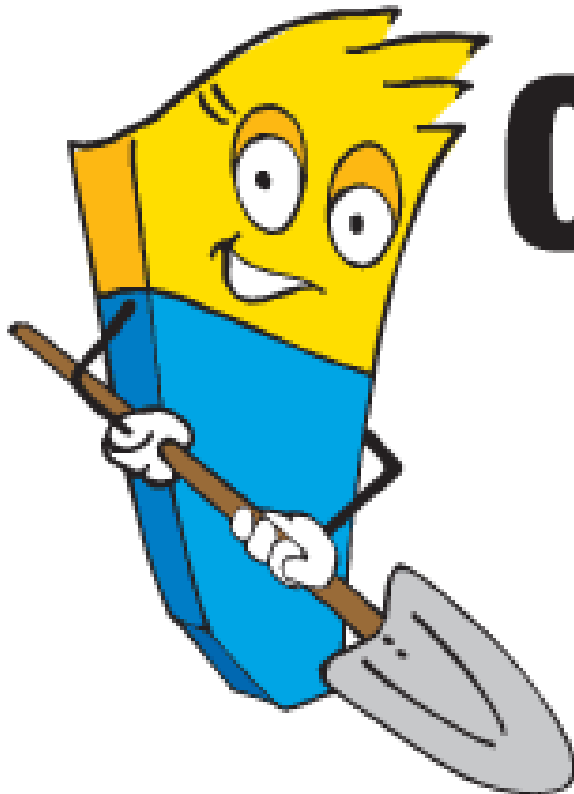


# FREE Utility Line Location Service

**Know what's below.**



**Call 811 before you dig.**



**BLUE STAKES OF UTAH**

UTILITY NOTIFICATION CENTER, INC.

**[www.bluestakes.org](http://www.bluestakes.org)**

**1-800-662-4111**



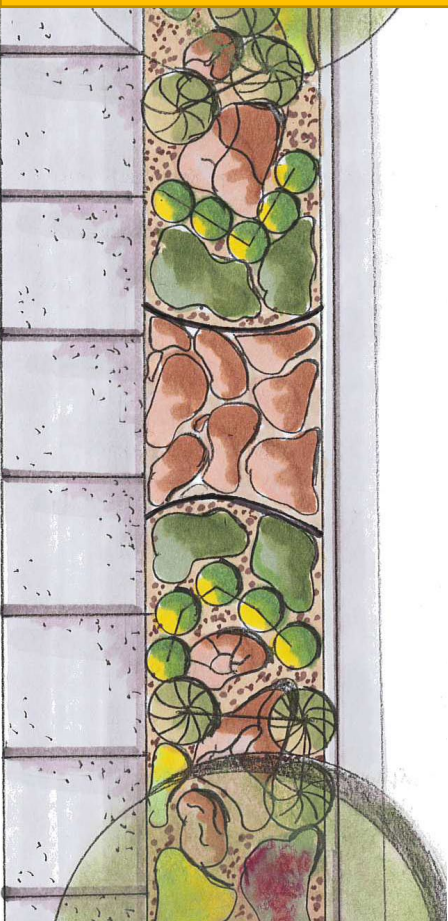


CENTRAL UTAH WATER  
CONSERVANCY DISTRICT

# Steps to Replace Non-Functional Grass

1

Plan &  
Design



2

Remove  
Lawn



3

Install  
Drip



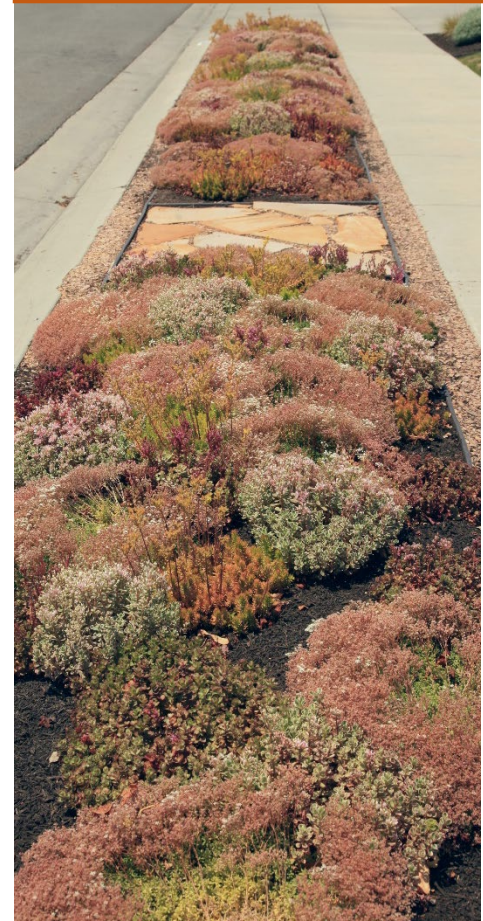
4

Add  
Hardscape



5

Plant &  
Mulch





# 2

## Remove Existing Lawn

- Lawn needs to be killed down to the roots before removal
- This can be done with glyphosate (Roundup) or plastic sheets

Plastic Sheets



Herbicides





# 2

## Remove Existing Lawn

- Lawn can be removed with a sod cutter or tiller
- Mark existing sprinkler heads with flags or sticks
- Be careful when removing lawn around existing trees

Sod  
Cutter



Tiller





# 2

## Remove Existing Lawn

- Lawn and soil should be removed 3-4" below the sidewalk
- This will help to retain a thick layer of mulch



Below  
Sidewalk



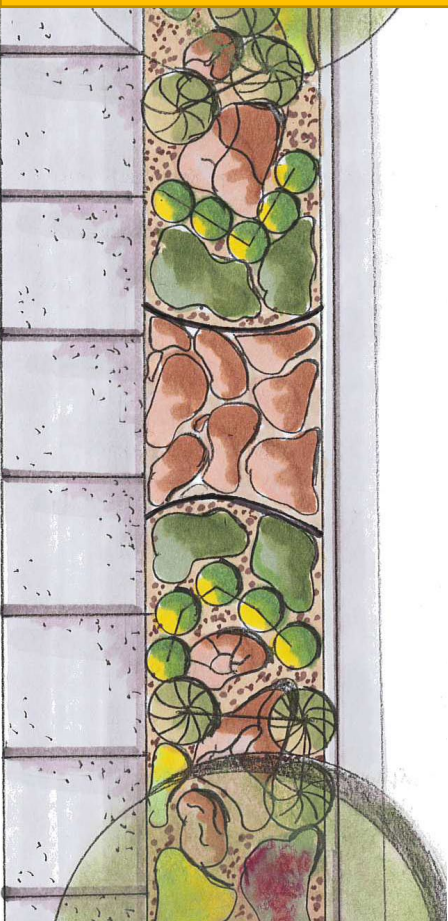


CENTRAL UTAH WATER  
CONSERVANCY DISTRICT

# Steps to Replace Non-Functional Grass

1

Plan &  
Design



2

Remove  
Lawn



3

Install  
Drip



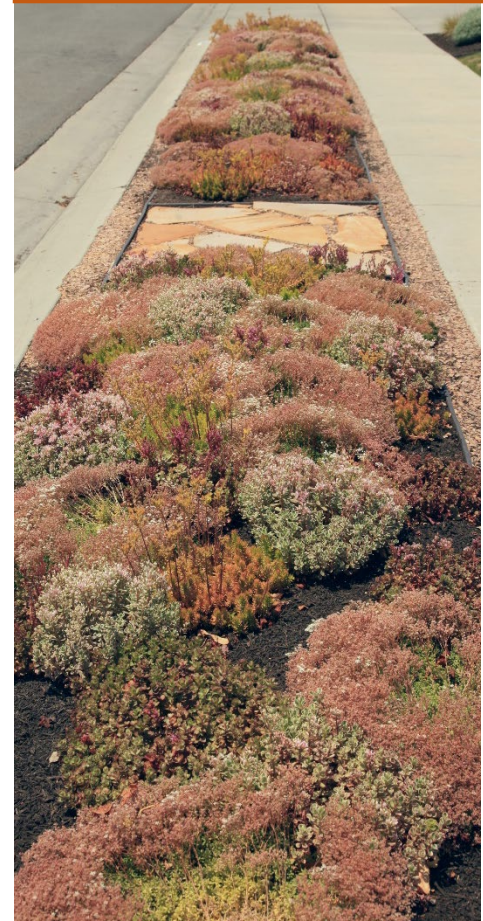
4

Add  
Hardscape



5

Plant &  
Mulch







## Requirement: Drip Irrigation

---

- Only one type of drip irrigation per zone
- Include a pressure regulator and filter
- Drip is on a separate zone from lawn



[www.utahwatersavers.com](http://www.utahwatersavers.com)





# 3

## Install Drip

- Converted areas should use one type of drip irrigation, either inline or point source
- Drip supplies water directly to the plant's roots
- Minimizes water waste

Inline



Point  
Source







# Install Drip

## Inline Drip Irrigation

---

- It is best to run inline drip in a grid pattern
  - This will evenly water the plants as they grow
- 







# Install Drip

## Inline Drip Irrigation

---

- Best used in planting beds with high density plantings
  - Grid pattern can conform to any shape
- 







CENTRAL UTAH WATER  
CONSERVANCY DISTRICT

## Existing Trees: Inline Drip

---

Create squares or circles with inline drip around trees to ensure adequate water







# Install Drip

## Point Source Irrigation

---

- Run blank distribution tubing down the length of the planting bed
  - Run individual lines to each plant. Add additional lines if the plant requires more water
- 







CENTRAL UTAH WATER  
CONSERVANCY DISTRICT

## Existing Trees: Point Source Drip

---

Add multiple lines  
with emitters  
around the tree and  
away from the  
trunk







## Requirement: Drip Irrigation

---

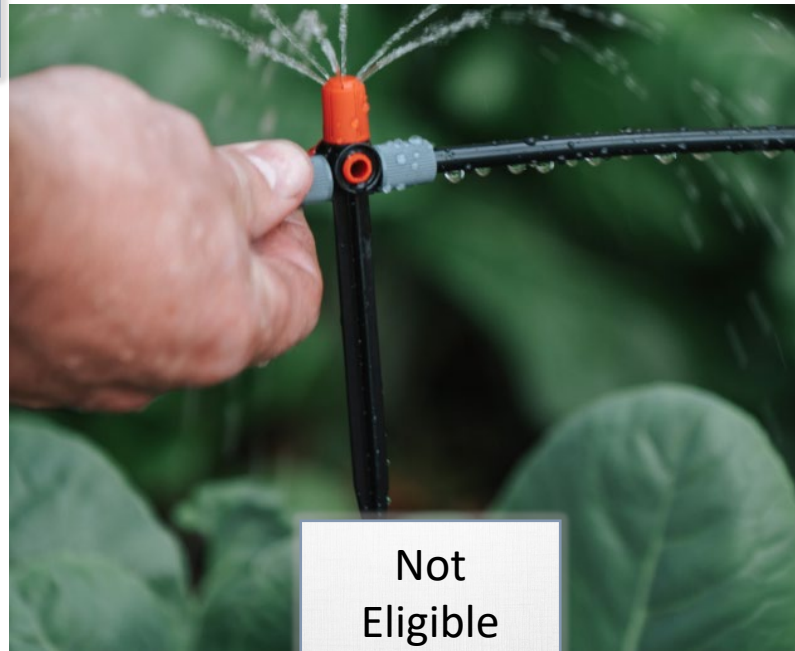
Micro-sprays,  
bubblers, and  
soaker hoses do  
not qualify as  
drip irrigation for  
this program



Not  
Eligible



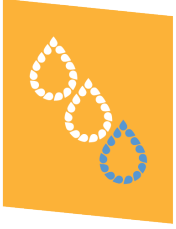
Not  
Eligible



Not  
Eligible







## Requirement: Drip Irrigation

---

Drip irrigation  
zones must have  
a pressure  
reducer and filter



[www.utahwatersavers.com](http://www.utahwatersavers.com)





# Drip Irrigation



## Sprinkler Valve:

- Used for lawn
- Spray sprinkler heads



## Drip Irrigation Valve:

- Used for drip
- Includes filter and pressure reducer



# Drip Irrigation



## Sprinkler Head:

- Used for lawn
- Overhead sprinkler heads



## Retrofit Head:

- Used for drip
- Includes filter and pressure reducer





CENTRAL UTAH WATER  
CONSERVANCY DISTRICT

# Drip Irrigation

Be sure to leave the filter accessible for maintenance and for the 2<sup>nd</sup> visit so that you can receive your rebate





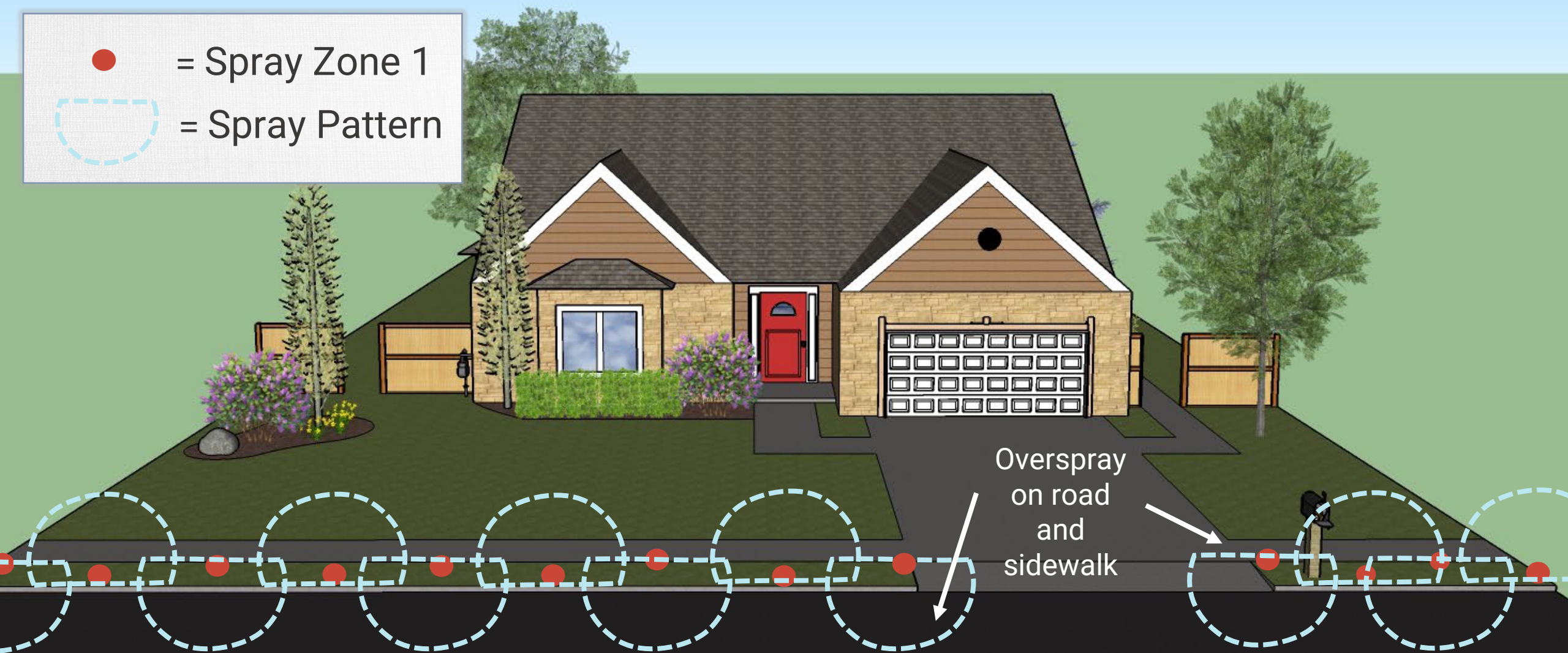


CENTRAL UTAH WATER  
CONSERVANCY DISTRICT

# Existing irrigation

● = Spray Zone 1

○ = Spray Pattern







CENTRAL UTAH WATER  
CONSERVANCY DISTRICT

# Drip conversion

● = RETROFITTED Sprinkler Head

● = CAPPED Sprinkler Head

--- = Drip Irrigation Tubing



TIP: No need to dig up all the old pipe, just cap off unnecessary spray heads.



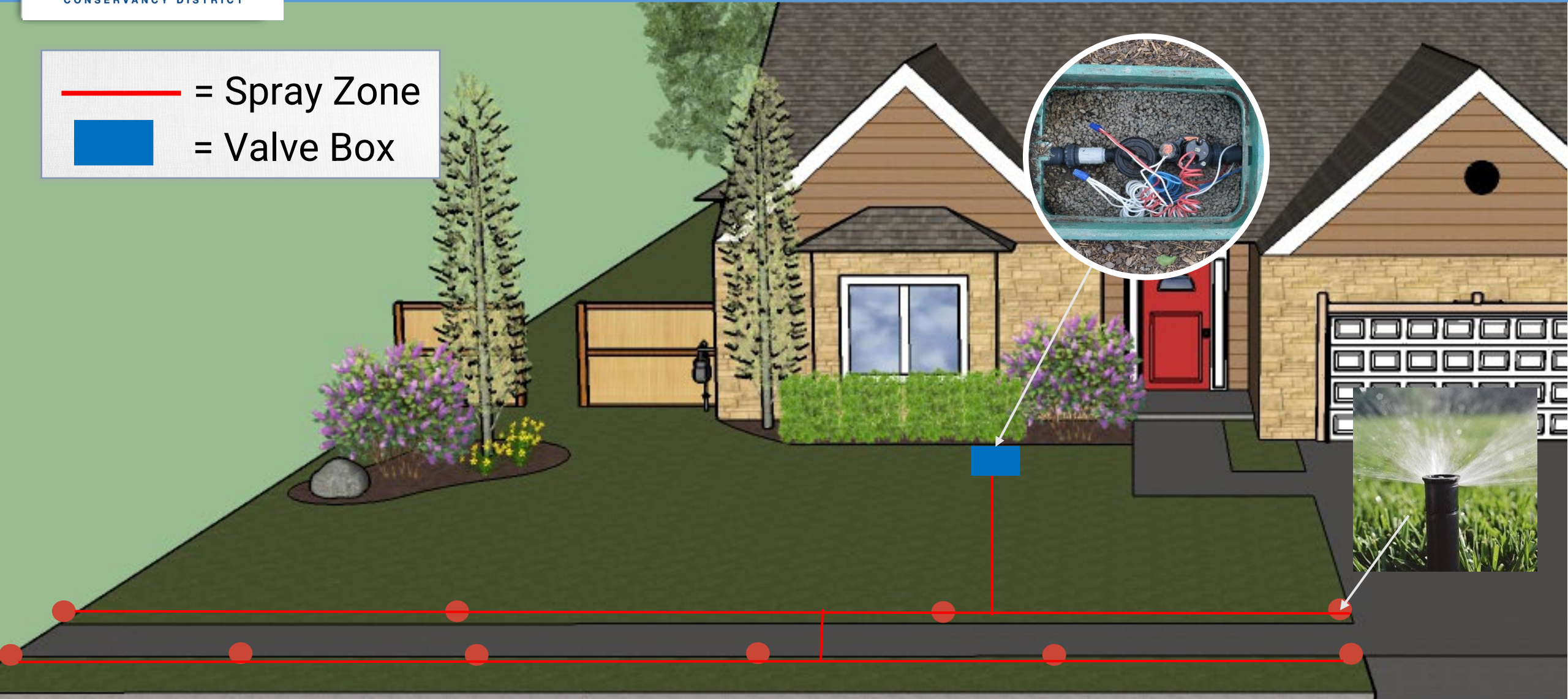


CENTRAL UTAH WATER  
CONSERVANCY DISTRICT

# Existing irrigation

— = Spray Zone

■ = Valve Box



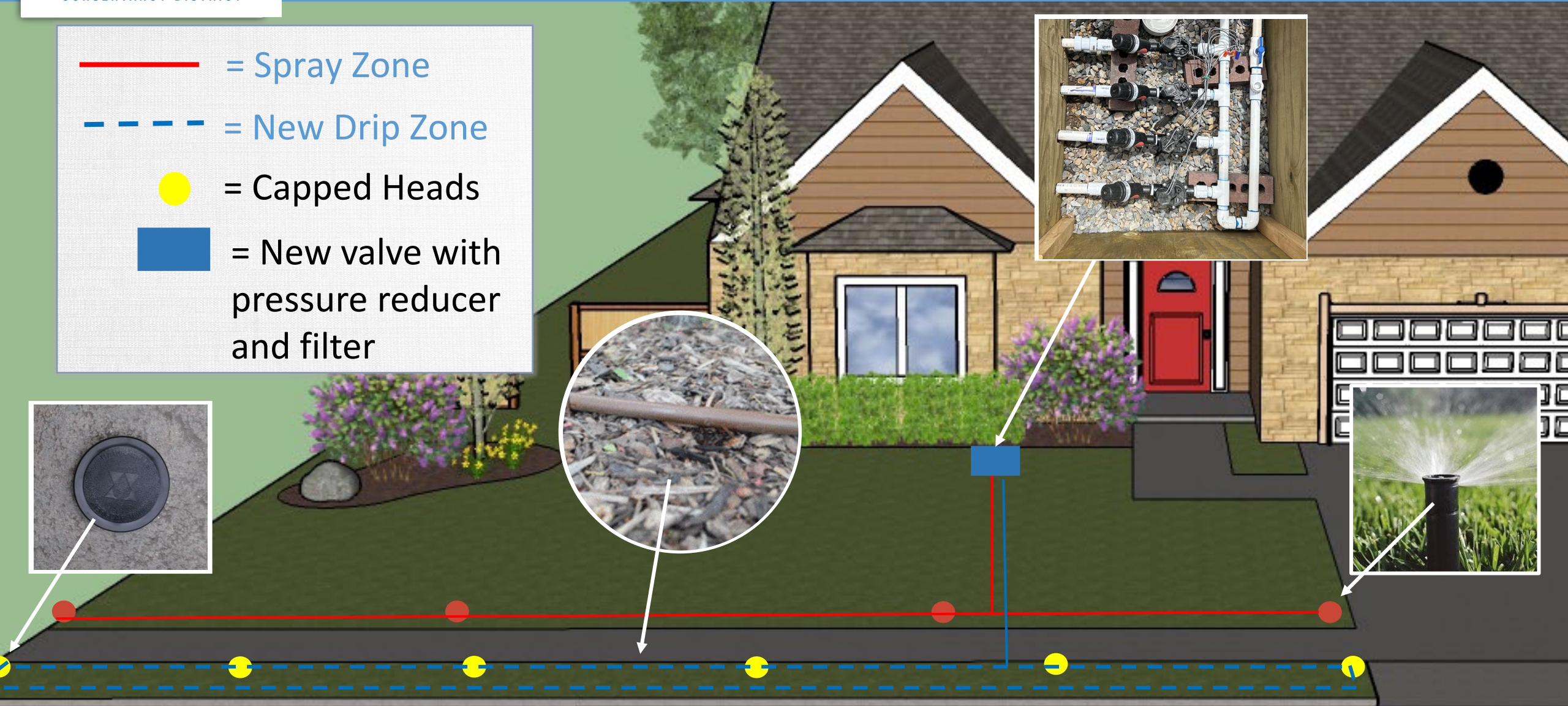




CENTRAL UTAH WATER  
CONSERVANCY DISTRICT

# Configuring the drip zone

-  = Spray Zone
-  = New Drip Zone
-  = Capped Heads
-  = New valve with pressure reducer and filter







CENTRAL UTAH WATER  
CONSERVANCY DISTRICT

# Existing irrigation

- = Spray Zone 1
- = Valve Box







CENTRAL UTAH WATER  
CONSERVANCY DISTRICT

# Configuring the drip zone

- = Capped Heads
- = PVC threaded elbow





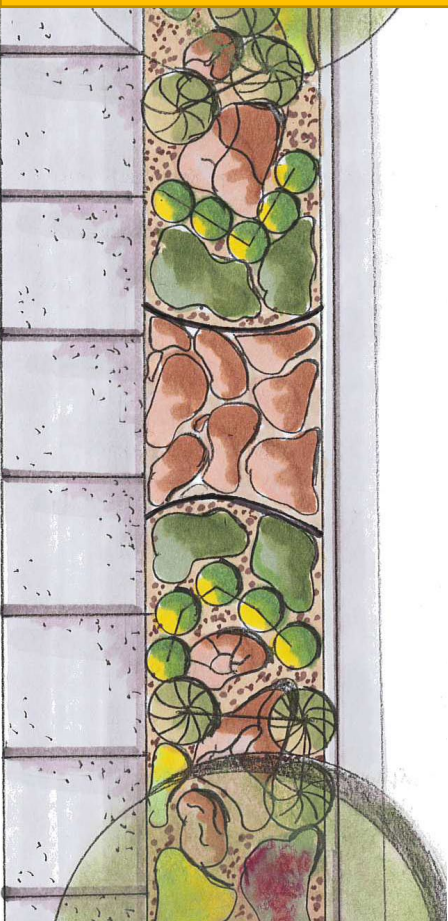


CENTRAL UTAH WATER  
CONSERVANCY DISTRICT

# Steps to Replace Non-Functional Grass

1

Plan &  
Design



2

Remove  
Lawn



3

Install  
Drip



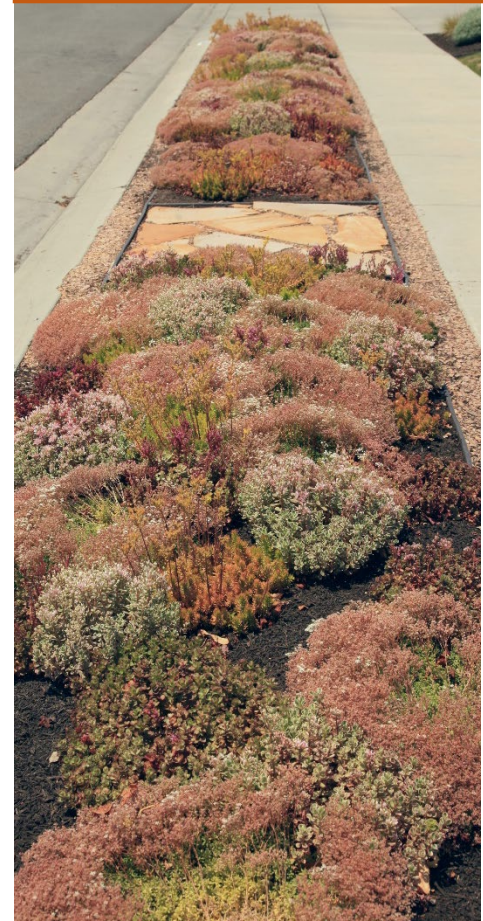
4

Add  
Hardscape



5

Plant &  
Mulch

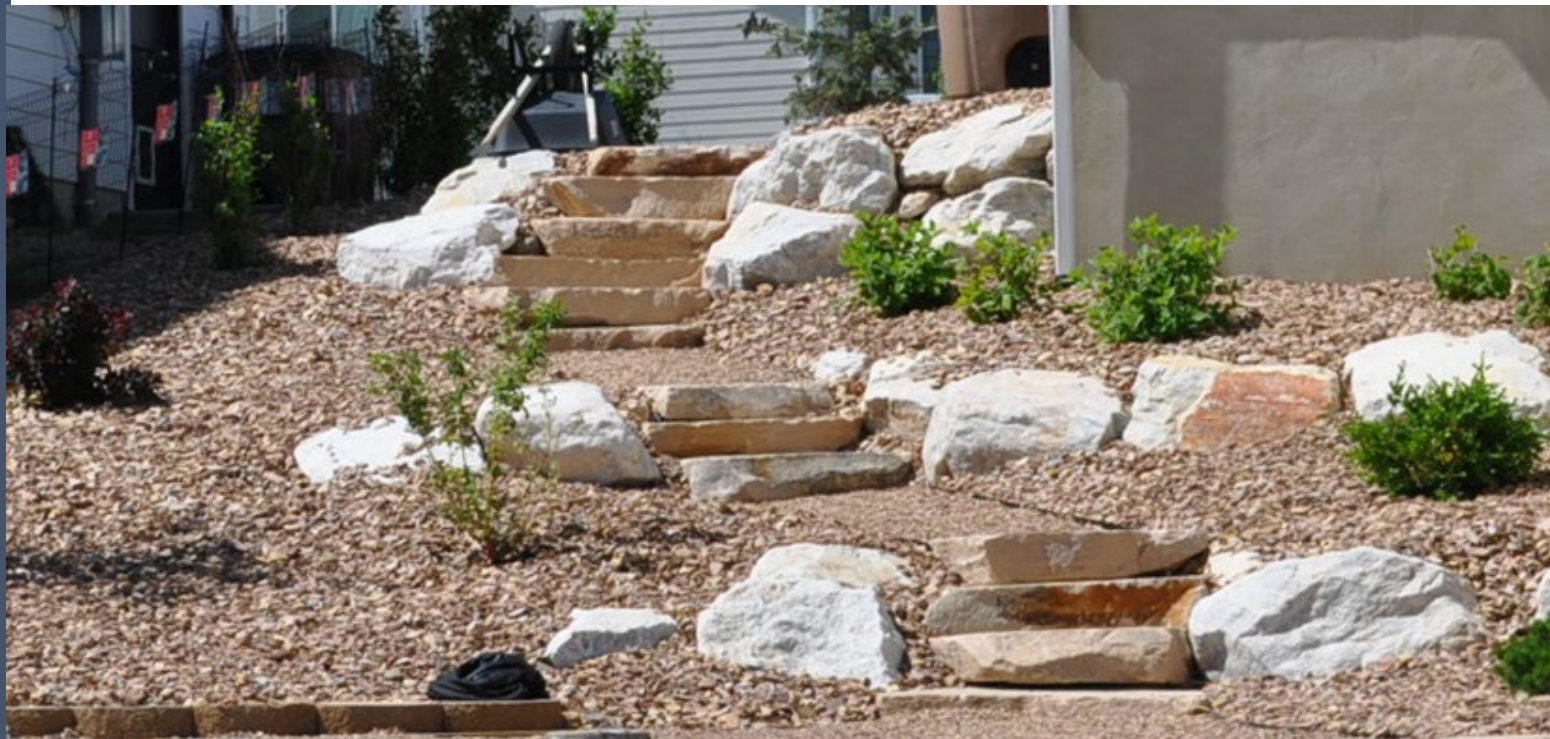






# Add Hardscape

- Create pass-through areas throughout the landscape
- Make sure the path is large enough for safe passage







## Requirement: Permeable Materials

---

Hardscape must  
be permeable to  
water and air



[www.utahwatersavers.com](http://www.utahwatersavers.com)

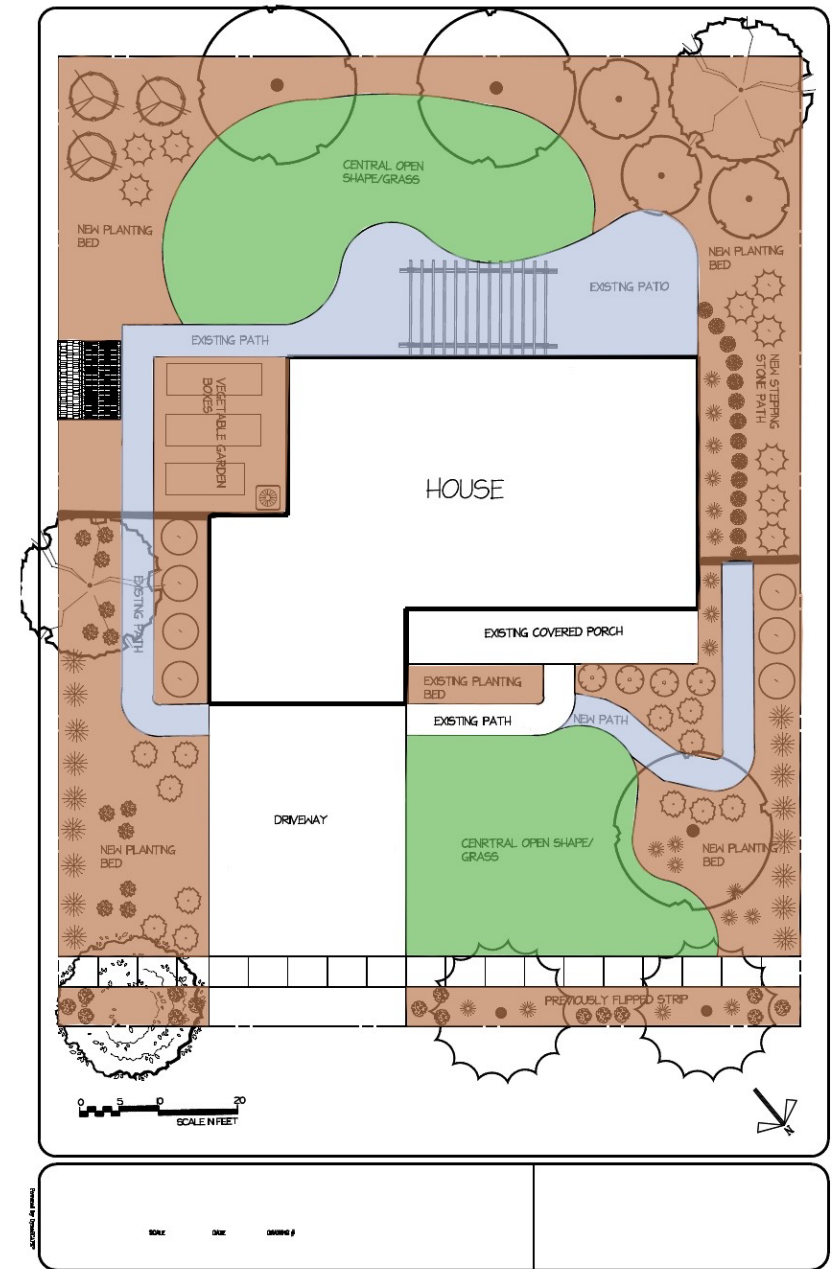
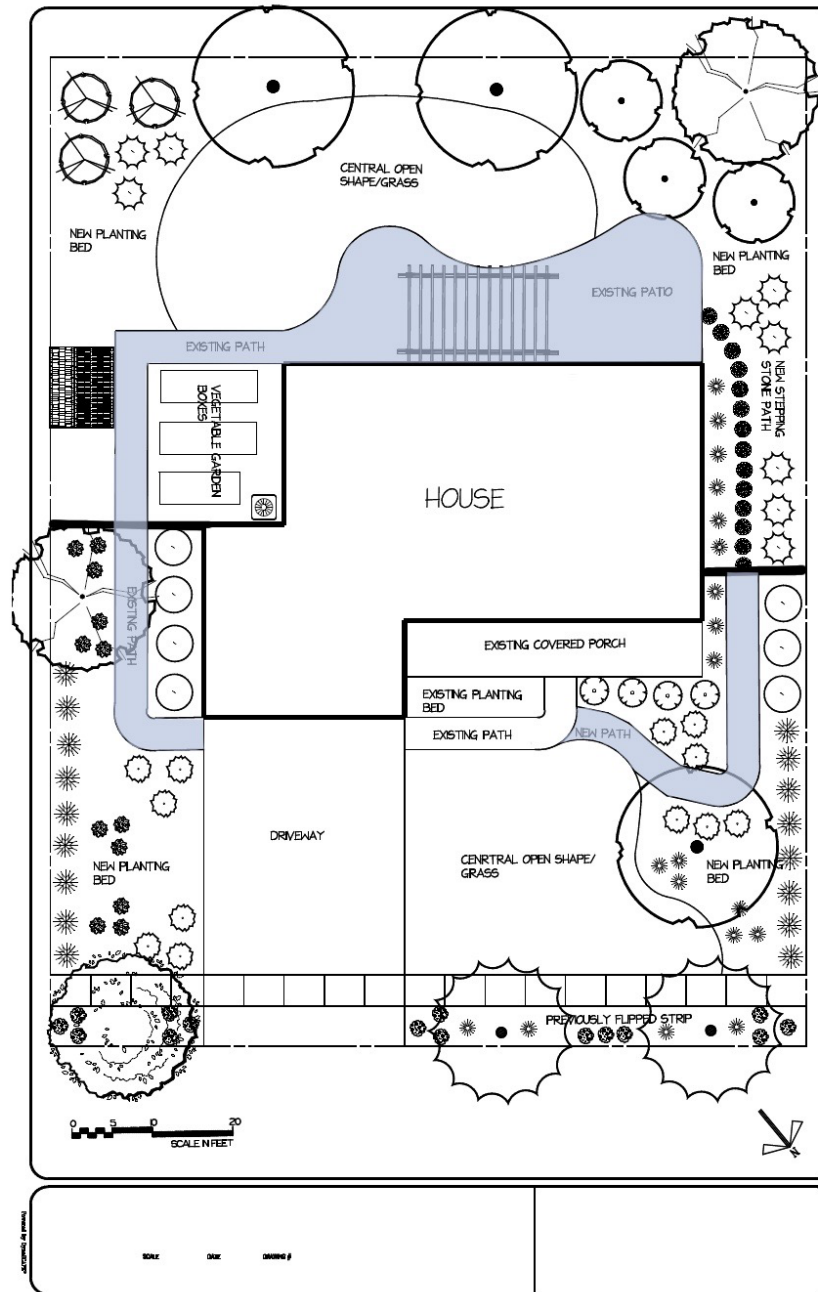






## Requirement: Landscape Area

Hardscape  
cannot exceed  
50% of the front  
yard or 75% of  
the back yard





## Best Practices: Drip & Hardscape

Run blank drip tubing  
through a conduit below  
path for ease of  
maintenance





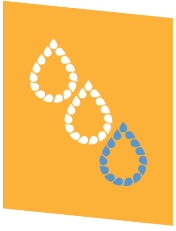
# 4

## Hardscape Considerations

- Hardscape materials should be kept away from any existing or new trees
- This helps maintain the health of the tree and the integrity of the hardscape







## Requirement: Materials

---

Artificial turf and  
water features  
will not be  
included in  
incentive square  
footage



Not  
Eligible



Not  
Eligible





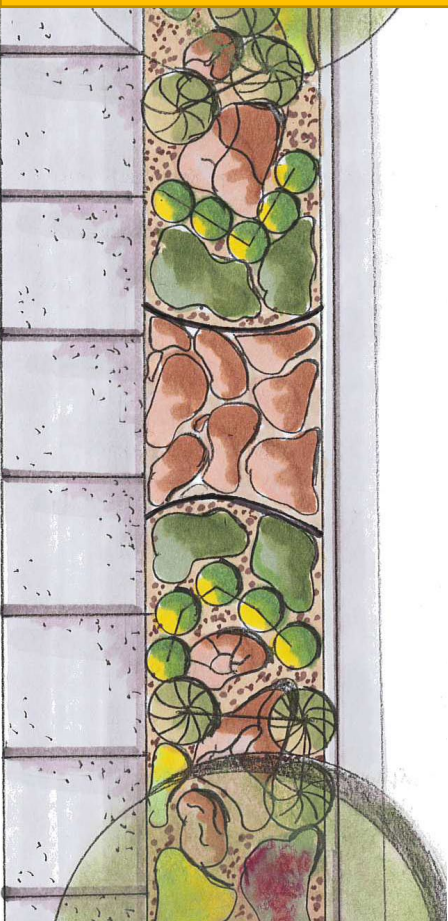


CENTRAL UTAH WATER  
CONSERVANCY DISTRICT

# Steps to Replace Non-Functional Grass

1

Plan &  
Design



2

Remove  
Lawn



3

Install  
Drip



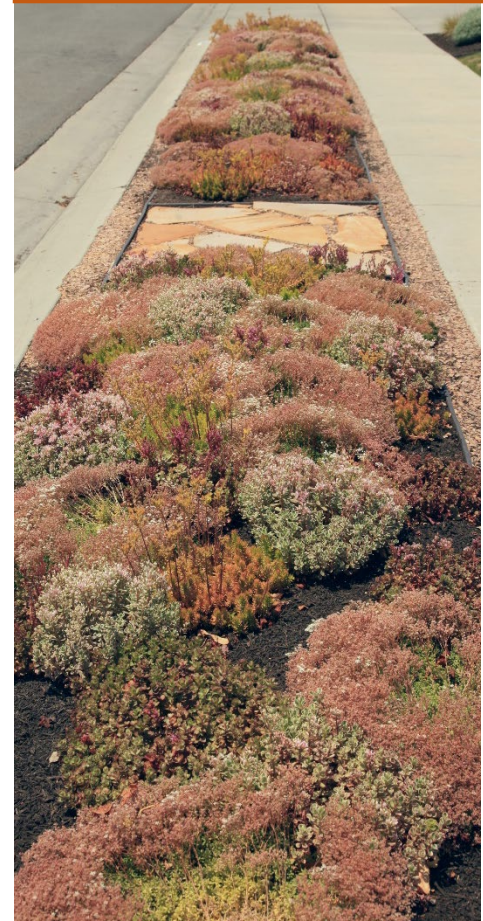
4

Add  
Hardscape



5

Plant &  
Mulch







CENTRAL UTAH WATER  
CONSERVANCY DISTRICT

# Why are plants important?

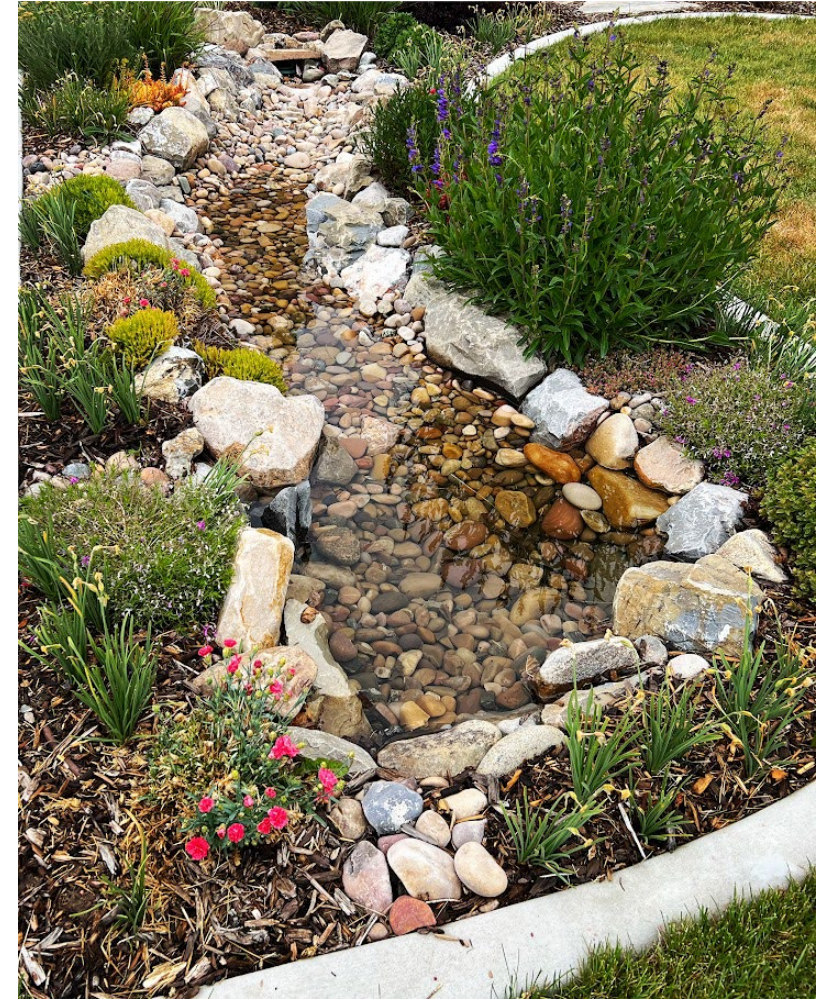
Reduce urban heat island



Supports wildlife



Improves water quality







# Plants

- Plants should be waterwise, compact, and tough
- Salt tolerance is recommended for the park strip



\*Real results from past class participant





## Requirement: Plant Height

---

Plants in the park strip must be shorter than 24" tall to not block sight lines from the driveway or road



[www.utahwatersavers.com](http://www.utahwatersavers.com)







## Requirement: Plant Coverage

Plants must cover  
50% of the converted  
area at maturity

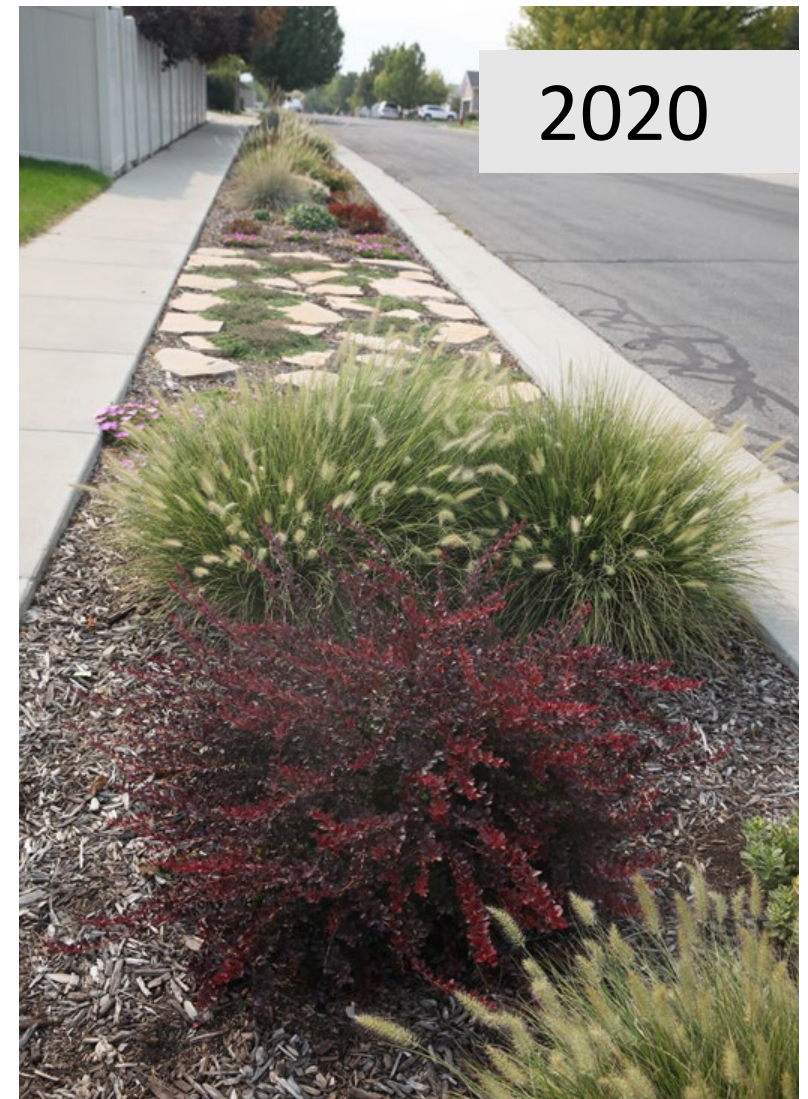
Bulbs, annuals, and  
trees do not count  
toward the  
requirement

\*Real results from past  
class participant

2018



2020



[www.utahwatersavers.com](http://www.utahwatersavers.com)





# 5

## Plants

Plants should be the correct size for the area they are planted in







# Plants

We strongly discourage  
the removal of existing  
**healthy** trees







# Plants: Mulch

- Cover the ground with mulch
- Helps retain soil moisture and reduce weeds
- Material is a matter of personal preference

gravel or  
river rock



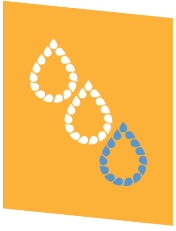
bark or  
compost



chat or  
DG







## Requirement: Mulch

---

3-4" of mulch are  
required

Mulch can be rock, wood  
chips, composted mulch,  
etc.



[www.utahwatersavers.com](http://www.utahwatersavers.com)

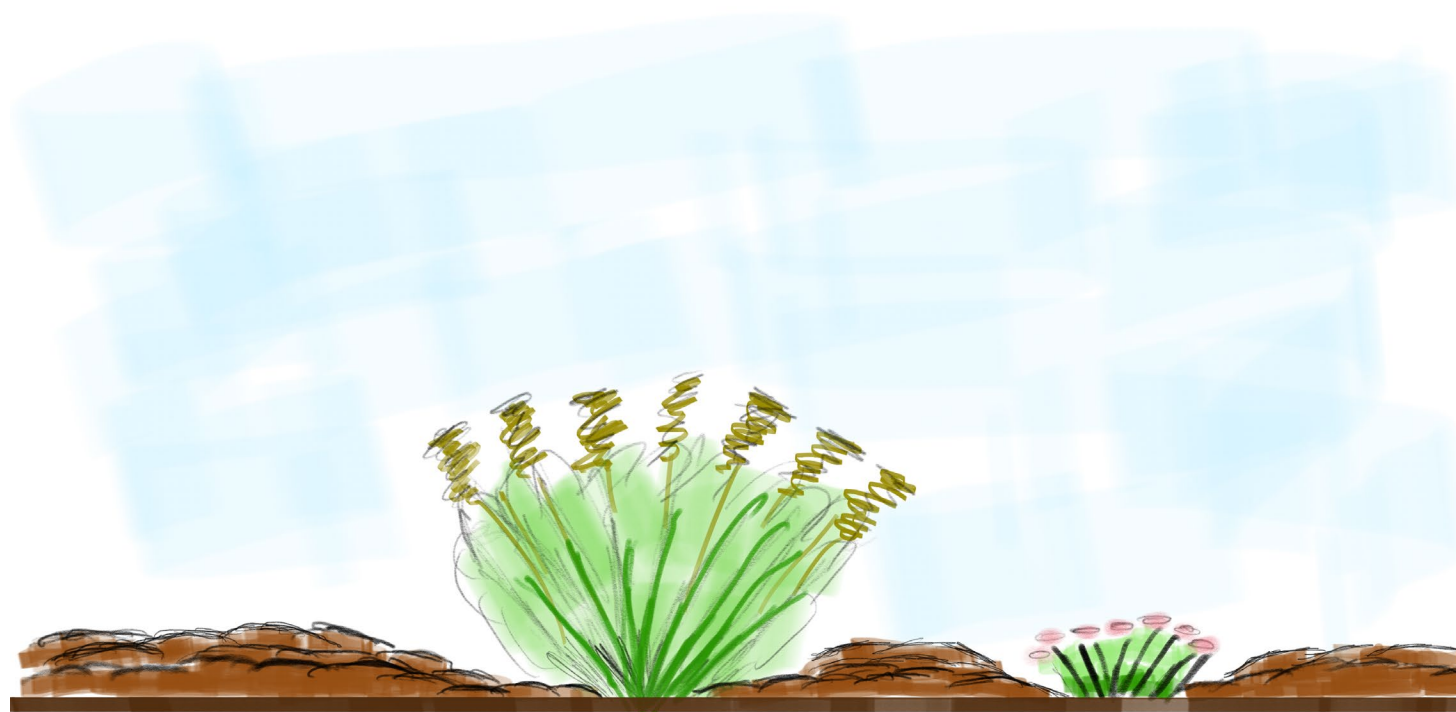




# 5

## Plants: Mulch

- Plant in the soil
- Taper the thick mulch layer away from the plants
- Replenish as often as needed to maintain thickness







CENTRAL UTAH WATER  
CONSERVANCY DISTRICT

# Planting Bed Maintenance

---

Tips and techniques  
to keep it low  
maintenance and  
beautiful.





# Establishment Watering

- New plants can't handle long periods without water
- Water every other day for the first two weeks
- After the first two weeks you can scale back the watering to 2-3 times per week or as needed





# Established Watering

---

- Waterwise planting beds should be watered deeply and infrequently
  - Once plants are established, they should be watered once per week for about 1 hour
- 





# Weed Control Recipe

1. Water with drip irrigation
2. Apply 3"-4" of mulch
3. Avoid soil compaction
4. Minimize soil disruption
5. Use herbicides only AFTER trying the first four steps

\*Real results from past class participant





# Maintenance Mistakes

---

- Landscape fabric kills the soil
  - Only works on weeds temporarily
  - Decreases plant health
  - Should only be used under hardscape
- 







CENTRAL UTAH WATER  
CONSERVANCY DISTRICT

# Project Inspiration

---

Ideas from  
successful  
incentive projects

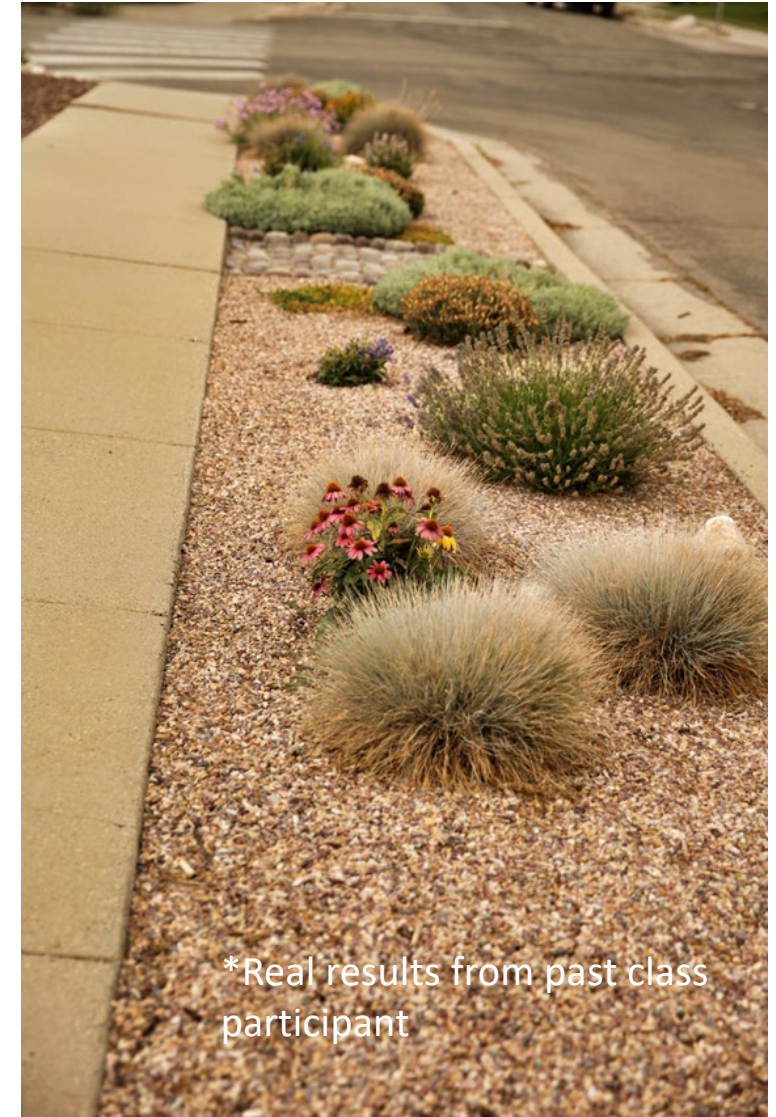




# Park Strip Conversion



\*Real results from past class participant



\*Real results from past class participant





CENTRAL UTAH WATER  
CONSERVANCY DISTRICT

# Create Curb Appeal (literally!)



Lawn  
Park Strip  
(July)

Flipped  
Park Strips



Lawn  
Park Strip

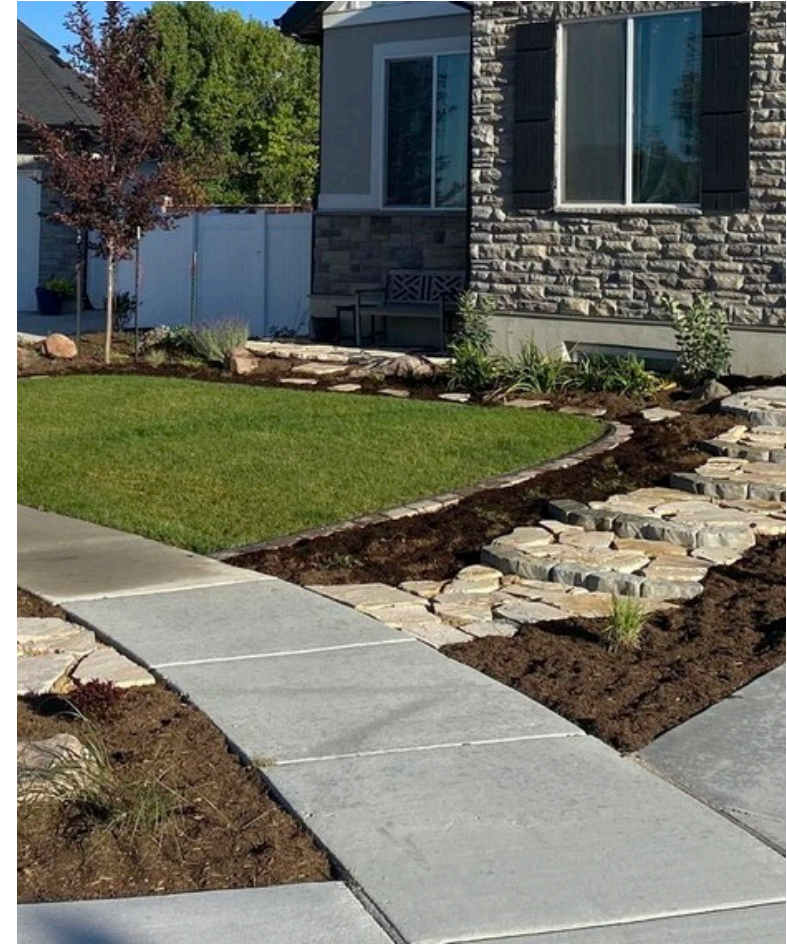
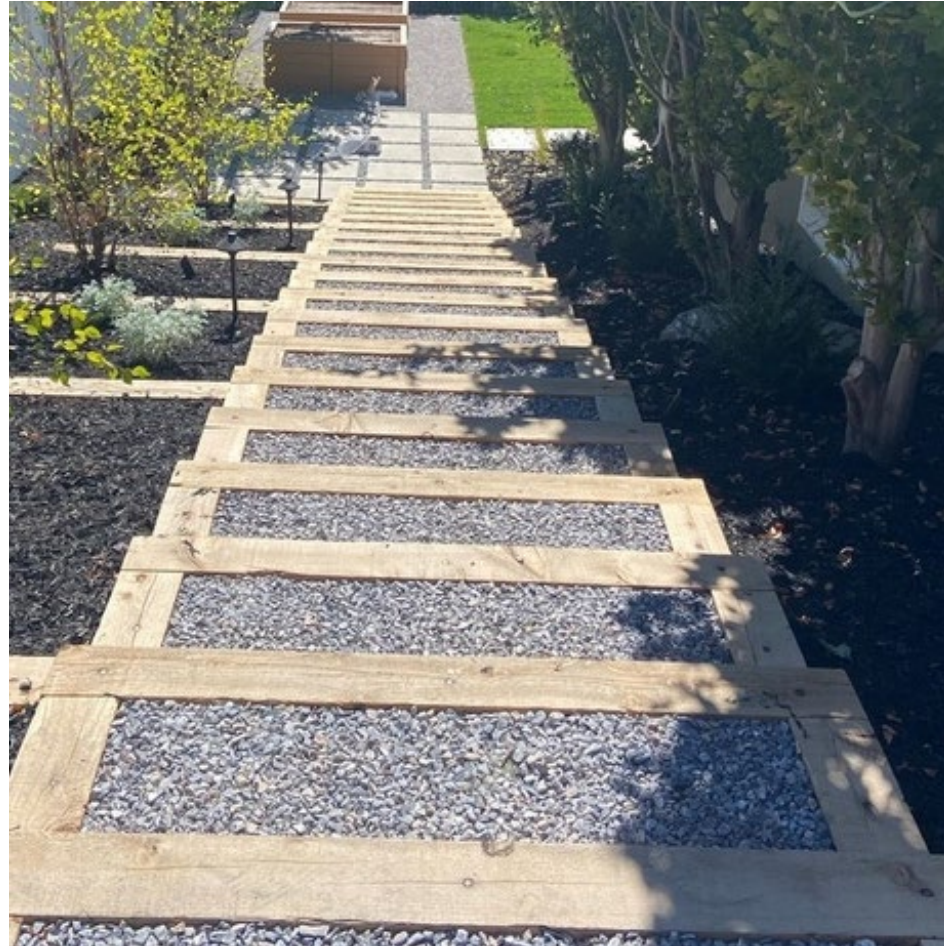
\*Real results from past class  
participant





CENTRAL UTAH WATER  
CONSERVANCY DISTRICT

# Path Projects







CENTRAL UTAH WATER  
CONSERVANCY DISTRICT

# Path Projects







CENTRAL UTAH WATER  
CONSERVANCY DISTRICT

# Side Yard Conversion

**BEFORE**



**AFTER**







# Side Yard Conversion

**BEFORE**



**AFTER**





# Completed Projects

---

- You have 12 months to complete your project
  - Log back into your Utah Water Savers account to request your 2<sup>nd</sup> visit
  - The water must be operational
  - You must sign your agreement and fill out a W-9 before you receive your incentive
- 







# Key Requirements

- You cannot begin your project until it has been **approved**
- Project area must be at least **200 square feet**
- The project **cannot** create **non-functional grass** areas
- **50% plant coverage** at maturity
- 3-4 inches of **mulch**
- Drip system on its **own zone**
- Only **one type of drip** irrigation per zone
- The water must be on for your **2nd visit**

Park strip plants  
must stay  
below 24" in  
height







CENTRAL UTAH WATER  
CONSERVANCY DISTRICT

# Switch To Drip

- Must be at least 200 square feet
- Must have existing overhead irrigation in the planting beds
- Must be on a separate zone from the lawn
- Must have 3-4" of mulch
- Must have 50% plant coverage at maturity



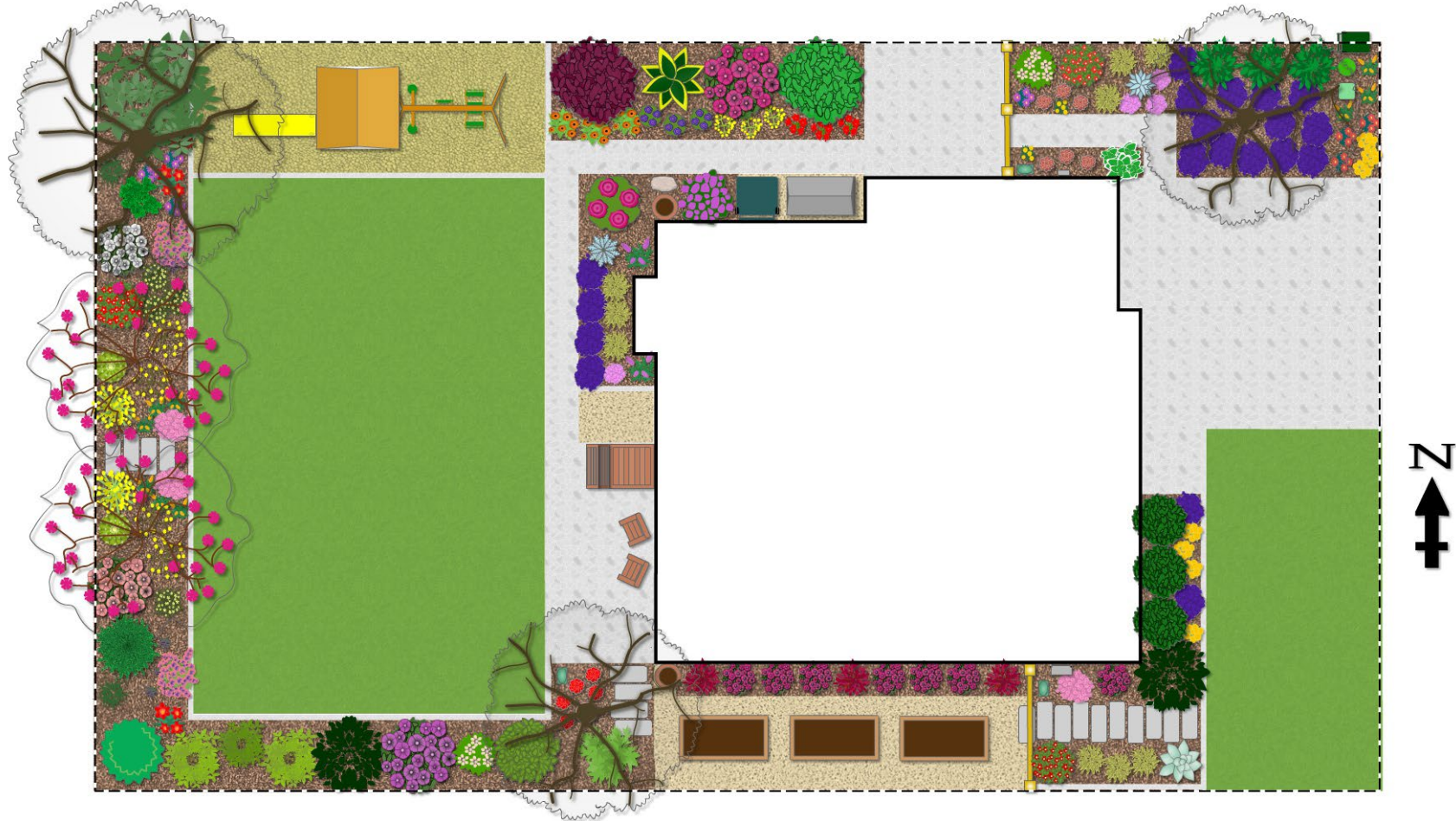




CENTRAL UTAH WATER  
CONSERVANCY DISTRICT

# New Construction

- Lawn cannot exceed 35 % of the total back yard area
- Lawn cannot be used as a path
- Lawn cannot be narrower than 8 feet
- Lawn cannot have obstructions in it
- Lawn cannot be planted on a slope







CENTRAL UTAH WATER  
CONSERVANCY DISTRICT

# Treebate

- Add-on to an existing application
- Minimum of 1" caliper
- Maximum of 5 trees
- Must be planted in the ground without a cage or burlap
- Must retain plant tags from the time of purchase





# Resources:

## Facebook



Localscapes Work Group

<http://facebook.com/groups/localscapes>



<https://www.facebook.com/utahwatersavers>

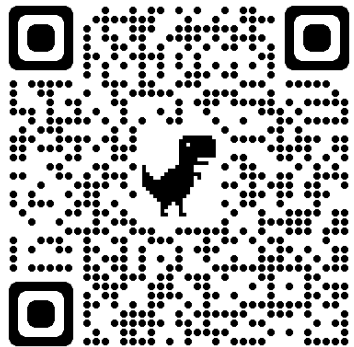






CENTRAL UTAH WATER  
CONSERVANCY DISTRICT

# Plant Database



◀ Back to search



## After Midnight Coneflower

**Common Name:** After Midnight Coneflower

**Botanical Name:** Echinacea 'After Midnight'

**Plant Type:** Perennial

**Light Requirements:** Partial Shade, Sun

**Bloom Time:** Summer

**Bloom Color:** Purple

**Water Requirements:** Low

**Height:** 12"

**Width:** 12"-14"

**Hardiness Zones:** 3-8

**Deer Resistant:** Yes

**Utah Native:** No

Goes well with



Becky Shasta Daisy



Firewitch Dianthus



Baby Gold Goldenrod

[cuwcd.gov/plants](http://cuwcd.gov/plants)








# Plant Database





Photography Volunteer Jobs About Blog Contact [SUBSCRIBE](#) [DONATE](#)

Visit Find Plants Events & Classes Landscaping Help Rent Facility

Find Waterwise Plants

[Search](#)

☒ Advanced Search Filters

Plant Type ?

Garden Area ?

Bloom Season ?

☐ Foliage Interest ?  
☐ Erosion Control ?

Irrigation Requirement ?

Localscapes Planting Design Elements ?

Bloom Color ?

☐ Utah Native ?  
☐ Groundcover ?


☐ Nativar ?  
☐ Evergreen ?


☐ Deer Resistant ?  
☐ Foodscape ?

☐ Salt Tolerant ?  
☐ Pollinator Friendly ?

[SEARCH](#)

Alphabetical Plant Search: [All](#) [A](#) [B](#) [C](#) [D](#) [E](#) [F](#) [G](#) [H](#) [I](#) [J](#) [K](#) [L](#) [M](#) [N](#) [O](#) [P](#) [Q](#) [R](#) [S](#) [T](#) [U](#) [V](#) [W](#) [X](#) [Y](#) [Z](#)

 Conservation Garden Park  
801-256-4400  
8275 South 1300 West  
West Jordan, Utah 84088



 15  
Apr  
8 - 6:30pm  
Mon-Sat

May-Aug  
8 - 8pm  
Mon-Sat

Sep-Oct  
8 - 6:30pm  
Mon-Sat

Nov-Mar  
8 - 5pm  
Mon-Fri

Open year round. Closed [some holidays](#).



JORDAN VALLEY WATER  
CONSERVANCY DISTRICT

Visit Find Plants Events & Classes Landscaping Help Rent Facility Volunteer Jobs About Contact

© Copyright 2022 Jordan Valley Water Conservancy District. All Rights Reserved [f](#) [i](#) [t](#)

ConservationGardenPark.org/plants







# Conservation Garden Park

---

8275 S 1300 W  
West Jordan







# Sego Lily Garden

1472 E Sego Lily Dr.  
Sandy

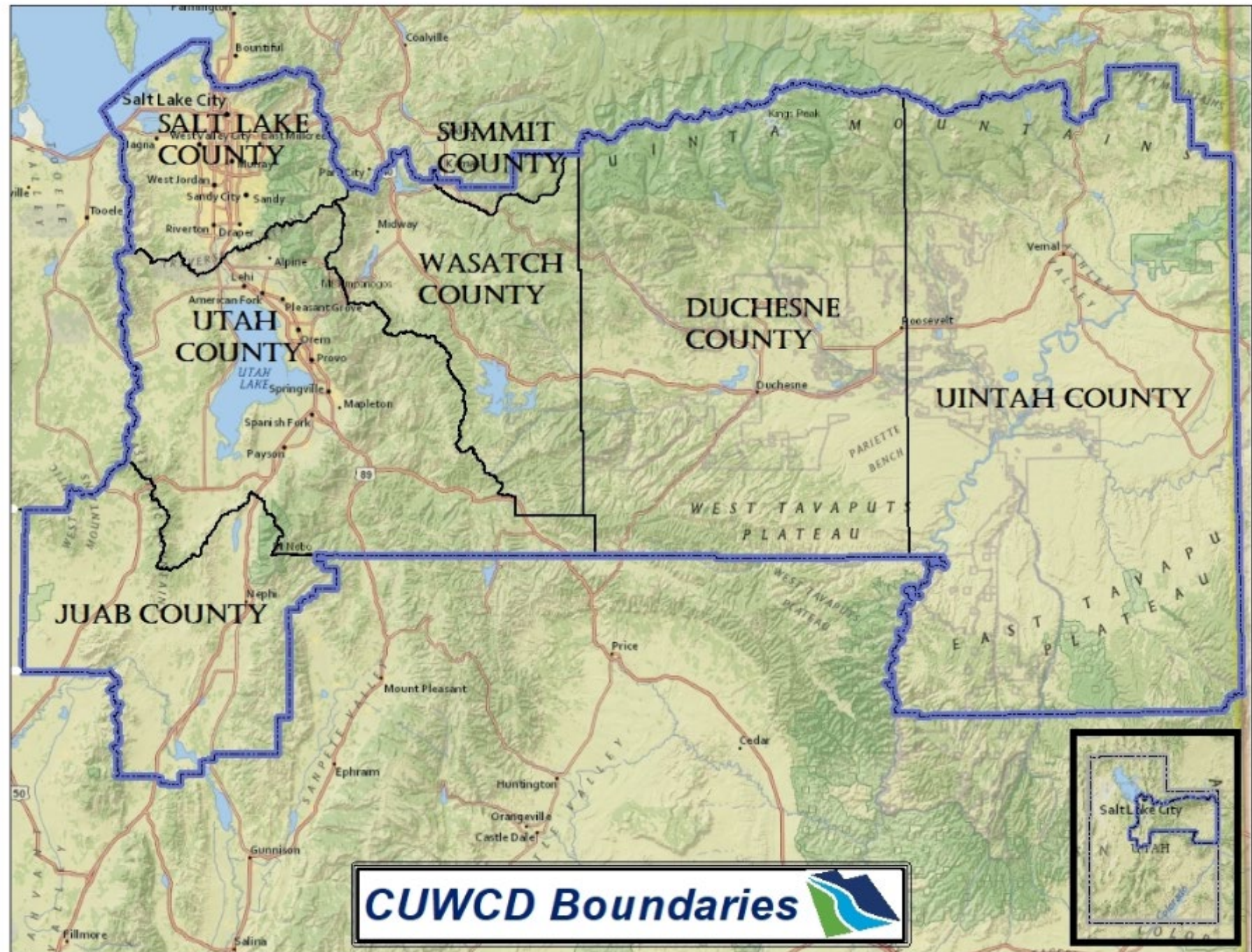






CENTRAL UTAH WATER  
CONSERVANCY DISTRICT

801-226-7171

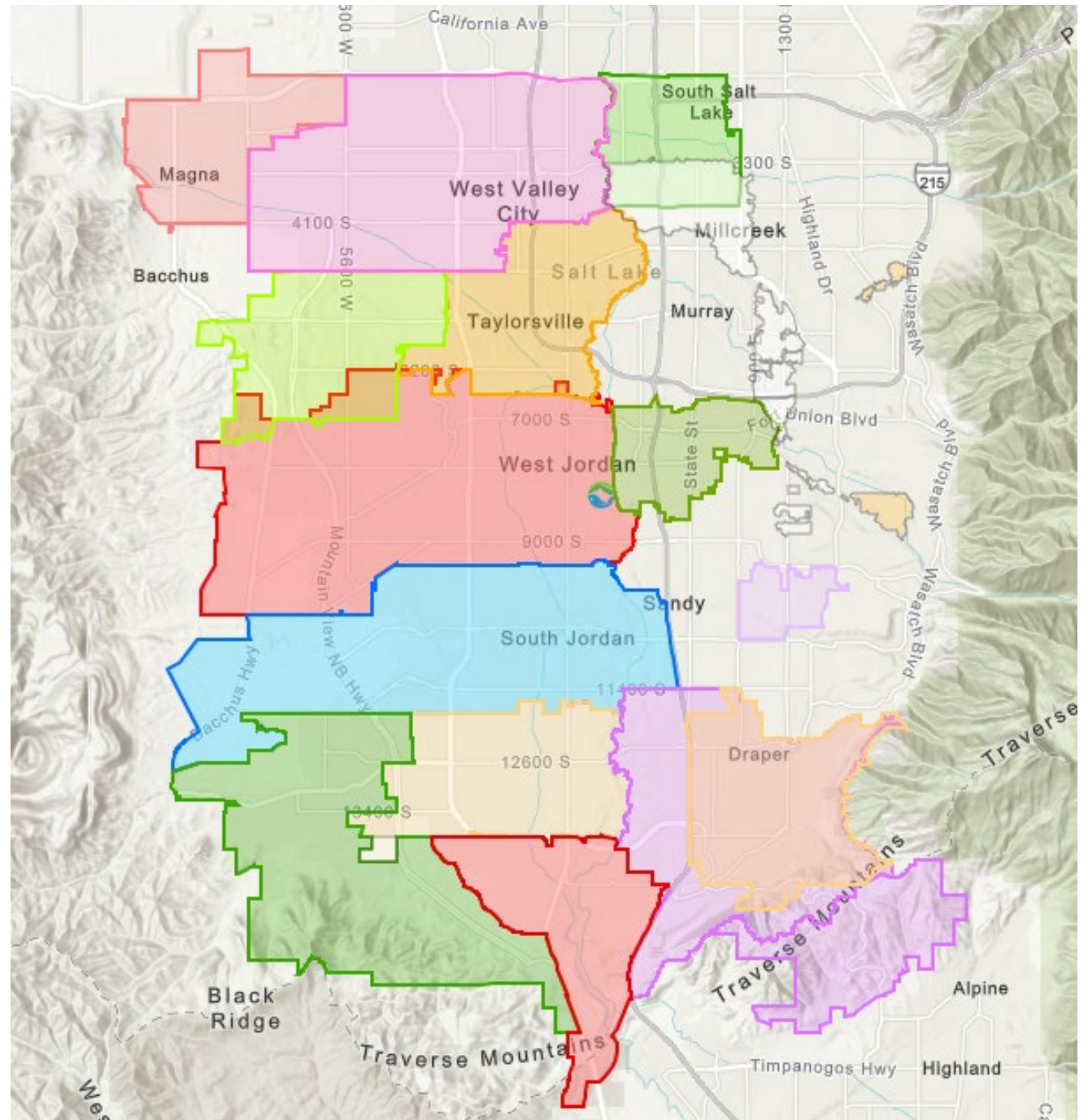






**JORDAN VALLEY WATER**  
CONSERVANCY DISTRICT

801-256-4401







### Landscape Incentive

Yard irrigation accounts for up to 70% of household water use. Earn up to \$3/sqft for removing grass on your property (residential or commercial) and replacing it with waterwise landscaping. See eligible cities [here](#).

[Learn more](#)



### Smart Controller

Get paid up to \$75 when you purchase and install a WaterSense-labeled smart controller that adjusts the water your yard gets based on local weather and yard conditions. All Utahns are eligible.

[Learn more](#)



### Toilet Replacement

Receive up to \$100 by replacing your old toilet with a WaterSense-labeled one. Any toilet manufactured before 1994 may qualify. You may submit up to 2 toilets per application. All Utahns are eligible.

[Learn more](#)