

Archival Studies Praxis and Projects 2025

We build spaces that can grow, be reimagined, and shared

STUDIO AS WORKSHOP

We work across scales and disciplines with the ambition to realize adaptive, meaningful and responsible solutions.

Our approach begins with a contextual analysis and unfolds through prototyping, co-creation, and real-world testing.

By combining traditional craft with digital fabrication, we enable systems that support disassembly and long-term adaptation.

Each project is approached holistically, from detail to social context, always with long-term care, reuse, and repurposing in mind.

We engage clients as active partners, ensuring every solution is tailored, inclusive, and alive.



ARCHIVAL STUDIES

Established in 2018, Archival Studies is a Copenhagen-based design studio focused on adaptive architecture and its spaces.

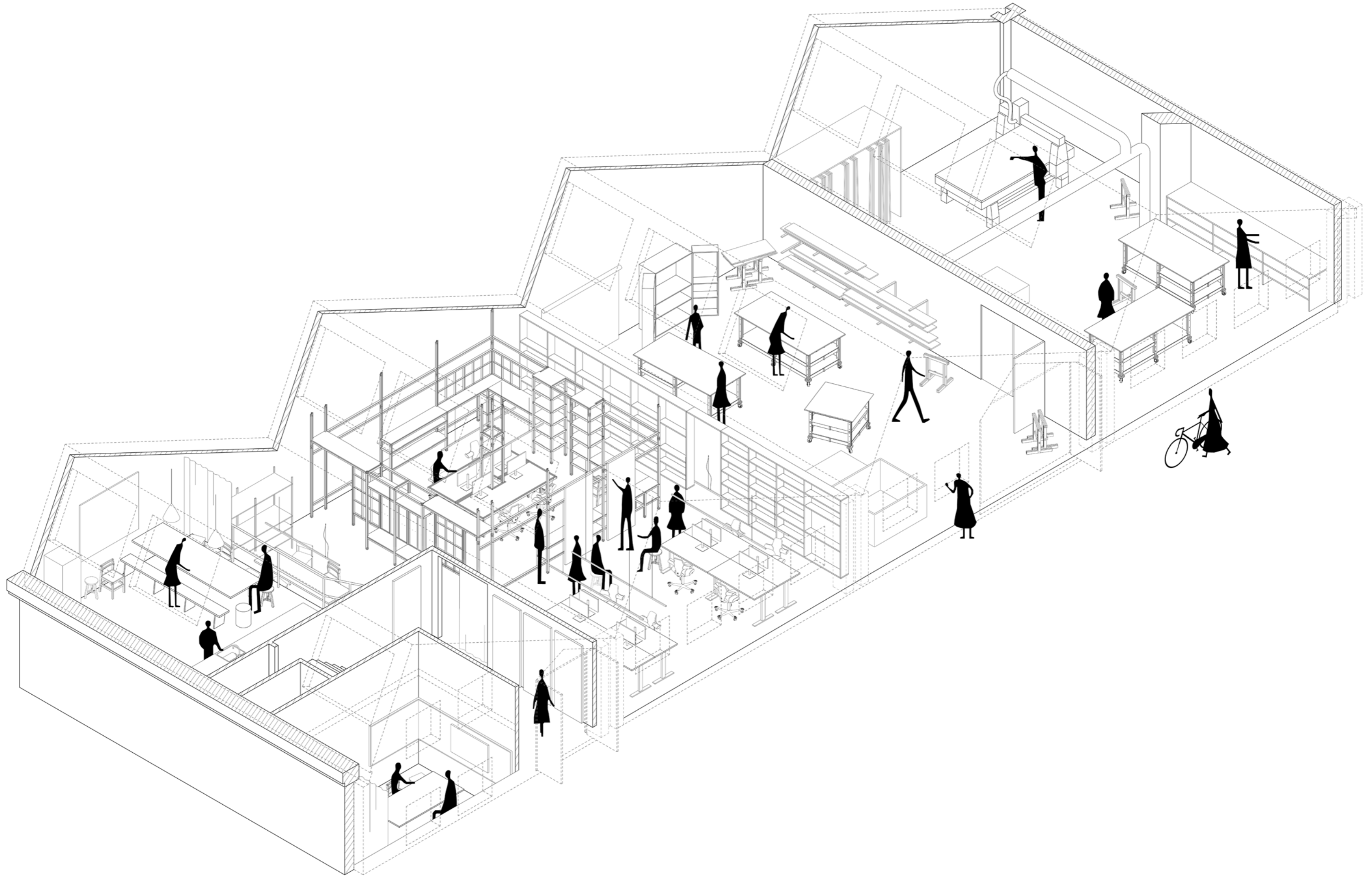
We operate from our own hybrid studio and workshop, enabling us to prototype and fabricate in-house with the ambition to push the boundaries of conventional building standards.

Here we are designing not only spaces but inventory, lighting solutions, and structural systems. All with a focus on modularity.

Our commercial projects span from consultancy, concept development, design development, 1:1 prototyping, project management, and construction administration.



OUR STUDIO

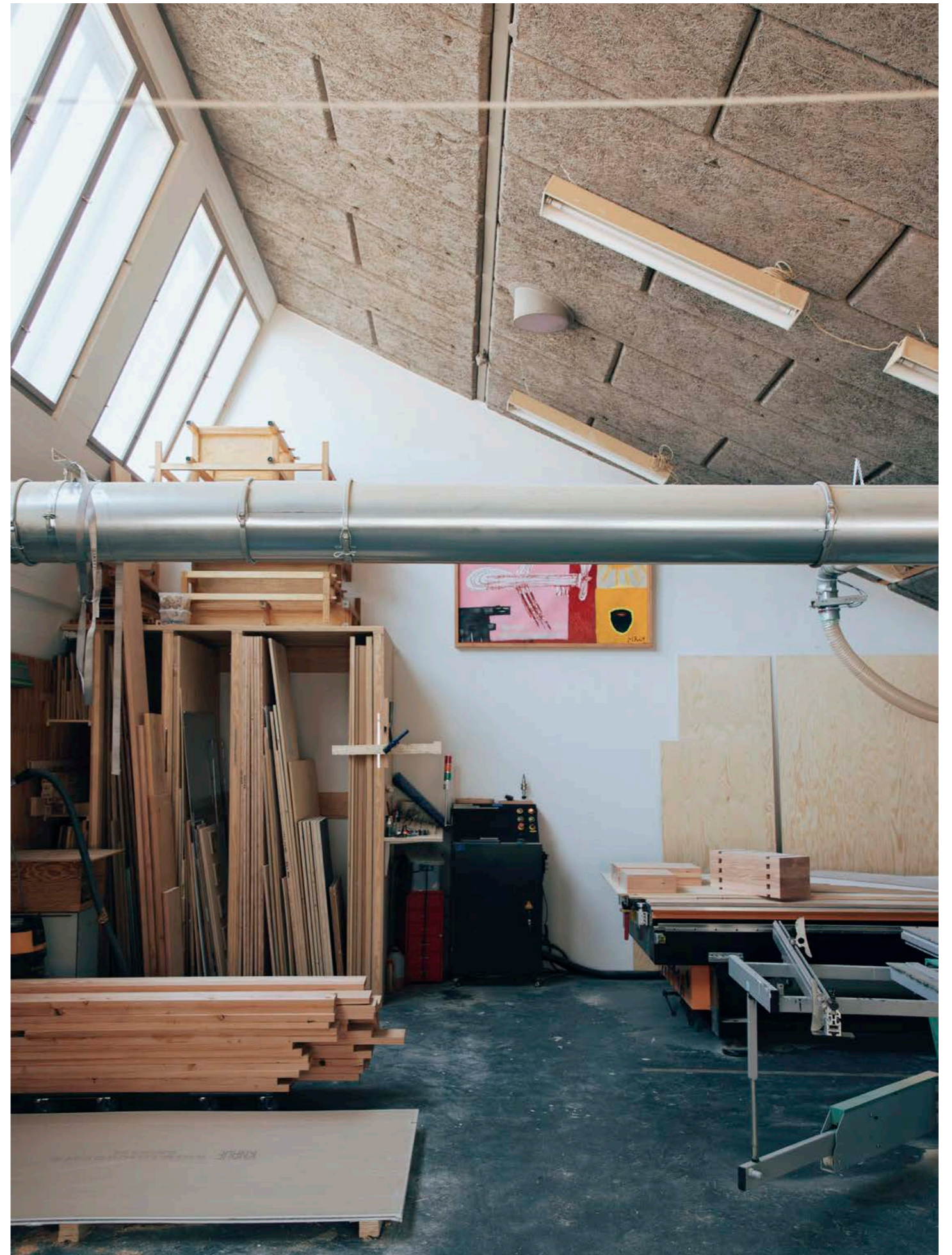






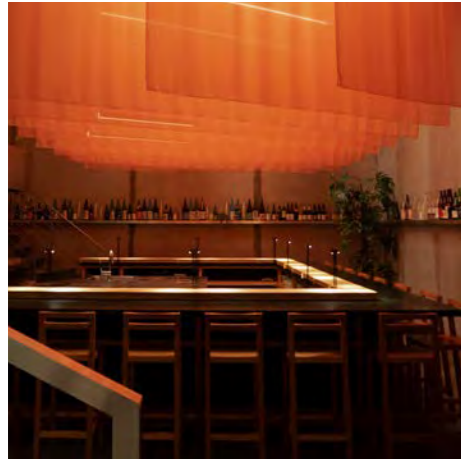






Selected Projects

HOSPITALITY



Kōnā
Restaurant, 2020



Gasoline Grill
Restaurant, 2021

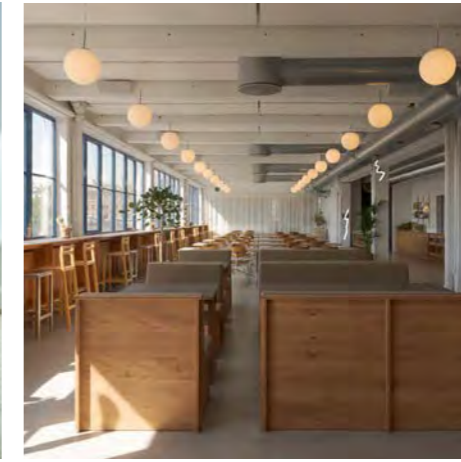


Åben Kødbyen, Furnishing design
Architecture: Pihlmann Architects, 2022

WORKSPACE



Private Office
Furnishing design, 2021



Playdead, Office
Interior, 2025

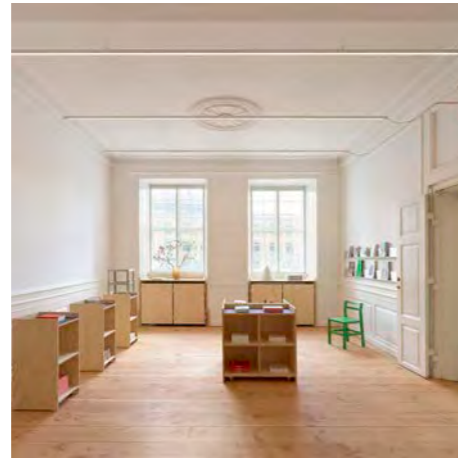


Trifolium, Office
Interior, ongoing

CULTURAL



Reset Materials
Exhibition Design, 2023



Gammel Strand Kiosk
Interior, 2024



SMK Welcome Desk, Entrance hall
Interior, ongoing

RETAIL



Arkitel København, Retail and workshop
Interior



Rockfon, Display System
Repurposable display system, 2023



D Line, Display System
Repurposable display system, 2024

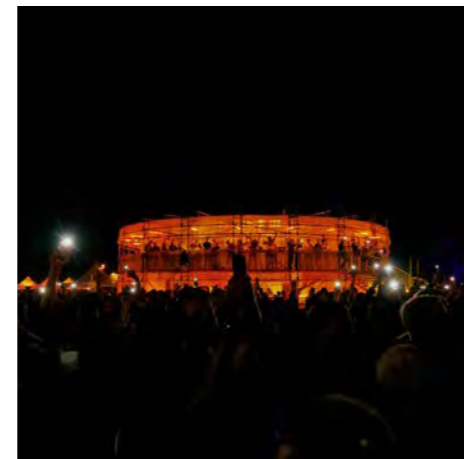
COMMUNITY



Spor10
Interior, Social activation, 2023



Vores Sted
Fælles tegnestue, 2025

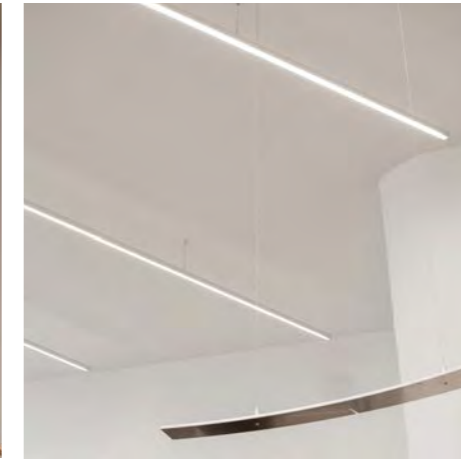


Syd for Solen Festival
Pavilion and bar, 2024+25

SYSTEMS AND PRODUCTS



Standard Kitchen System
2024



Linear Light System
2022



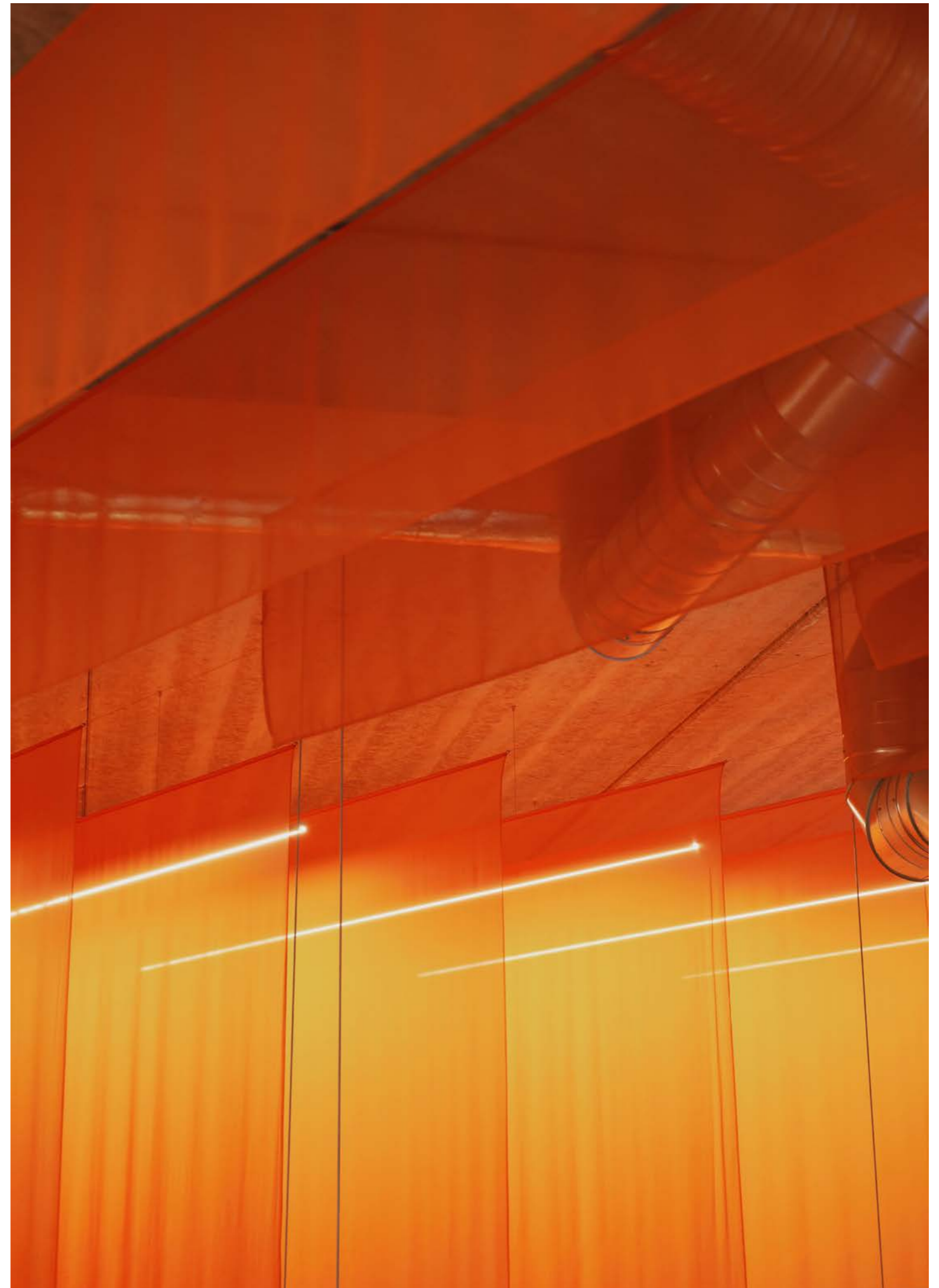
Alu Furniture System
2023

INTERIOR 06 _ KŌNĀ

Kōnā's interior unfolds in two distinct spaces. Guests first step into the intimate Izakaya, where a soft, low textile ceiling creates a relaxed atmosphere. As they descend the stairs, the space expands dramatically, revealing the Omakase Bar with its soaring height.

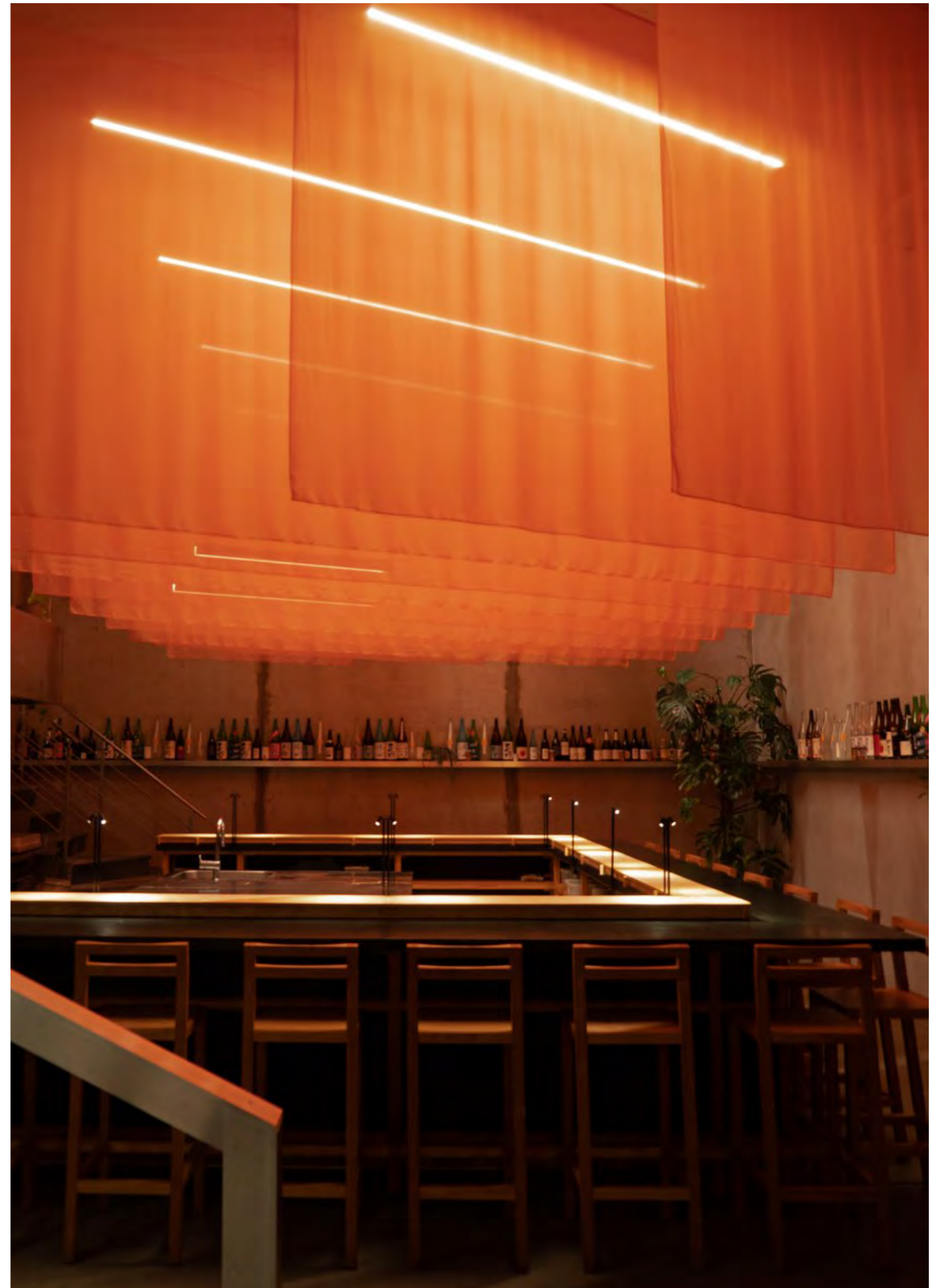
Suspended textiles and carefully designed lighting soften the concrete's rawness while giving the space a distinct identity. As guests move through, translucent orange textiles shift in appearance, dissolving into an atmospheric cloud of color. This interplay of light and material infuses warmth into the cool concrete, creating a space that feels both stimulating and inviting.

PROJECT TYPE: Restaurant Interior
CLIENT: Philipp Inreiter and Carlsberg Byen
LOCATION: Copenhagen, DK
DATE: 2020
PHOTOGRAPHY: Niklas Adrian Vindelev / Archival Studies





Archival Studies



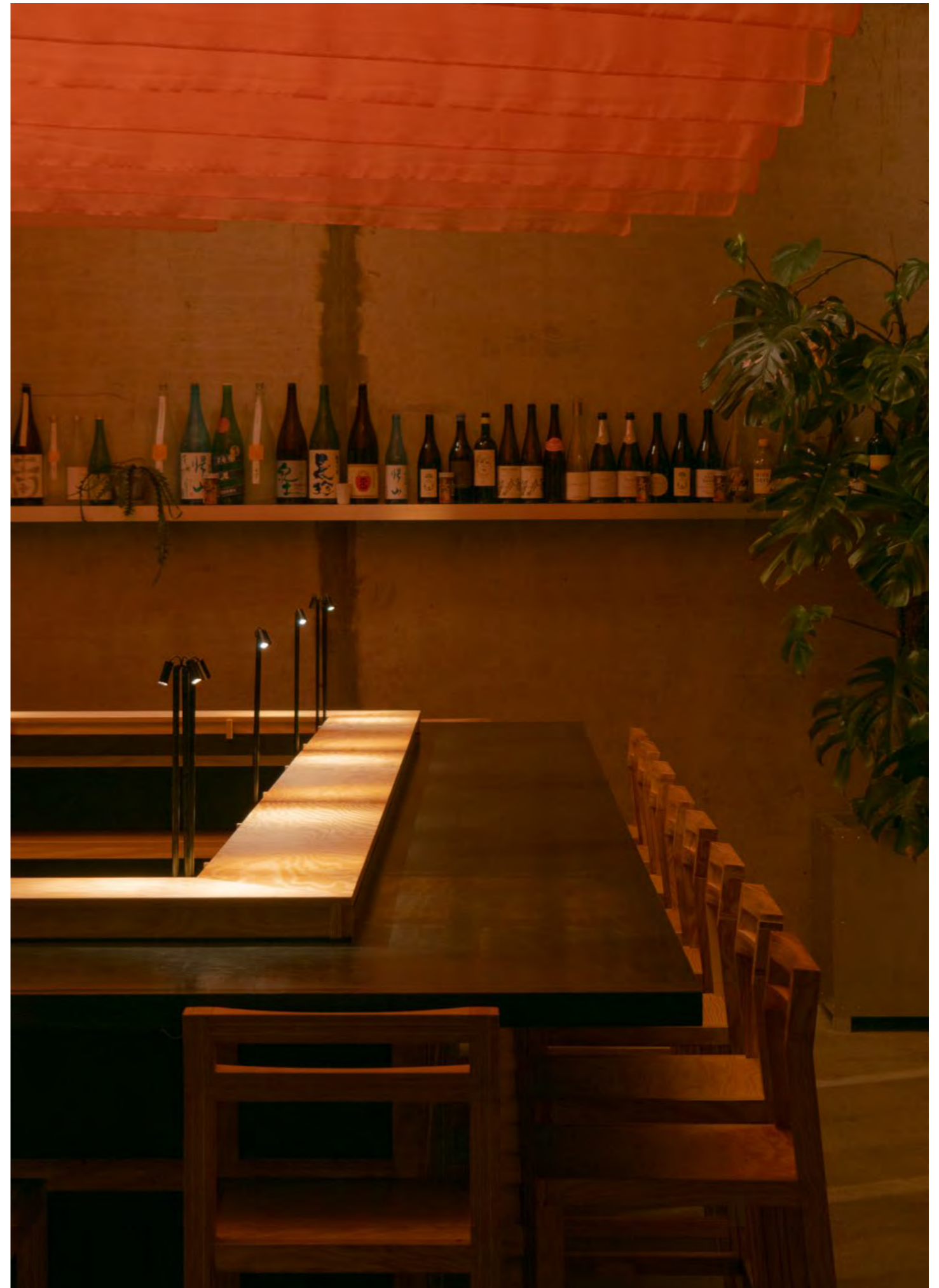
@archival_studies

archivalstudies.net



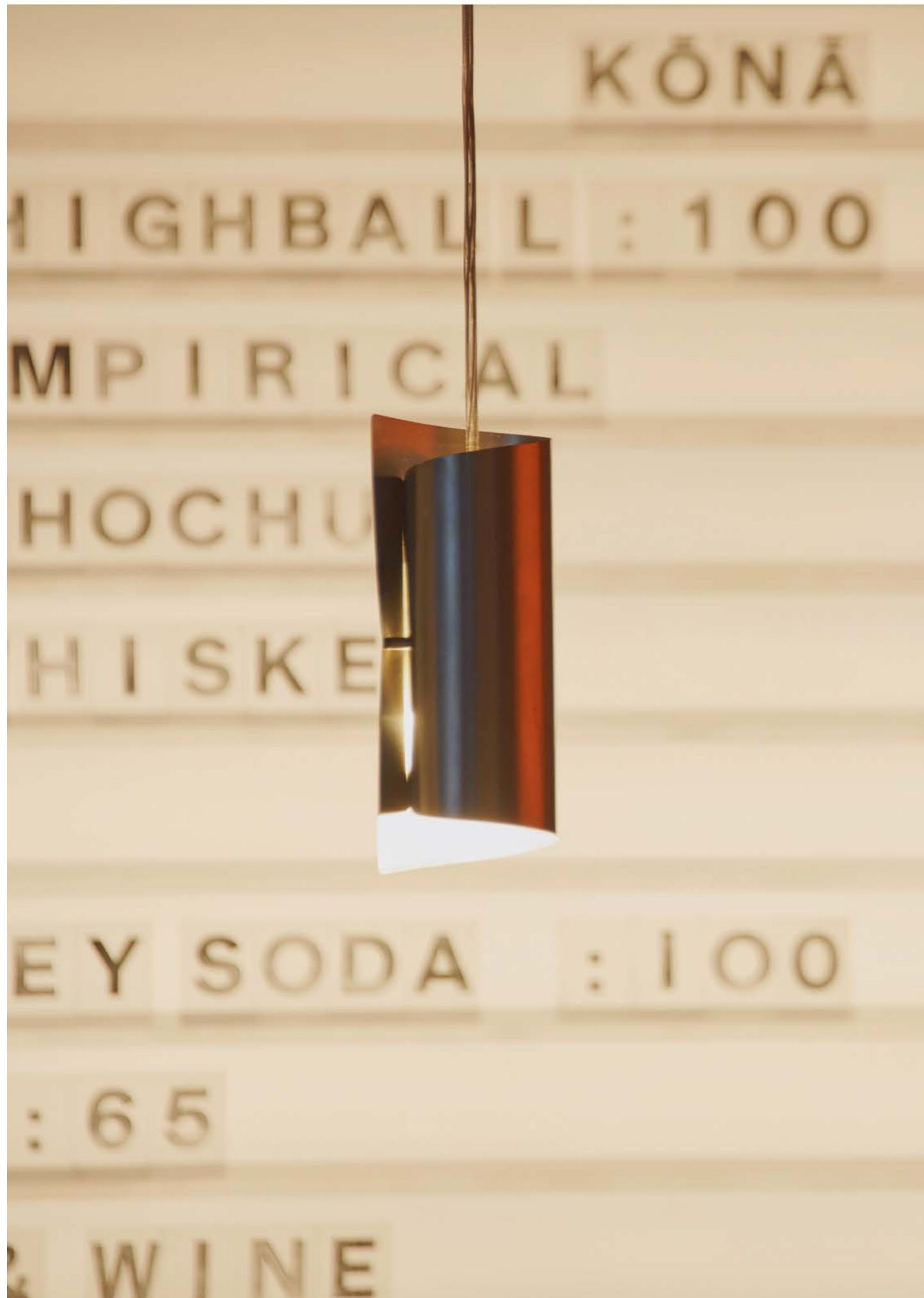


Archival Studies



@archival_studies

archivalstudies.net

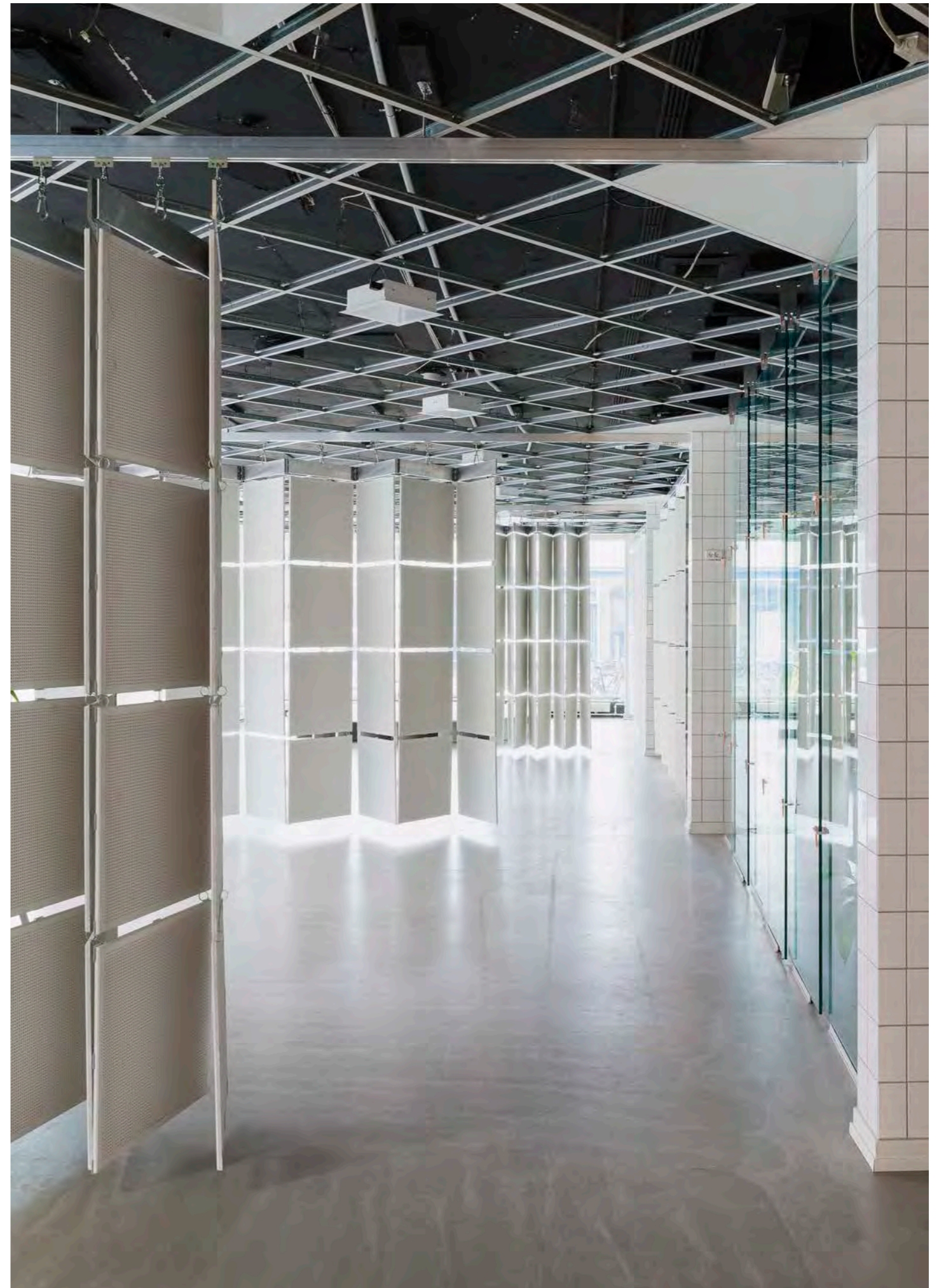


INTERIOR 05 _ ART HUB

The transformation of Art Hub Copenhagen points towards a general path for how recycling can be rethought in architecture. When resources are not consumed, but regenerated into value-creating elements, recycling is no longer a necessary evil, but the very catalyst of form and intention.

Collaboration with Pihlmann Architects

PROJECT TYPE: Office Interior
CLIENT: Art Hub Copenhagen
LOCATION: Copenhagen, DK
DATE: 2020
PHOTOGRAPHY: Hampus Berndtson
COLLABORATORS: Pihlmann Architects

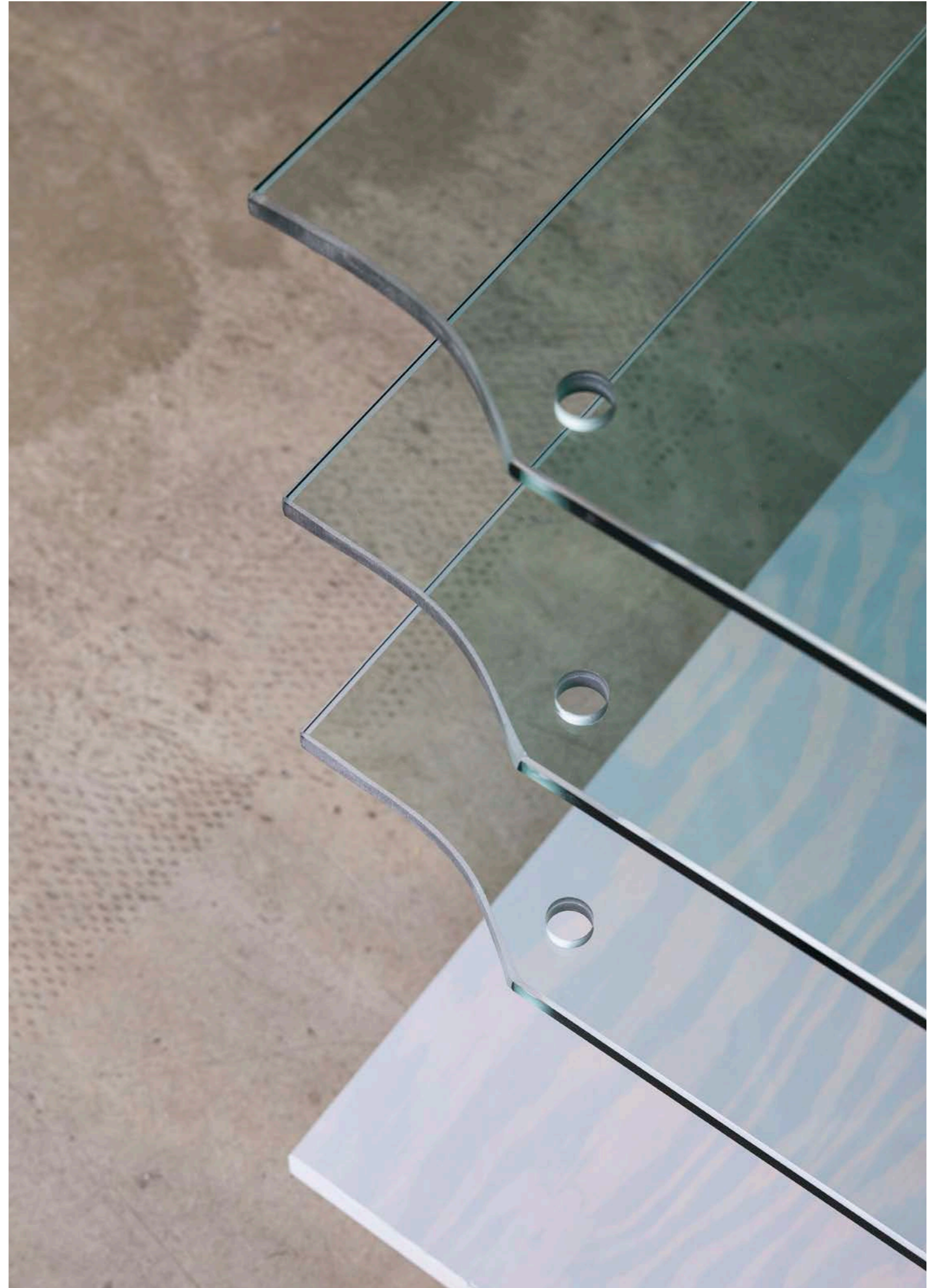








Archival Studies



@archival_studies

archivalstudies.net



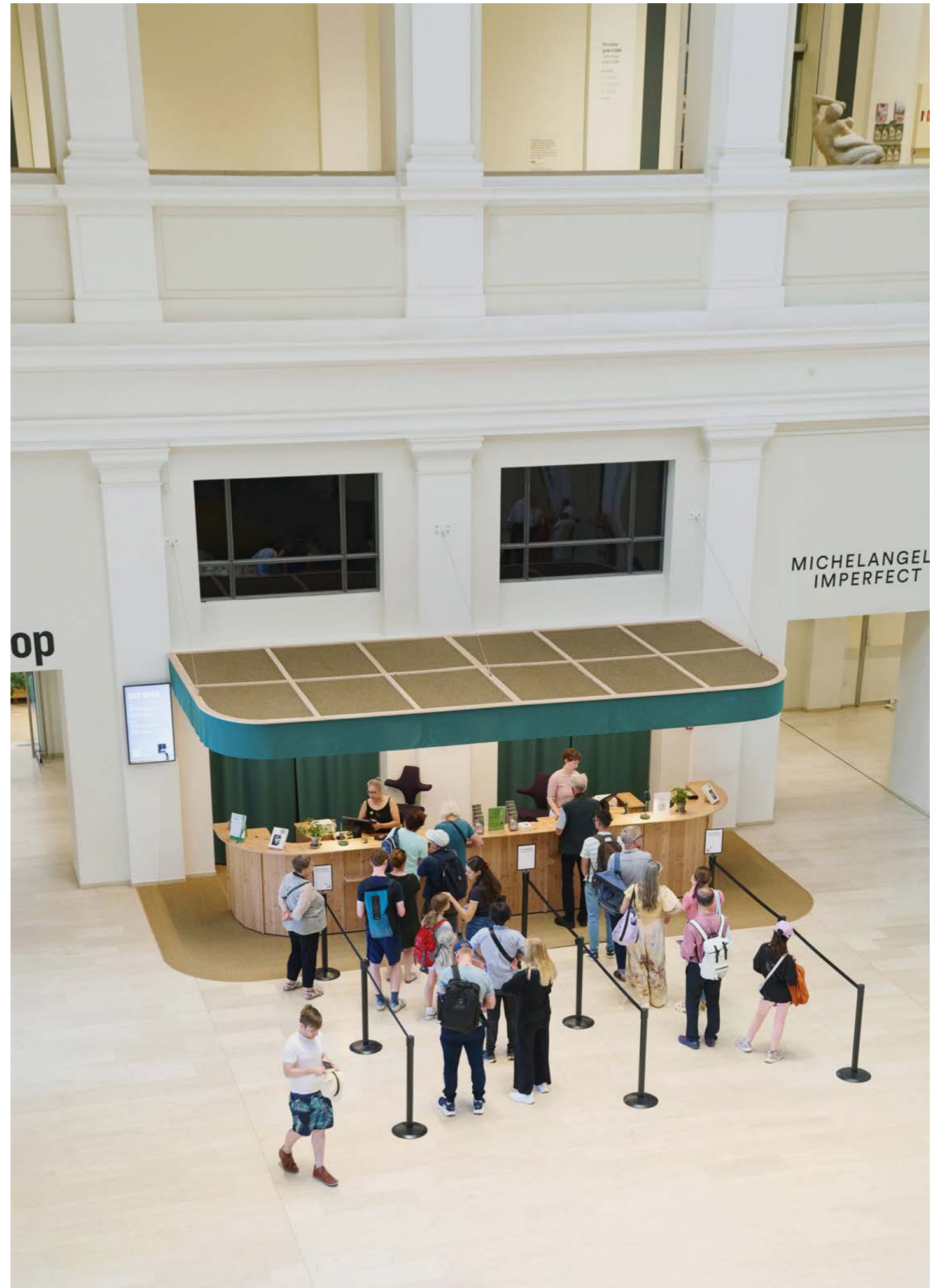
INTERIOR 15 _ SMK ENTRANCE HALL

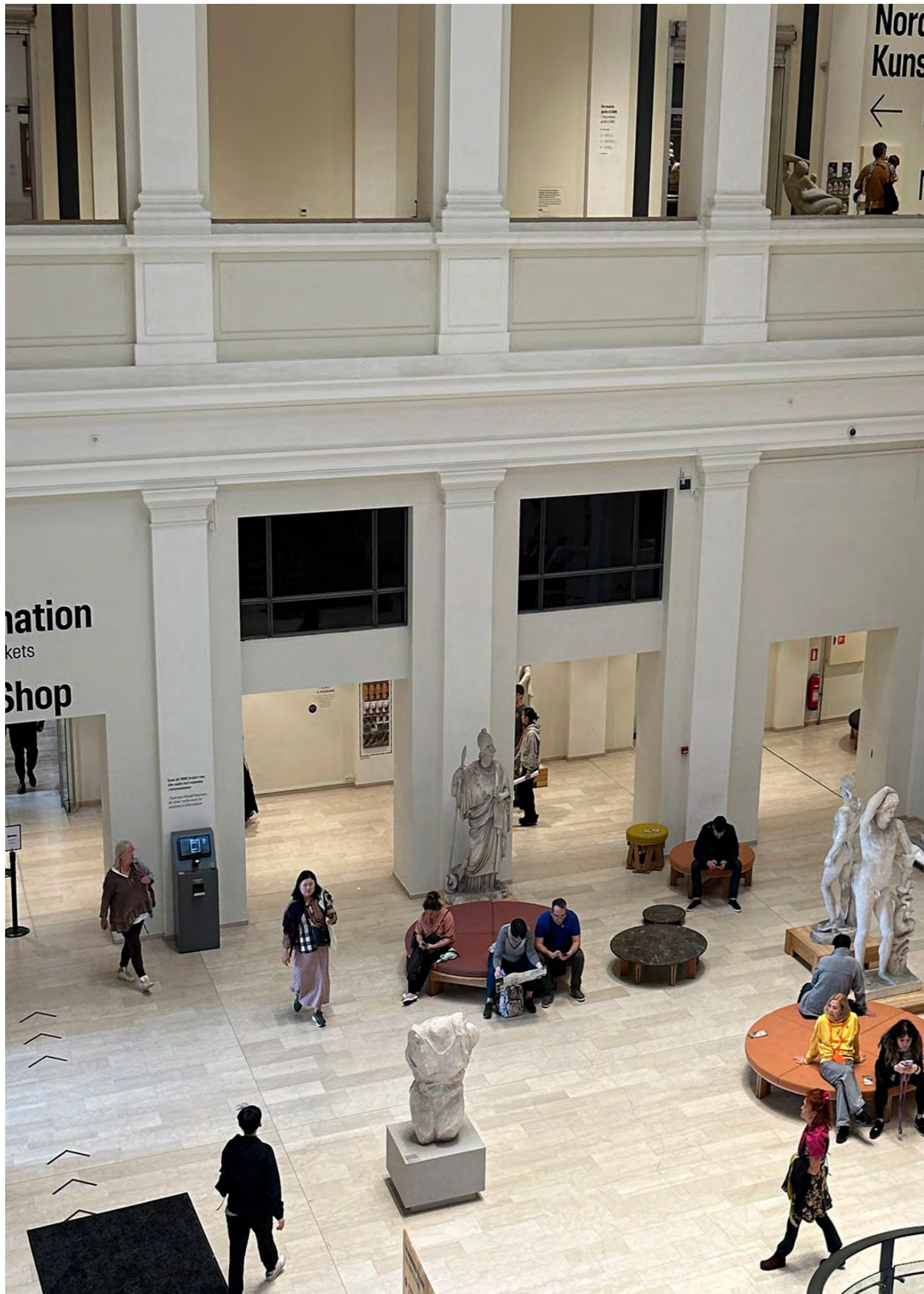
Positioned at the heart of SMK's grand entrance, the welcome desk serves both as a ticket counter and a visual guide for visitors.

The warm, understated counter, combined with a carpeted floor and a calming textile backdrop, introduces texture and tactility. This design creates a welcoming, human-scale point of access within the museum's vast entrance hall.

The central counter consists of five flexible modules. Castors on each module allow easy repositioning, enabling the layout to evolve with SMK's needs. Panels are not glued but attached with screws, making repairs, customization, and reuse possible.

PROJECT TYPE: Interior Furnishing
CLIENT: Statens Museum for Kunst
LOCATION: Copenhagen, DK
DATE: 2024 - Ongoing
PHOTOGRAPHY: Niklas Adrian Vindelev







Nordisk Kunst
/ Danish and Nordic

Nordic Art

Nordisk Kunst

SMK Shop

**MICHELANGELO
IMPERFECT**

DET SKER

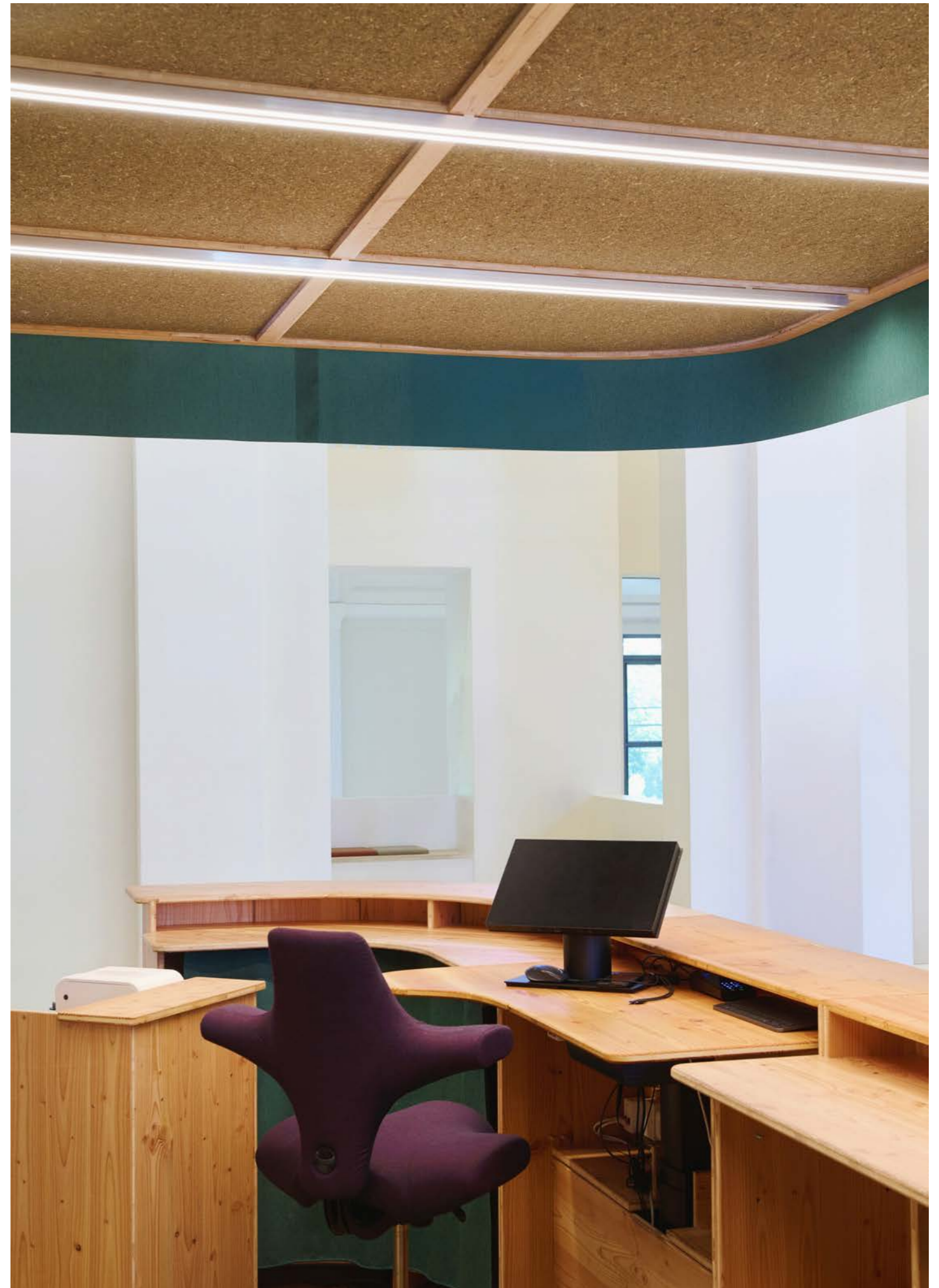
Priser

Admission	10000
1 Year Ticket	50000
6 Visits	30000
50% Discount	25000

**1 YEAR
1 TICKET
6 VISITS
50% DISCOUNT**

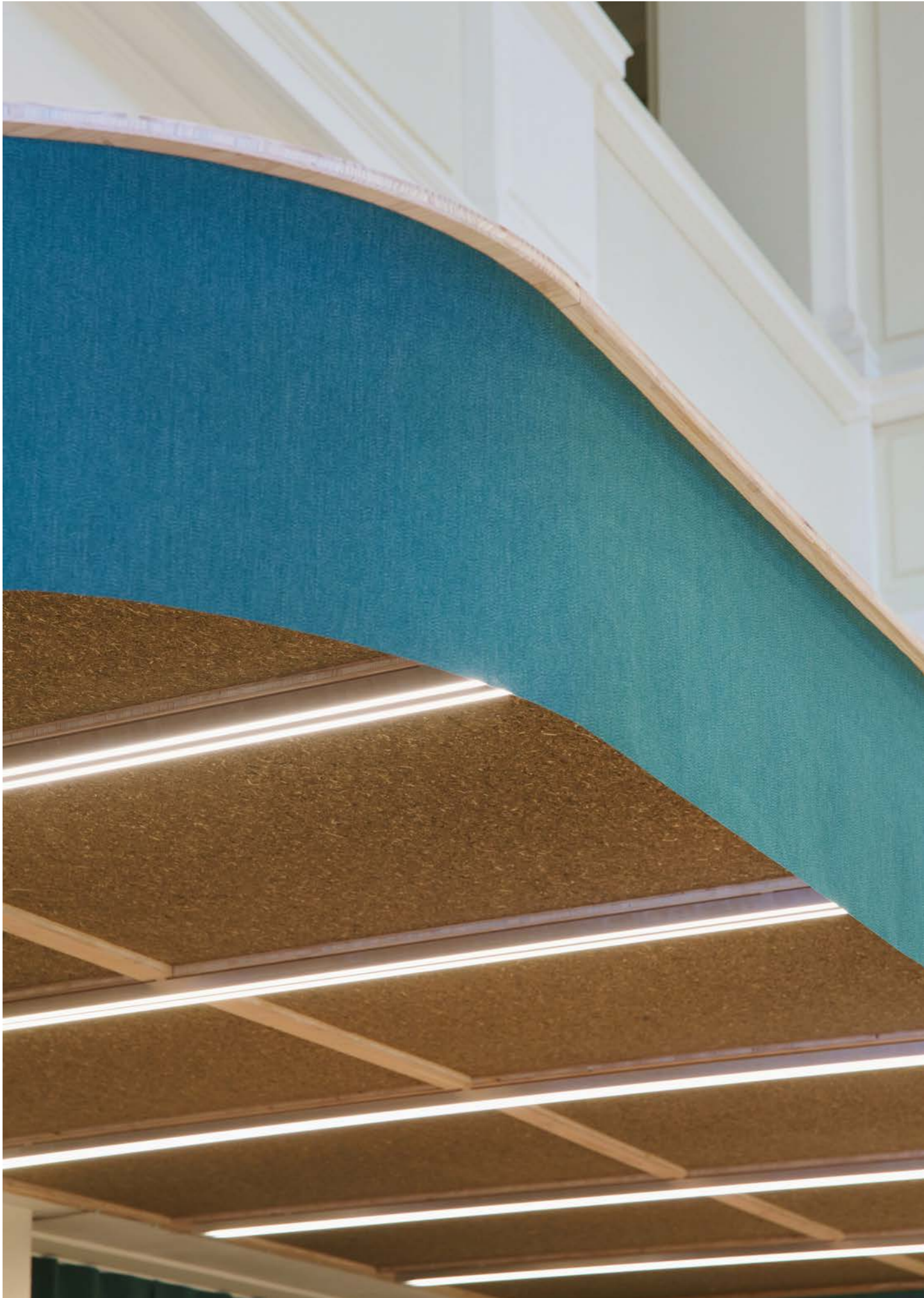


Archival Studies



@archival_studies

archivalstudies.net



BUILDING 01 _ VORES STED

‘Vores Sted’ (Our Place) celebrates the 25th anniversary of the Danish philanthropic foundation Realdania by providing 150 social gathering spaces free of charge to communities and associations across Denmark.

The pavilions are designed with a philosophy of fostering community while minimizing environmental impact and will be constructed primarily from recycled and biogenic materials, available in four different typologies.

The goal of the project is to provide versatile and inviting meeting places for Denmark’s self-organized communities. Designed as simple pavilions with a distinctive gabled roof, they are both recognizable and archetypal in Denmark’s built environment.

Our involvement: Until Construction Phase

PROJECT TYPE: Building
CLIENT: Realdania
LOCATION: Denmark
YEAR: 2024, ongoing
COLLABORATORS: pihlmann architects, Cobe and ReVærk







Archival Studies



@archival_studies

archivalstudies.net



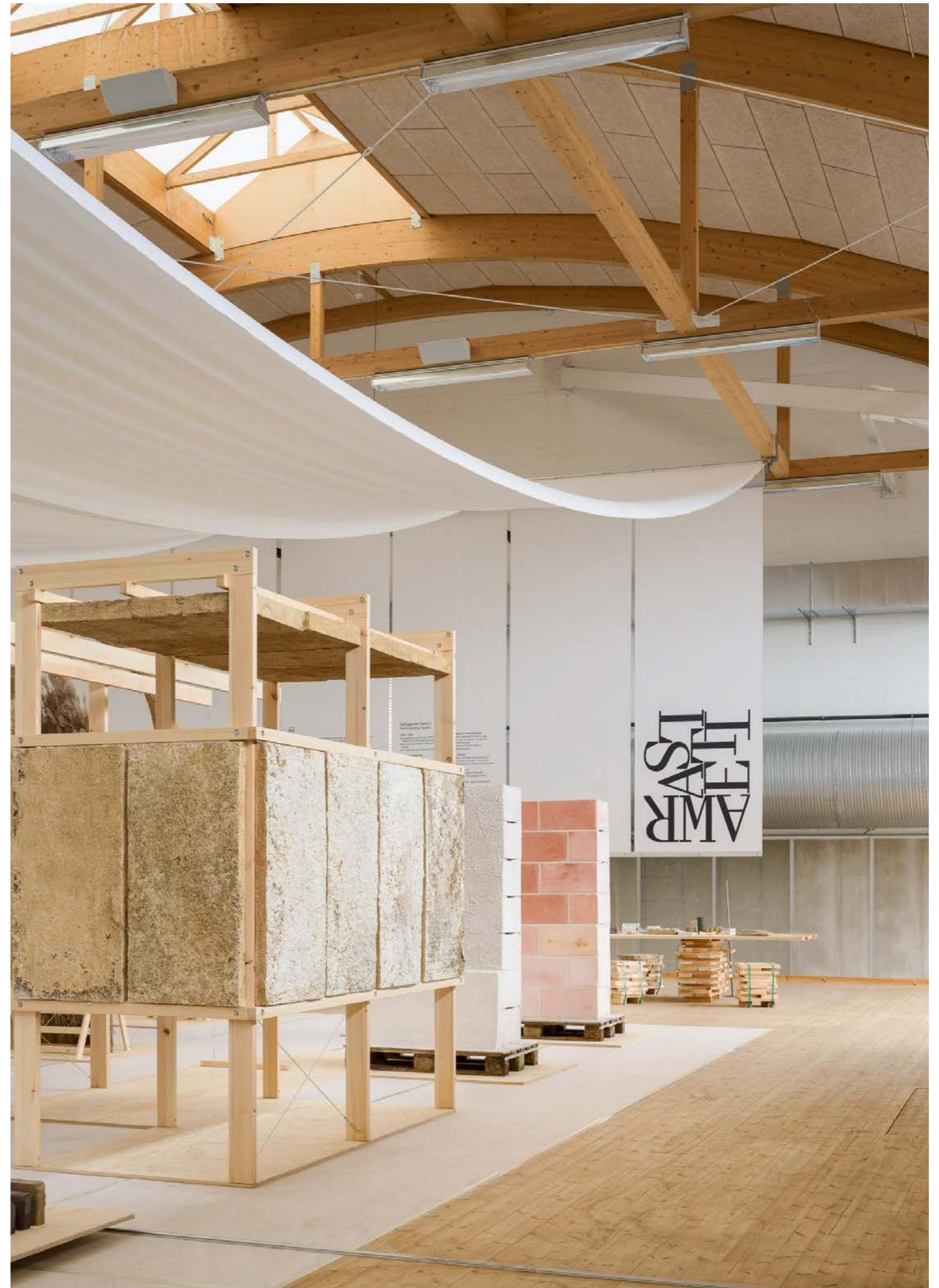


EXHIBITION 05 _ RESET MATERIALS

Archival Studies was commissioned to plan and execute the design of the exhibition Reset Materials. The layout of the space was intentionally designed as a cityscape, mirroring the applications of the featured pieces within the architectural realm. Highways, streets, and pathways wind through the exhibition's high-rises, monuments, arcs, and squares, enabling close engagement with the displayed items and offering a layered landscape that as a window into a potential future.

A central element of the design concept was minimizing waste. All materials were maintained at their standard sizes, avoiding the need for cutting or modification. This approach ensured that all exhibition materials could be repurposed once the show concluded.

PROJECT TYPE: Exhibition Design
CLIENT: Akademisk Arkitektforening, Copenhagen Contemporary
COLLABORATION: Curator Chrissie Muhr, Graphical design Studio Atlant
LOCATION: Refshaleøen, Copenhagen, DK
DATE: 2023
PHOTOGRAPHY: Hampus Berndtson







Archival Studies



@archival_studies

archivalstudies.net



SYSTEM 03 _ D LINE

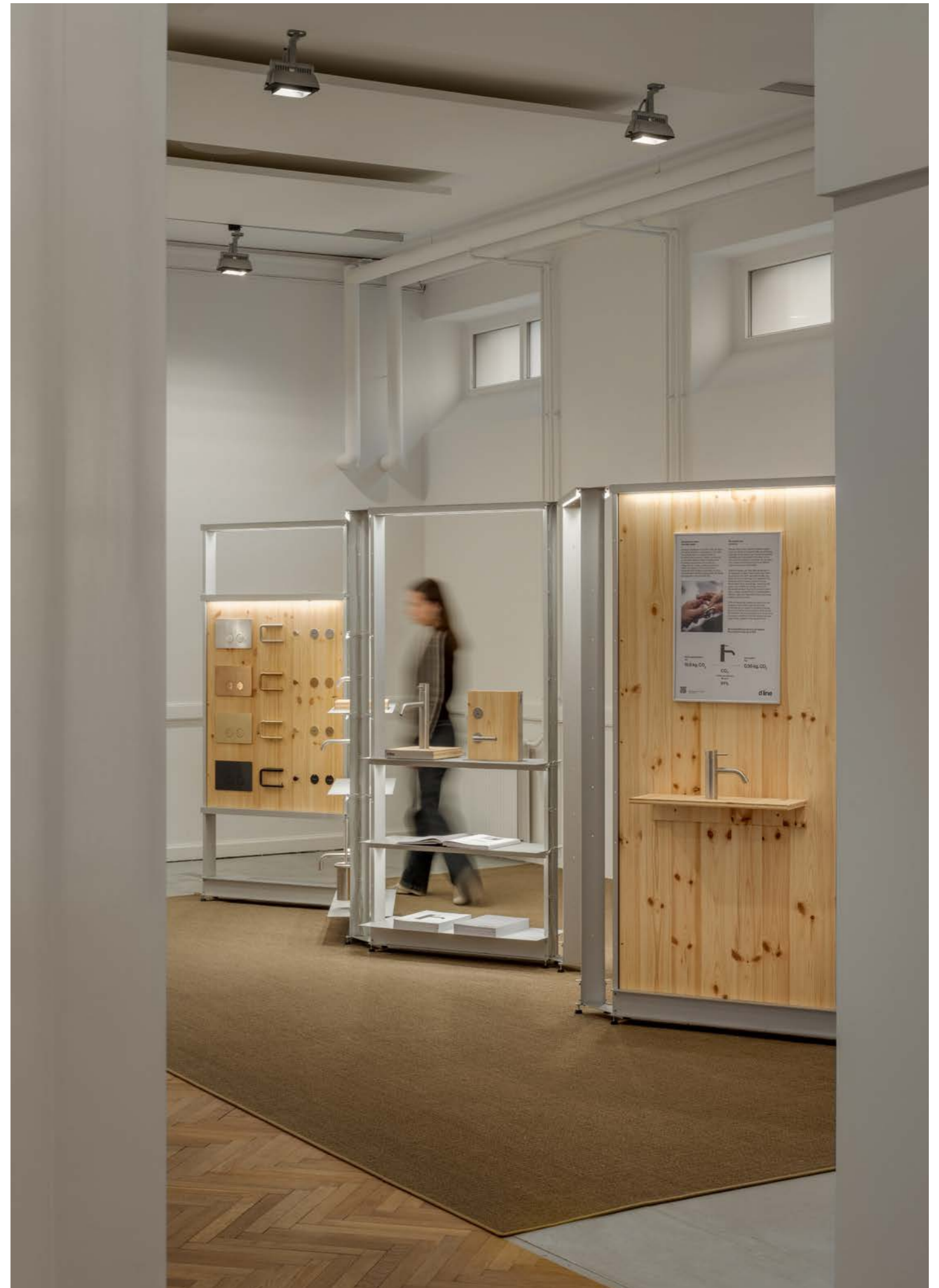
Aligning with d line's principles of timeless and long-lasting design, Archival developed a new display system for the brand's range of architectural hardware products.

The system was designed for disassembly for diverse exhibition environments, responding to the brand's commitment to the reuse and refurbishment of materials.

The structural principle of a 120 degree rhythm offers a spatial display system, suggesting spaces of use and guides the visitors through a curated journey. Discovering brand values to exploring products.

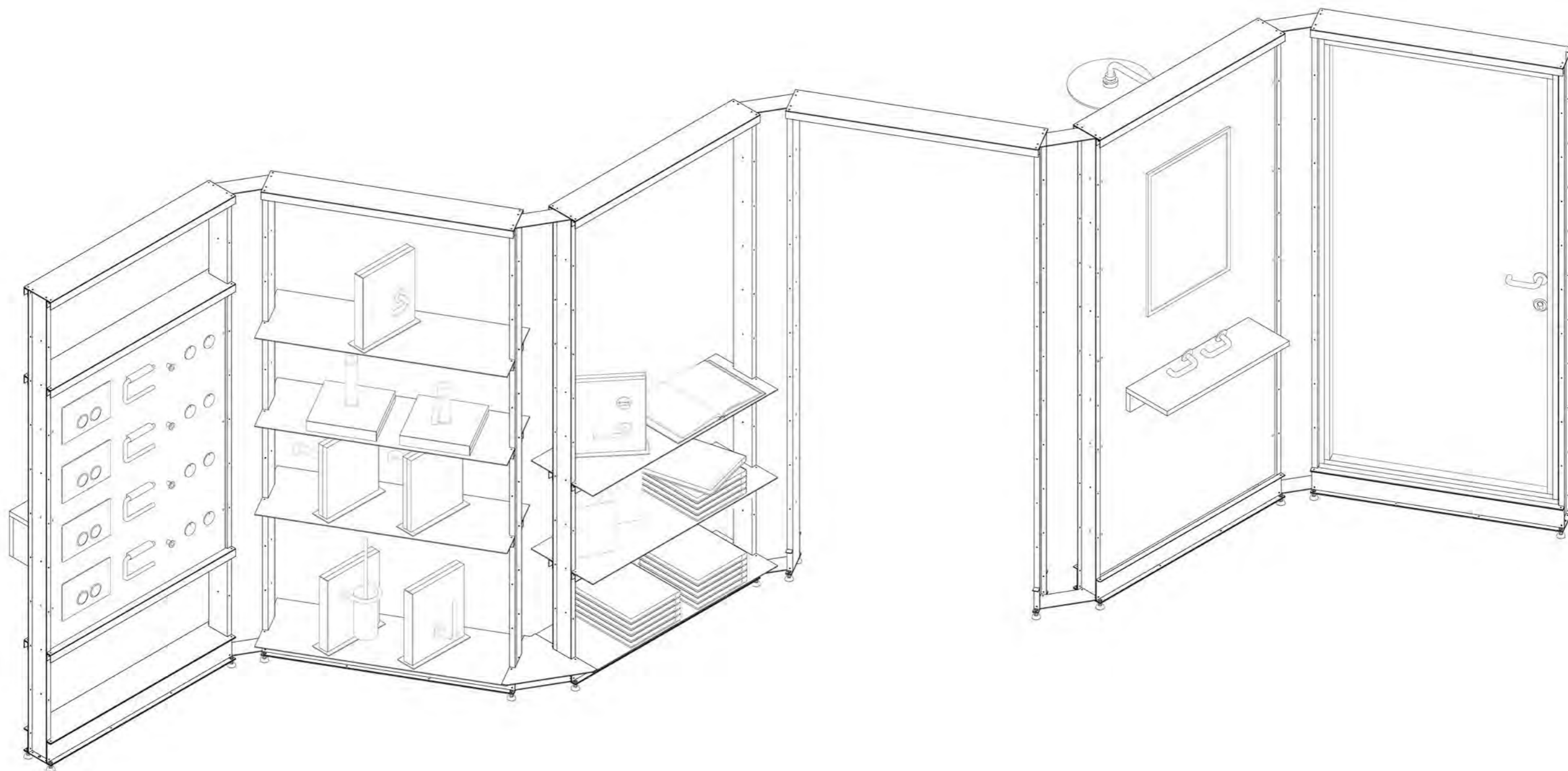
PROJECT TYPE: Retail System, Exhibition System
CLIENT: d line
LOCATION: Copenhagen
DATE: 2024
PHOTOGRAPHS: David Stjernholm

Archival Studies



@archival_studies

archivalstudies.net







Archival Studies



@archival_studies

archivalstudies.net



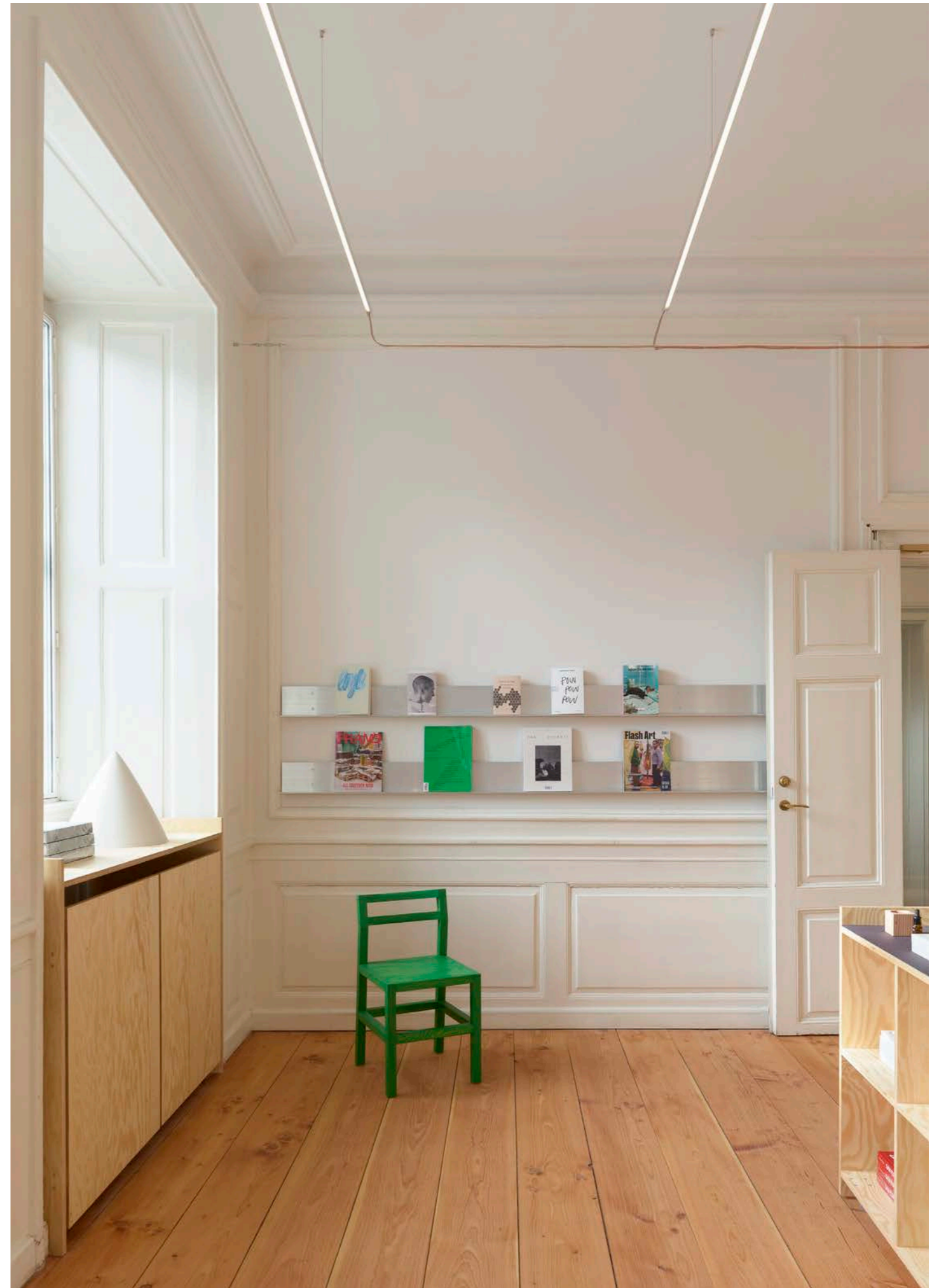
INTERIOR 14 _ GAMMEL STRAND ENTRANCE

We began by reimagining the entrance, shop, and ticket sales area, focusing on restoring the space's original character while enhancing its function. By working with what was already there, we aimed to create a more intuitive and welcoming experience for visitors.

Layers of added interiors were carefully removed, allowing the classical architecture to breathe once again. The restored wooden floorboards and exposed walls reveal the building's history while making room for new possibilities. The result is an inviting space—one that respects the past while offering the art center a dynamic platform to evolve as a vibrant cultural hub.

PROJECT TYPE: Retail, Interior
CLIENT: Gammel Strand
LOCATION: Copenhagen, DK
DATE: 2024 - ongoing
PHOTOGRAPHY: Hampus Berndtson

Archival Studies

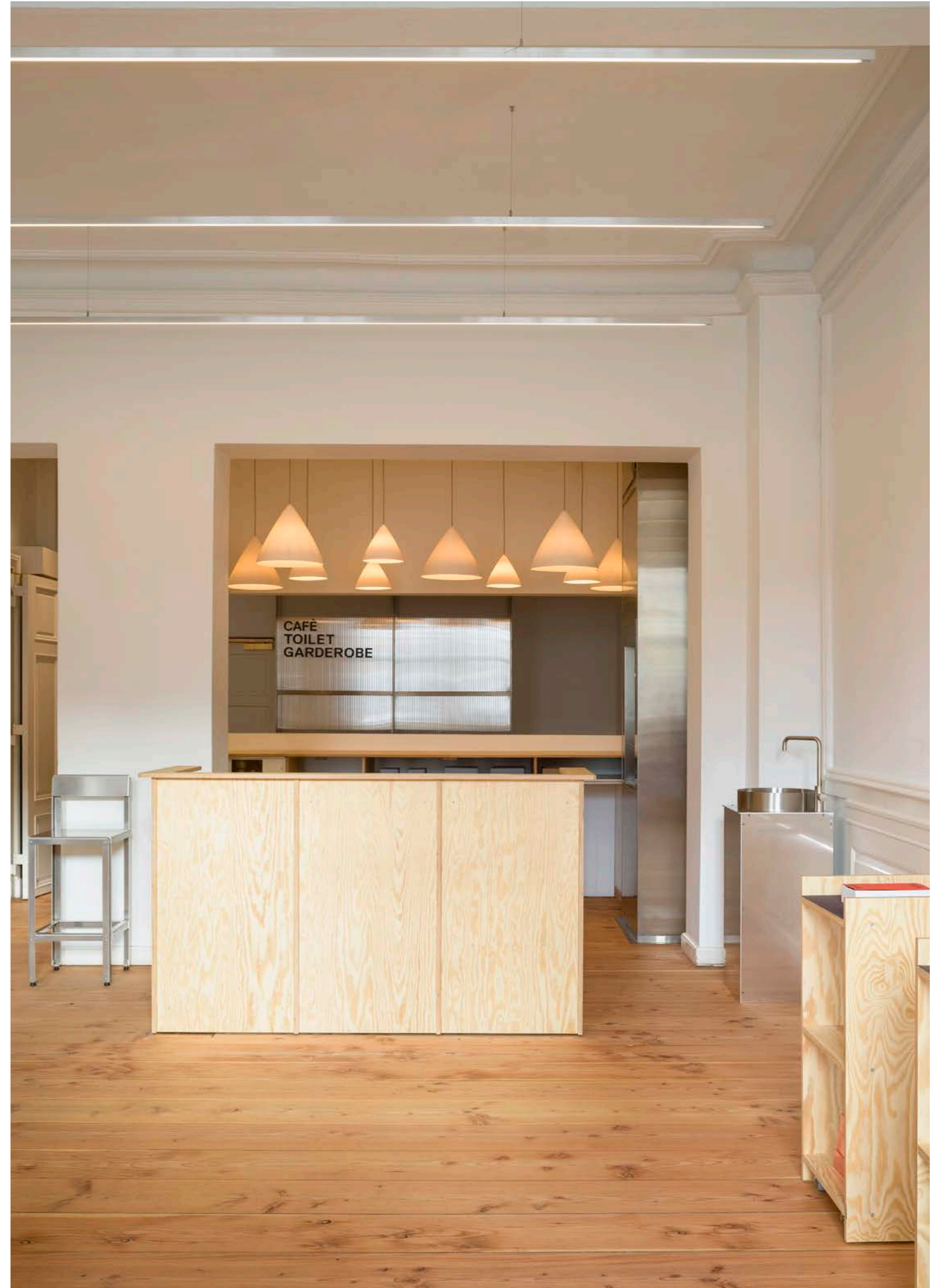


@archival_studies

archivalstudies.net









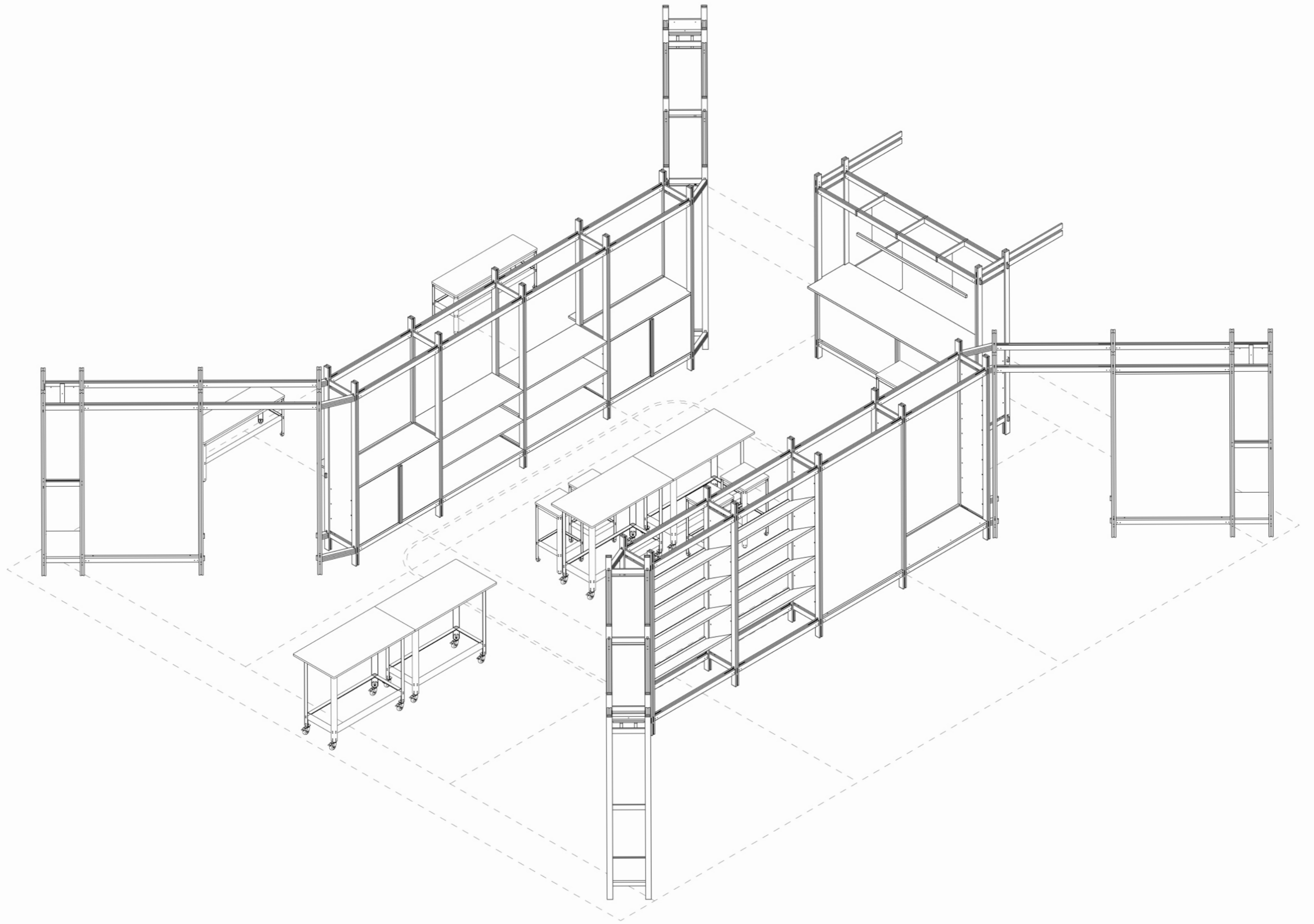
BUILDING SYSTEM _ ROCKFON

To showcase their new range of design solutions, Rockfon's modular exhibition system was designed to frame and uplift the products on display.

The structure of CNC-milled plywood was designed for disassembly to be taken apart to travel between exhibitions. This approach aims to minimize waste between events and allows the material to gain character and charm over time. The exhibition system was first implemented at Paris' Workspace Expo in 2023, and has since been repurposed for exhibitions in Amsterdam and Malmö.

PROJECT TYPE: Modular Exhibition System
CLIENT: Rockfon
LOCATION: Paris (FR), Amsterdam (NL), Malmö (SE)
DATE: 2023–2024
PHOTOGRAPHY: Studio Brinth





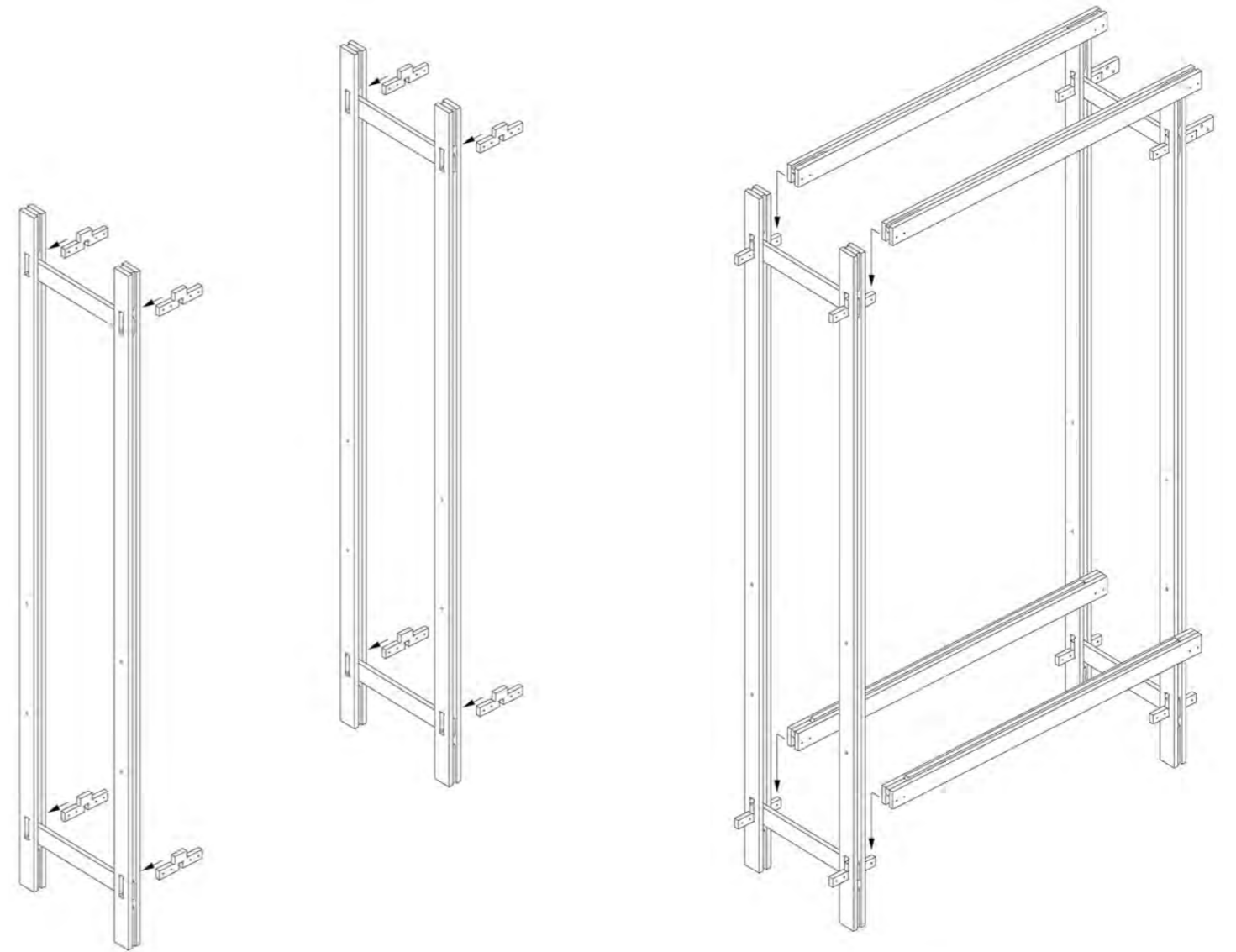


Archival Studies



@archival_studies

archivalstudies.net





INTERIOR 07 _ GASOLINE GRILL

When thinking about burger culture, the classic drive-in diners of the Western USA come to mind. These diners grew alongside the booming automotive industry and expanding infrastructure. In some Gasoline Grill locations, the use of metal, curves, and bold lighting reflects this era's streamlined, industrial aesthetic, paying homage to its practicality and charm.

At the same time, the California Light and Space movement emerged. These artists, deeply influenced by the rise of American industry—especially automobiles—focused on creating experiences rather than objects. By playing with light, space, and color, they sought to shift perception and invite people to see the world in new ways.

PROJECT TYPE: Restaurant Interior
CLIENT: Gasoline Grill, Tivoli
LOCATION: Tivoli Gardens, Copenhagen, DK
DATE: 2021
PHOTOGRAPHY: Hampus Berndtson











INVENTORY _ THORAVEJ29

We were engaged in a line of loose inventory for Bikuben Foundations community hub, Thoravej29. All designed and produced in-house.

For the outdoor furniture and planterboxes were realized in 'green' undried wood to reduce energy consumption while unlocking new aesthetic possibilities that stay closer to the raw state of the material.

For the high chairs around the interior of the building we intentionally included knots, wind cracks, sapwood, and planer marks, demonstrating how both natural and human-made irregularities can serve as examples of sustainable practice and inviting details in an increasingly perfected world.

For the workshop we designed a fully designed for disassembly workshop table that was also open-sourced.

PROJECT TYPE: Research, Workspace inventory

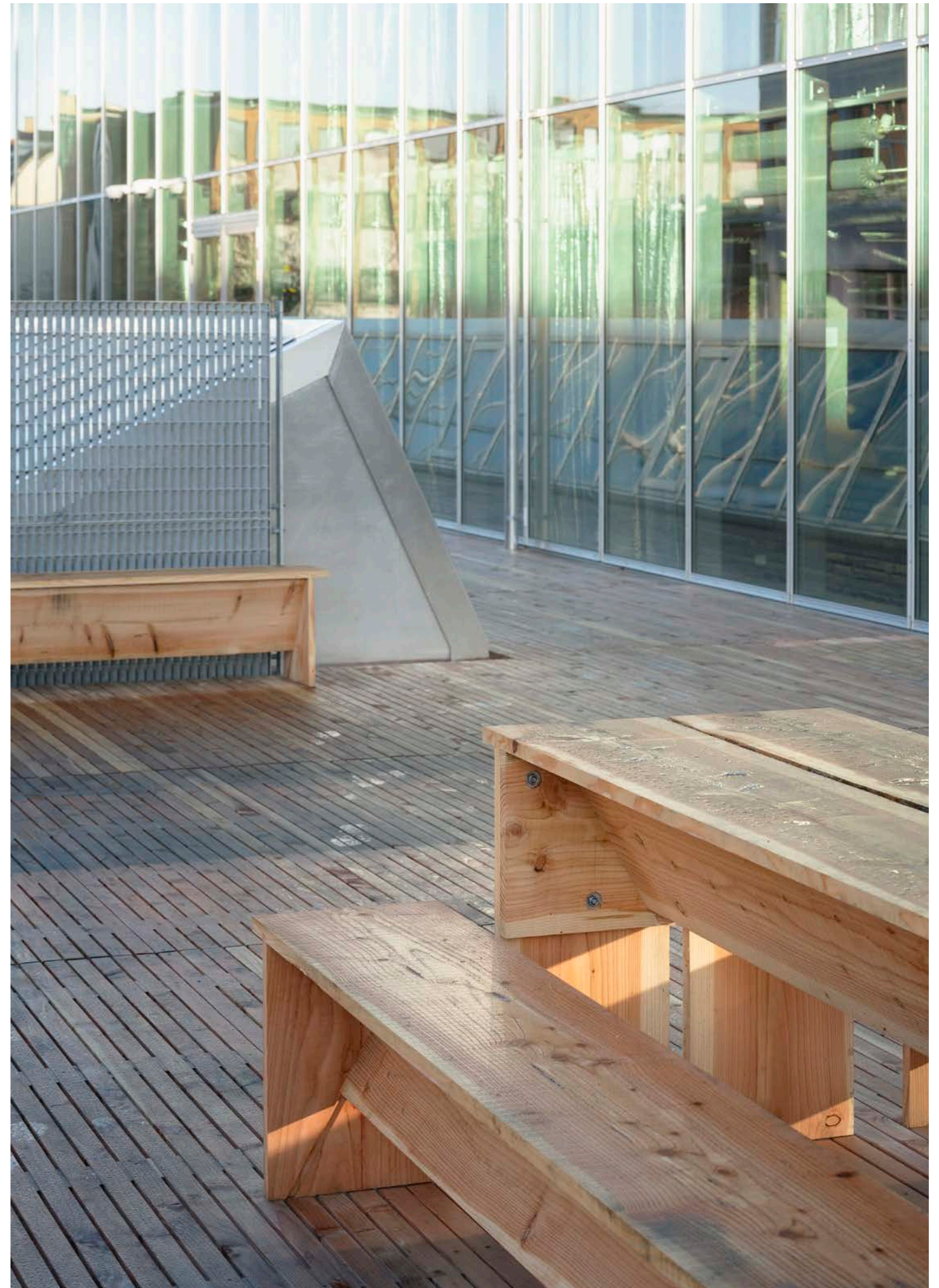
CLIENT: Bikuben Foundation

LOCATION: Thoravej 29, Copenhagen, DK

DATE: 2025

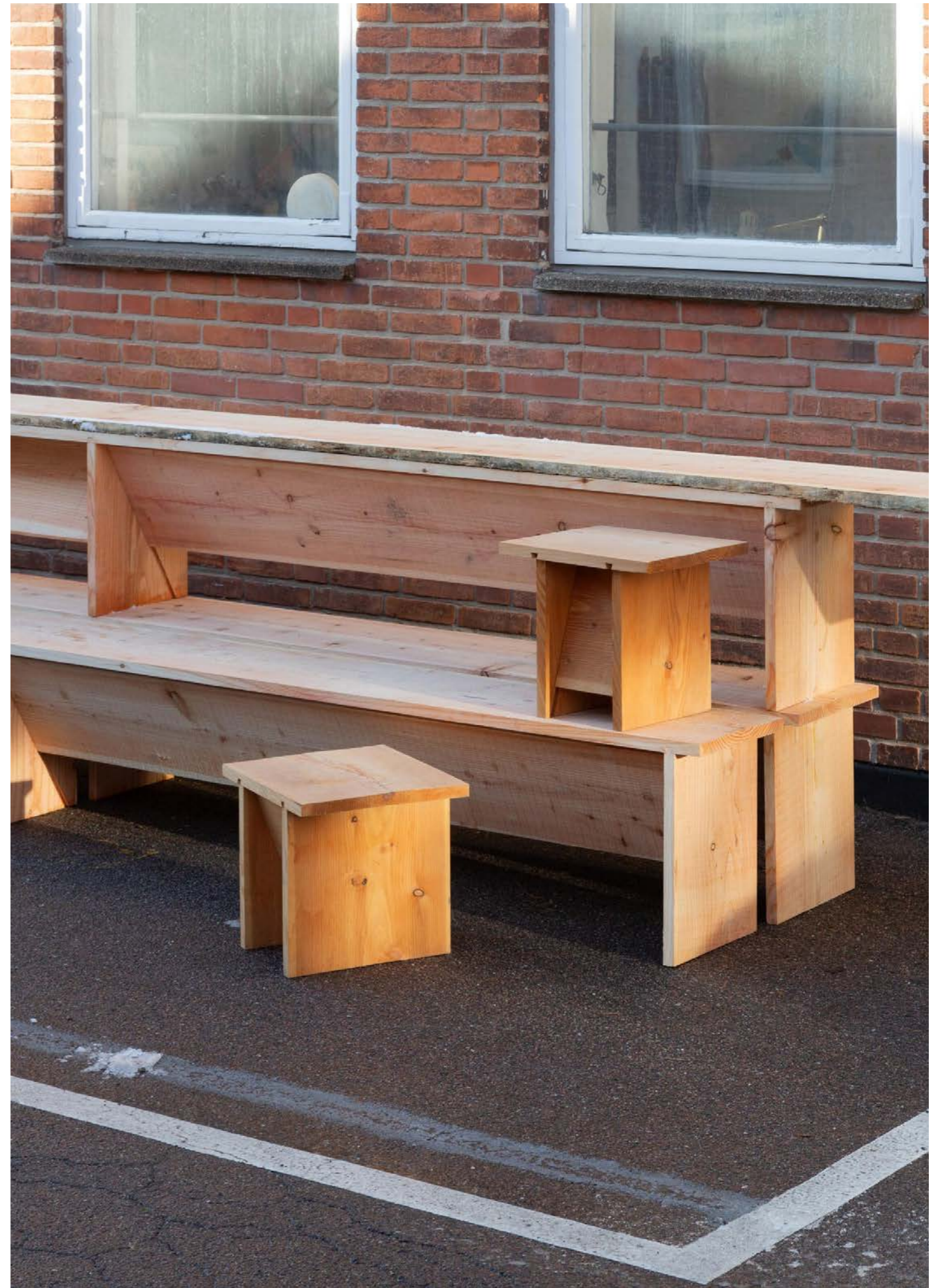
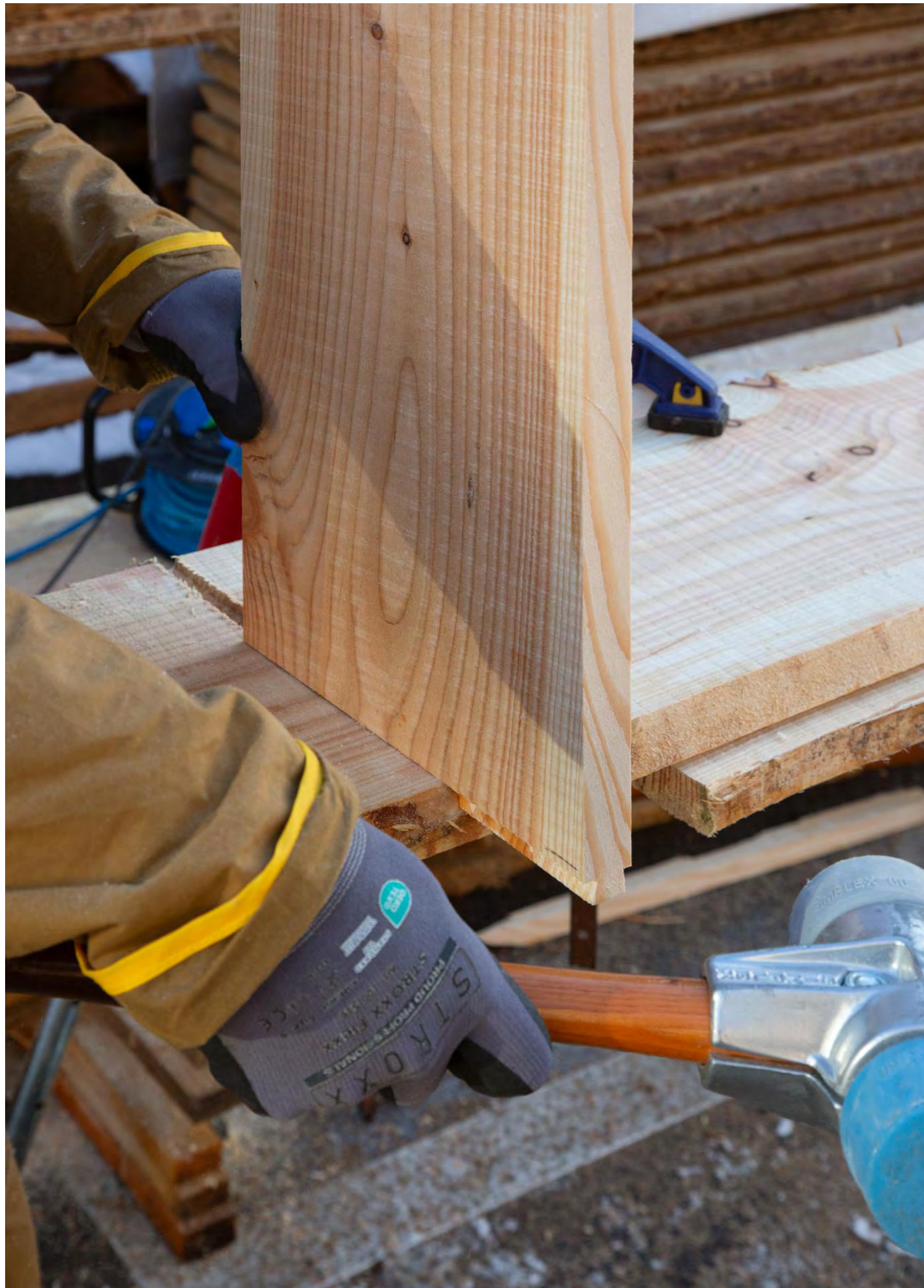
PHOTOGRAPHY: Hampus Berndtson

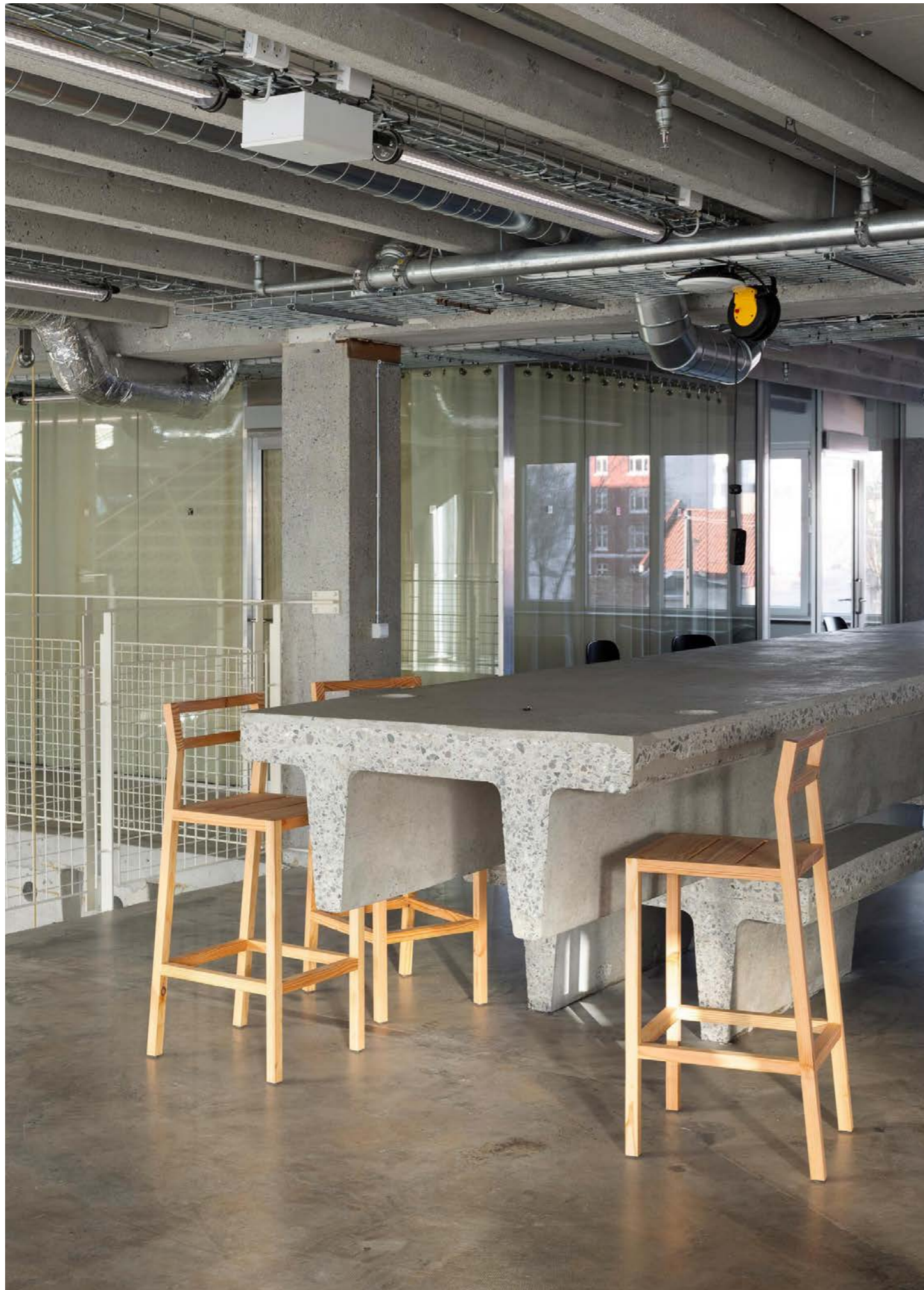
Archival Studies



@archival_studies

archivalstudies.net







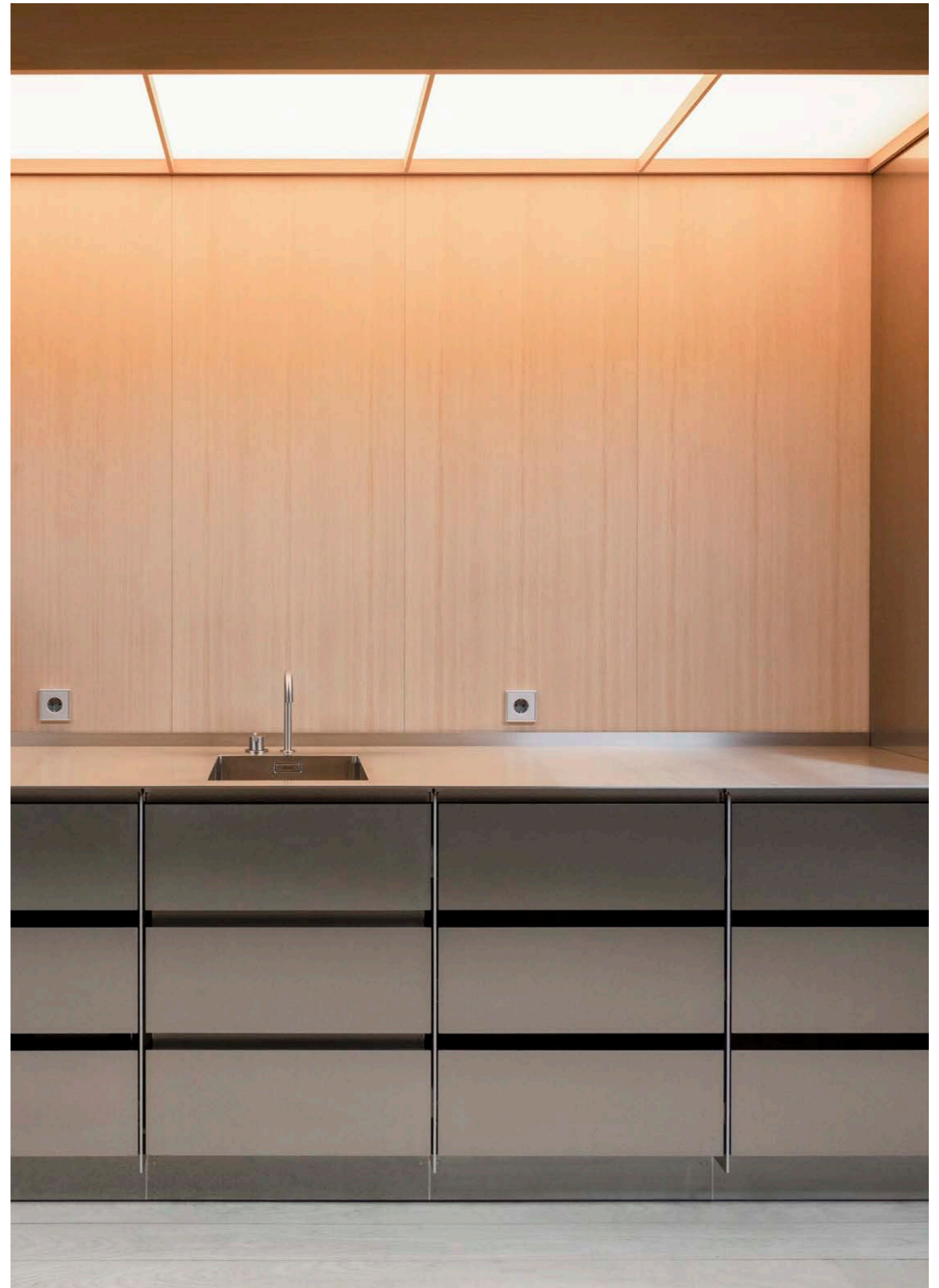
KITCHEN 11 _ NORSE PROJECTS

Nestled within a niche of one of Holmen's traditional boat sheds, this beverage kitchen quietly integrates into the calm and creative atmosphere of Norse Projects' headquarters.

Its cool, precise geometry ensures a functional and luxurious presence. Meanwhile, the light box's Oregon pine reflections cast a warm, inviting glow, softening the metal and creating a space. The result is a balanced contrast, structured yet welcoming, a serene introduction to the office.

PROJECT TYPE: Kitchen
CLIENT: Norse Projects
LOCATION: Copenhagen, DK
DATE: 2023
PHOTOGRAPHY: Archival Studies

Archival Studies



@archival_studies

archivalstudies.net





Archival Studies
@archival_studies
archivalstudies.net